

06

THE **Loft**

THE **Loft**

performance Windsurfing

The Loft is progressive design... pure dedication to windsurfing.

The Loft - established in 1999, although **The Loft** roots reach into 25+ years of professional rig development. Experience creates innovation, evolution...

Design quality is critical to maximize your windsurfing experience... windsurfing is performance sailing's the cutting edge; sailing's most efficient form.

Design quality is wind range expansion - optimized performance anywhere, all conditions. Wind range expansion is possible when we imitate nature effectively. Nature's wings have soft and stable profiles with light, flexible tips and are easily adapted to flight conditions.

The Loft develops designs with this natural spirit; designs inspired by, designed for, and confirmed in- wind on the water. Loft sails breathe, you can feel it!

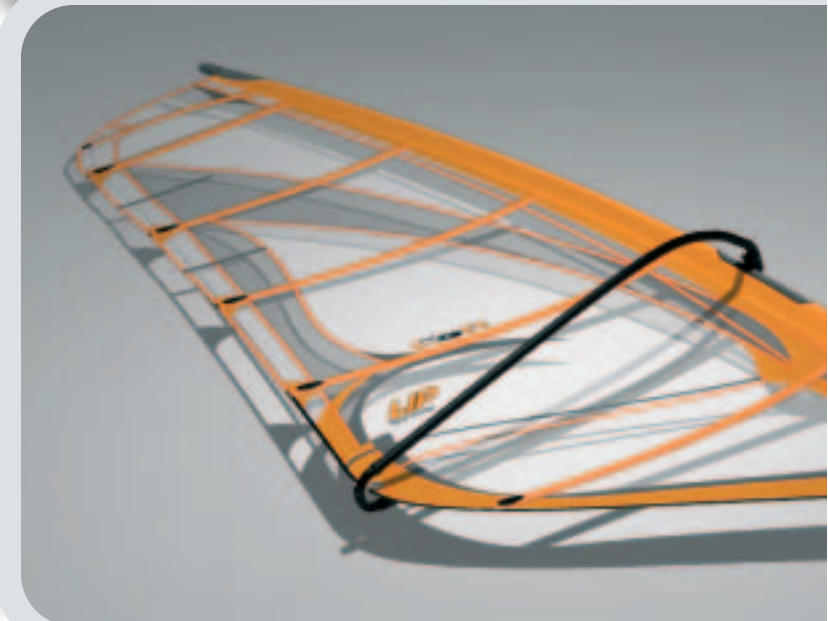
Loft sails progressive design quality is confirmed by windsurfing magazine tests worldwide...

The Loft is excitement felt as the wind rises... anticipation when trees scream with wind interaction... pulse acceleration as wind on the water comes into view...
see you there!



Monty Spindler

individual.
substantial.
experienced.





Fotos_Chimera Project



A brief Windsurfing Sail Design History

...I quickly generalize...

15+ years ago sailmakers were just discovering the advantages of free upper leeches. Free leeches provide excellent performance in stronger winds. At this time masts were not well controlled regarding stiffnesses and the flexes were generally hard-top which necessitated sail designs that induced free leeches (the cut-away!). 10 years ago the masts began to be better controlled and the designs began to work in harmony with the improved mast flexes. 5 years ago sail design improved to the point that they expanded effective wind range by being responsive to trim; not too full so that the upper end is good when the sail is trimmed flat, and full enough so that the low end is effective when the sail is trimmed soft (full).

Also the sail power center has been dropping lower as designs progressed so that the power generated is in a position to be better controlled by the windsurfer. Soft trim will raise the power center- which works in light winds, and hard trim will lower the power center- which works in strong winds.

Materials have also improved and allowed the latest rig design improvements to be realized, both for masts and sails.

Certainly this is a simplification of the involved and complicated historical progression, of course there is more to it, but in a few words...

GOOD WINDS!!!

Monty

LIP

Wave Concept

Waves... the ultimate challenge, forever changing. Waves create unlimited possibilities for expression.

The ideal rig must adapt to windsurfing conditions so you can maximize your expression. Few wave designs allow *both* onshore and sideshore performance optimization. The Lip Wave Concept delivers both in a friendly, indestructible package...

ultranova.pure.rip.rip

it is both power (outbound) and neutrality (inbound) you need to match the wave environment. The Lip Wave Concept is huge wind range with trim-reactivity designed in, so you can react.

Full Kevlar leech and foot panels, full xply body, pvc protected, large sized mast-foot bashpad, integrated construction, Sensitip equipped, no compromise...

pure... the Lip Wave Concept.

'TESTED!'

PLANCHEMAG FRANCE, '05 Wave test issue/Lip Wave Concept 5.2

"Its structure 100% X-Ply monofilm and its complete finishing details make it one, if not THE most robust of this group. This sail is very "top-of-the-range" ... "The Lip is very easy and neutral when surfing waves, and one has the possibility of accelerating when one wants."
"...presents an excellent quality/price ratio. Its qualities make this Loft Sail a frightening weapon in all the conditions, side or one shore. To discover urgently."

WIND FRANCE, '05 Wave test issue/Lip Wave Concept 5.2

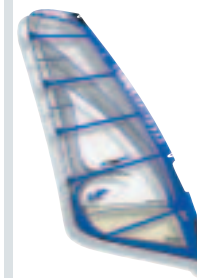
"The profile is perfectly defined, low, very harmonic and never broken in the distribution of shape from top to bottom." ... "The Lip is light weight, X-Ply proving that is possible to make light and resistant at the same time." ... "...light and balanced hand, followed by early planning all the while with great felt softness." ... "The body has a certain flexibility indeed and damps out the vibrations without harming the remarkable performances." ... "...always neutral in the arms and perfectly flexible in all situations!"

-Windsurf UK '05 Wave test issue, Lip Wave Concept 4.7

"...the Lip is a superb all-round contender, suiting all rider styles, with excellent control and supreme wind range..."

Sizes

5.7
5.2
5.0
4.7
4.3
3.9
3.5
3.1



loftsails.com



THE ft



LIP

Freewave Concept

Early planning power, upper end ease, the Lip Freewave ignites light wind wave fanatics and dedicated freestyle addicts.

Built with light materials in specific locations, the Lip Freewave has its emphasis on maneuverability.

The Lip Freewave is totally functional in panel layout: resistant exterior materials, lighter, viz-oriented materials interior.

Trim reactive to an extreme, the Lip Freewave is 4X4 power and exceptional ease of handling.

...express yourself. Lip Freewave Concept.

'TESTED!'

SURF GERMANY, '05 Freestyle test issue/Lip Freewave 6.2

"...the Lip Freewave has a very early planning quality."

"...the Lip Freewave has no leech fluttering and no nervous movements - no power-point wandering."

"... The Loft Lip Freewave Concept also feels soft and smooth in your hands when the wind comes up."

"Test Summary:

... most surfers use the same sail for waves and tricks in flatwater, then the Loft Lip Freewave Concept is the best choice."

The Lip Freewave has, in the sum, the best possible marks in the following categories:

- early planning quality
- freestyle quality
- freeride quality

Sizes

6.8

6.2



loftsails.com



THE  **LOFT**





ref-slam attack dynamite.

Freeride Concept

Slalom/freeride re-defined. The O2 Freeride is direct trim response with a crisp, light feel that is well suited to big sail freestyle.

The O2 Freeride Concept is FAST... the O2 Freeride scores **maximum** results for top end speed in all magazine tests to date.

The O2 Freeride is EASY... some say it's like having a smaller size in your hands.

Especially trim responsive, the O2 Freeride packs low-end grunt for your light wind windsurfing.

The O2 Freeride's designed-in forward shape orientation and 6 battens (including 4 Carbon tube battens) set the framework... trim the O2 firm and your high wind performance is easy, light, and stable.

The O2 Freeride Concept is designed for unlimited speed and range in a light, user-friendly package

oxygen for your windsurfing soul... the O2 Freeride Concept breathes.

'TESTED!'

WIND FRANCE, '05 Freeride test issue/O2 Freeride 6.6

"Concerning construction, in addition to the strongest proportion of monofilm X-ply, it is necessary to underline the excellence and the quality of the reinforcements at all the levels. Solid!"

"...one appreciates simultaneously the smoothness of piloting and the degree of acceleration."

"Loft Sails positions at the top or in second position in each one of our criteria of test, which shows the O2s high degree of versatility."

"...is forgotten completely in the arms thanks to total neutrality and an excellent work of the tip (this is its secret!). For the second consecutive year, the O2 brings a fresh air in this group by its pleasantness of control and its total freedom in the hands."

WINDSPORT NORTH AMERICA, '05 Freeride test issue/O2 Freeride 5.9

"The combination of easy planning, easy handling, range, stability, speed and maneuverability left the O2 with limited company."

"The O2 5.9 is one of those few sails you can trim for tweaked power or just hook in and go. Tuning does tons for that feeling and boosts the upper and lower wind range."

"The Loft again shows high-quality construction & refined finishing with a packed list of features and robust materials."

"...clean and effective power for any freerider."

Sizes

7.4

6.6


5.9

5.3



loftsails.com



THE  **ft**



O2

Freerace Concept

The O2 Freerace enjoys direct response to trim.

At minimum trim the O2 Freerace powers from head to foot and is alive with easy, breathing power.

Tug its adjustable outhaul, and the forward-oriented shaping works with its seven battens (five tubed) to maintain incredible Freerace upper-end.

At maximum trim the O2 Freerace body is slim

& stable with an open, harmonically twisting leech... top end speed easily comparable to full-on cammed racing sails.

The O2 Freerace Concept is planning power, handling ease and upper end stability with the broadest possible wind range, all in an easy to rig package... the progressive answer for light wind wind-surfing performance.

breathe it, race it. O2 Freerace Concept.

TESTED!

PLANCHEMAG FRANCE, '05 Freeride test issue, O2 Freerace 8.4

"The Loft O2 Freerace profits from a very beautiful mast protection with a Velcro opening to reach the triple pulley more easily. Beautiful work." ... "Upon contact with water, the O2 is a feather..." ... "...is very pleasant and powerful when pumping."

"...acceleration and a speed on the level with high-quality cammed sails... close to the performance of a full race sail downwind and halfwind- yet with light weight." ... "...is super stable and can handle strong gusts". ... "The Loft 8.4 is appropriate for light and medium weight windsurfers and intermediates who seek the the best power/lightness ratio." ... "In gusty winds, the head of the sail opens radically, which makes it possible to accelerate and release gusts without overpowering."

"...It is the heart-throb in this test for its extreme versatility."

WIND FRANCE, '05 Freeride test issue, O2 Freerace 8.4

"The design is very clean, perfect definition of profile." ... "One immediately appreciates the good reactivity of the sail, which is flexible and answers the smallest thrust of pumping." ... "Powerful with low winds and immediately very easy to settle in the wind, comfortable and powerful on the level of its accelerations from standing start, this 8.4 m2 shows an exceptional stability of profile in high winds." ... "Monty Spindler succeeded in offering control of great class in the gusts to this sail which is actually cut for light breezes: the sail shape does not move back and the top of the sail breathes perfectly." ... "Extraordinary sail for light wind, pure freeride with high performances on flat water and with a high wind range. Great ART, thanks a lot Mister Spindler!"

Sizes

10.8
9.6
8.4





THE ft



Concept 360

light no-fat.essential.new.

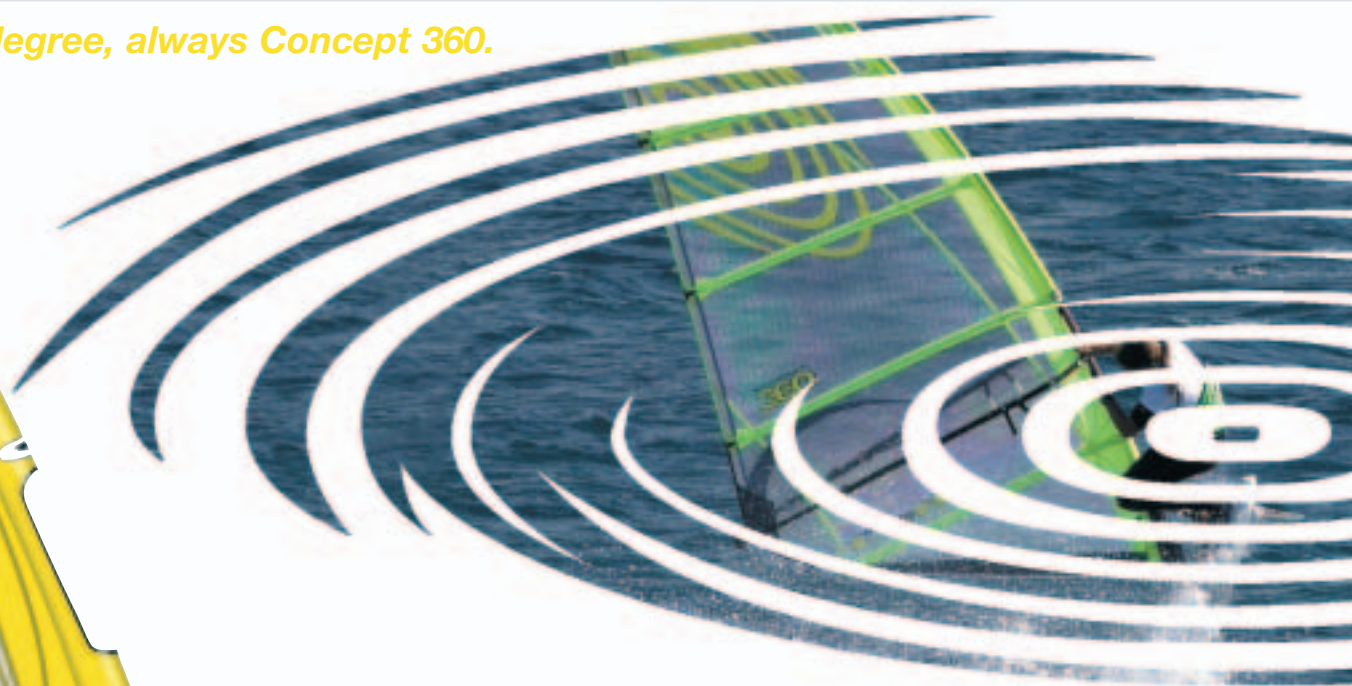
Concept 360 is The Loft's totally new design for 2006. The 360 is a sail designed to suit any windsurfer - beginner, intermediate, freestyler... even super-aggressive windsurfers delight in 360 performance.

Built light and right, the 360 sail body is cut entirely from tough grid Xply. The curves that spark the Concept 360 are based on the Lip Wave

Concept's proven designs - modified with slightly longer boom lengths, and shorter mast lengths.

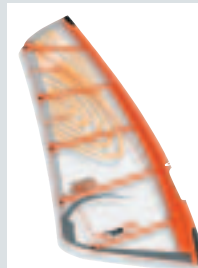
The lower 360 aspect-ratio expands light-wind performance and lowers rig swing weight... these design parameters- together with the 360s light weight- amplify any windsurfing experience.

...any degree, always Concept 360.



Sizes

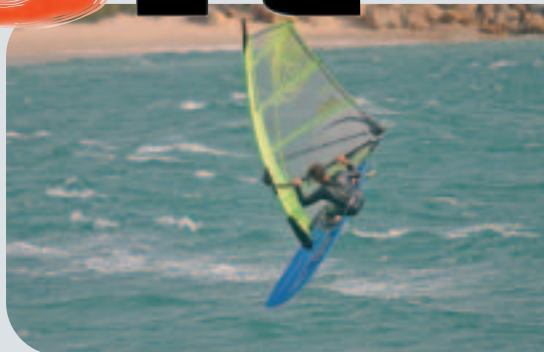
5.8
5.1
4.5
4.0
3.5



loftsails.com



THE  **ft**



Rider, board and rig become as one.

Progressive design elements can create performance greater than the sum of the parts... the rig becomes life like.

Response that you can feel, performance that comes alive... this is the core of The Loft.

It is a process that begins windsurfing... time on the water produces visions of what can be. Team/pairs testing with variables minimized is the only way to verify design quality... protos to series sails only after performance confirmation.

2006 Loftsails feature pronounced forward body-shape orientation, and high skin-tension. These elements work together to expand effective range... the rig becomes trim reactive: soft and elastic.

- Soft trim (reduced from the printed mast&boom lengths) will directly power-up the rig for light wind conditions - sail shape that powers from head to foot.

- Hard trim (setting the sail at the printed mast & boom lengths) will set the rig effectively for the mid-to-upper wind range - a slim body and easy handling... sail shape becomes flat, free, and easy. All Lip and O2 Concept sails include adjustable out-hauls as standard equipment... its in the bag!

The Sensitip

Stretch your feeling up and out at the tip! The Loft's Sensitip head batten system is the only tip system that is downhaul activated... downhaul tension flexes the Sensitip rod to produce The Loft's very individual feel.

The application of the Sensitip allows for an improved head planform with soft, stable and natural leech twist at the tip.

Construction

Panel Integration Concept- The Loft's exclusive functional and individual construction/graphic technique... real durability designed in.

The Lip and O2 share The Loft's fundamental construction technique- our Panel Integration Concept.

At the clew, tack and head, sail panels are overlapped; this simple technique creates integrated radial extensions into the sail body from the corners, which dramatically improves sail integrity with minimal weight.

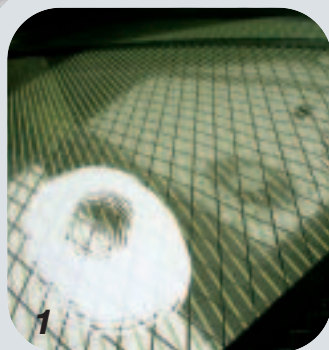
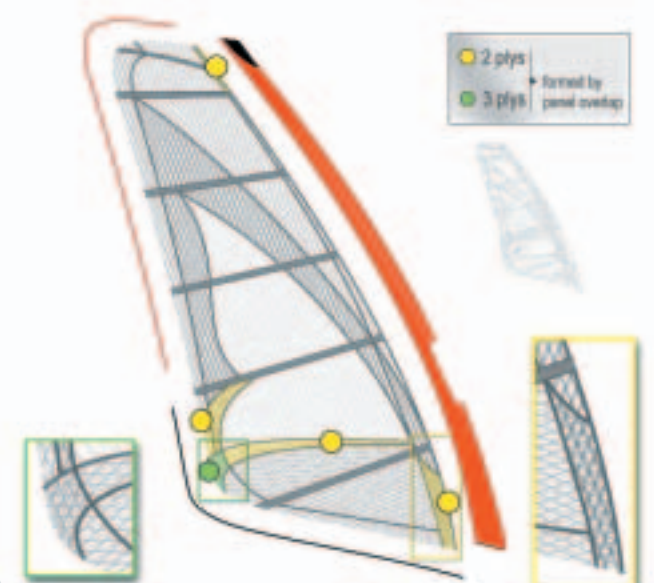
The clew is where one can most easily see our effective building technique. The four seams that extend into the sail body from the clew allow all three panels at the boom to extend under the eyelet and create a pair of radial 2plys into the sail body.

The Loft designs with functional grid X-ply exteriors and applies only first-quality sail making materials, from specialized mast pocket fabrics, multi-sectioned batten systems with specific precision-ground tapers, scrim

adhesive reinforcements to multiple-styles of bi-axial and multi-axial metal and Kevlar reinforced grid Xply laminates and extruded PVC thread and foot guards.

The Loft is a commitment to progressive windsurfing development... design and materials quality that you can feel.

Loft Panel Integration Concept



New finishing details 2006

LIP WAVE KEVLAR FOOT PANELS **1**

Both Lip Wave foot panels are cut from super-durable Kevlar-reinforced tri-axial xply material for 2006.

ROLL-UP SYSTEM **2**

A new integrated system to keep the 06 sails rolled.

TACK FINISHING & ASSEMBLY **3 & 5**

A durable vinyl extension has been added

between the mast pocket and the board deck, providing protection for the rider from the mastfoot/u-joint. Loftsails 06 are equipped with a stainless steel 3-roller integrated tack pulley, rigging handle and batten tensioner key mounted inside the tack finishing.

HEAD PROTECTOR **4**

The mast pocket top is protected with a new pvc molded cover with protected stitching and the Loft logo for 06.

LIP & O2 XPLY MAST PANEL **6**

New for 2006 is an Xply mast panel (which is dacron for 2005). The xply mast panel is more stretch-resistant than dacron, consequently the Lip sets slightly fuller due to the increased stretch resistance. The sail optics also are improved as the silver xply graphic extends down to the tack for 06.

THREAD GUARD **7**

Our new soft & light thread guard protects the upper foot 3ply seam from wear.

BATTEN END PROTECTOR **8**

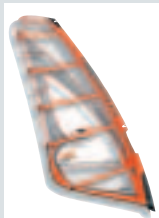
This small high-quality molded item is fixed at each batten end for 06.

Sails Specifications



LIP Wave

[Size]	[Luff]	[Boom]	[Recommended Mast]	[Compatible Masts RDM or SDM]	[Extension or Vario Top (-)]	[Battens + SensiTip]	[Micro Battens]	[Weight (kg)]
5.7	446	185	430/21 RDM	430, 460	16	5+1	2	3.83
5.2	425	177	400/19 RDM	400, 430	25	5+1	2	3.68
5.0	416	171	400/19 RDM	400, 430	16	5+1	2	3.61
4.7	404	167	400/19 RDM	370, 400, 430	4	5+1	2	3.50
4.3	387	158	370/17 RDM	370, 400	17	5+1	2	3.35
3.9	370	150	370/17 RDM	340, 370, 400	0	5+1	2	3.17
3.5	347	145	340/14 RDM	340, 370, 400	7	4	2	2.86
3.1	330	144	3450/14 RDM	340, 370, 400	-10	4	2	2.59



LIP Freewave

[Size]	[Luff]	[Boom]	[Recommended Mast]	[Compatible Masts RDM or SDM]	[Extension or Vario Top (-)]	[Battens + SensiTip]	[Micro Battens]	[Weight (kg)]
6.8	476	202	460/25 RDM	460	16	5+1	2	4.30
6.2	460	191	430/21 RDM	430, 460	30	5+1	2	4.10



Concept 360

[Size]	[Luff]	[Boom]	[Recommended Mast]	[Compatible Masts RDM or SDM]	[Extension or Vario Top (-)]	[Battens + SensiTip]	[Micro Battens]	[Weight (kg)]
5.8	435	195	430/21 RDM	460	5	5	2	3.61
5.1	412	186	400/19 RDM	430	12	5	2	3.40
4.5	372	174	370/17 RDM	400	2	4	2	2.87
4.0	354	160	340/14 RDM	370, 400	14	4	2	2.67
3.5	340	150	340/14 RDM	370, 400	0	3	2	2.35



O2 Freeride

[Size]	[Luff]	[Boom]	[Recommended Mast]	[Compatible Masts RDM or SDM]	[Extension or Vario Top (-)]	[Battens + SensiTip]	[Micro Battens]	[Weight (kg)]
7.4	488	216	460/25 RDM	460, 490	28	6+1	4	4.59
6.6	470	203	460/25 RDM	430, 460	10	6+1	4	4.36
5.9	446	190	430/21 RDM	430, 460	16	6+1	4	4.07
5.3	426	182	400/19 RDM	400, 430	26	6+1	4	3.96



O2 Freerace

[Size]	[Luff]	[Boom]	[Recommended Mast]	[Compatible Masts RDM or SDM]	[Extension or Vario Top (-)]	[Battens + SensiTip]	[Micro Battens]	[Weight (kg)]
10.8	562	267	550/38	520	12	7+1	5	5.98
9.6	532	245	520/34	490, 500	12	7+1	5	5.54
8.4	513	213	490/29	490, 500	23	7+1	5	5.18

- All measurements in centimeters.
- Mast & boom measurements are trim settings for high winds. Reduce for lighter winds.
- All the LIP sizes have Vario Tops except the LIP Freewave Concept 6.8.
- All the O2 sizes have Vario Tops except the O2 Freerace Concept 9.6 and 10.8.
- All sizes include the SensiTip head batten system except the LIP Wave Concept 3.5, 3.1 and all 360 sizes.
- RDM - reduced diameter mast
- SDM - standard diameter mast

Datas subject to change without notice!

THE LOFT



The Loft Carbon Booms... no compromise.

The Loft Carbon line booms are produced with first-quality 100% carbon pre-preg materials. All carbon head, tail and boom arms produce the stiffest boom possible. There is no better power transfer from your sail to you- direct response translates rig power to board speed and superior handling.

The Carbon line includes:

Neutral head:

- Specially designed head accepts any boom-height and/or clew position without loading the boom/sail. This new hinged-design eliminates clew pre-loading.
- The Neutral head design includes an integrated one-piece carbon head tube.
- The Neutral head accepts all mast diameters (rdm and ndm) with no need for an adapter.
- The closure lever is large and easy to operate for firm boom placement.
- Double-door head closure system for positive and easy mounting.
- Molded single-piece carbon foam-filled tail; elegant stiffness.
- Triple stainless steel rollers in the tail- adjustable outhaul compatibility.
- 2.5cm increments of adjustment with printed length references.
- Double-pin vario locking system.
- Harness line position print on the inside of boom arms.
- 60cm vario range.
- Optimized 31.0 boom arm diameter- easy and stiff.
- Soft EVA grip.
- Race Carbon boom includes a new wide tail- ideal for Formula racing.



booms & masts.

The Loft Alu Booms

The Loft Alu line shares the new Neutral boom head with the Carbon line although an alu tube is fitted. The Alu line is built with high-strength seamless T8 tubing.

The Alu line includes:

Neutral head:

- Specially designed head accepts any boom-height and/or clew position without loading the boom/sail. This new hinged-design eliminates clew pre-loading.
- The Neutral head design includes an integrated one-piece carbon head tube.
- The Neutral head accepts all mast diameters (rdm and ndm) with no need for an adapter.
- The closure lever is large and easy to operate for firm boom placement.
- Double-door head closure system for positive and easy mounting.
- Triple stainless steel rollers in the tail- adjustable outhaul compatibility.
- Foam-filled alu tail.
- 2.5cm increments of adjustment with printed length references.
- Single-pin vario locking system.
- Harness line position print on the inside of boom arms.
- 60cm vario range.
- Optimized 29mm boom arm diameter- easy and stiff.
- Soft EVA grip.

[Wave Carbon]	[Slalom Carbon]	[Race Carbon]	[Wave Alu]	[Slalom Alu]	[Race Alu]
145-205 cm	175-235 cm	240-300 cm	145-205 cm	175-235 cm	210-270 cm

The Loft Masts... total quality.

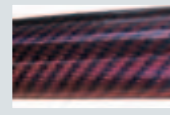
Performance on the water is directly influenced by the carbon content of your mast. Greater carbon content = optimum performance. Carbon turbo-charges your windsurfing experience. Performance you can feel...

All Loft Masts are 100% high-modulus carbon pre-preg:

- the fastest possible reflex-response,
- the lightest possible weight,
- the greatest possible rig stability... windsurfing unlimited.

Utilizing 100% high modulus carbon pre-preg, Loftmasts are built to last...

Loftmasts are carefully controlled in design and construction to have "constant-curve" flex character. All Loftmasts measure 64% bend at base (lower 1/4), 76% bend at tip (upper 1/4). The LoftMast range 2005 is quality and simplicity.



Advanced construction = Advanced performance

Autoclave processes

The LoftMasts are constructed using carbon fiber pre-pregs which are cured using temperature-specific autoclave processes. This process produces masts with the highest possible laminate qualities; no air entrapment for maximized mast integrity.

Carbon fibers layers

The LoftMasts include an inner spiral of carbon fibers for compression strength. Three layers of unidirectional carbon fibers run longitudinally (without crimp) for maximum compression strength. The LoftMasts production process allows for fine adjustment of the spacing and distribution of the carbon fibers in the three intermediate layers. Adjusting specific fiber-layups allow our mast flex-curves to be fine tuned and achieve perfect mast-sail compatibility.

Integrated-ferrule

The LoftMasts are produced with an integrated-ferrule at the top/bottom joint. This method eliminates the possibility of mast pre-bend... the mast flex-curve remains accurate and your windsurfing performance is absolutely optimal.

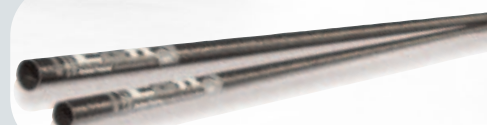
[Length cm]	[Carbon %]	[IMCS]	[Weight kg]	[Dedication]
-------------	------------	--------	-------------	--------------

RDM 340	100%	14	1.05	A super light hard-core reduced diameter mast. Recommended for The Loft Lip Wave & Freewave sails. Great with O2 Freeride sails.
RDM 370	100%	17	1.37	
RDM 400	100%	19	1.54	
RDM 430	100%	21	1.75	
RDM 460	100%	25	2.05	
RDM 490	100%	29	2.25	



[Length cm]	[Carbon %]	[IMCS]	[Weight kg]	[Dedication]
-------------	------------	--------	-------------	--------------

SDM 490	100%	29	1.74	SDM 490 100% 29 1.74 Recommended for O2 Freerace. A super light standard diameter mast with great racing ability.
SDM 520	100%	34	2.00	
SDM 550	100%	38	2.20	



kids sails & accessories.



Kids sails

The Loft produces two kids sails that let little rippers have their day. The Kiddo and the Spark are simple, light designs that make windsurfing easy for young beginners.

Spark 3.2 m2

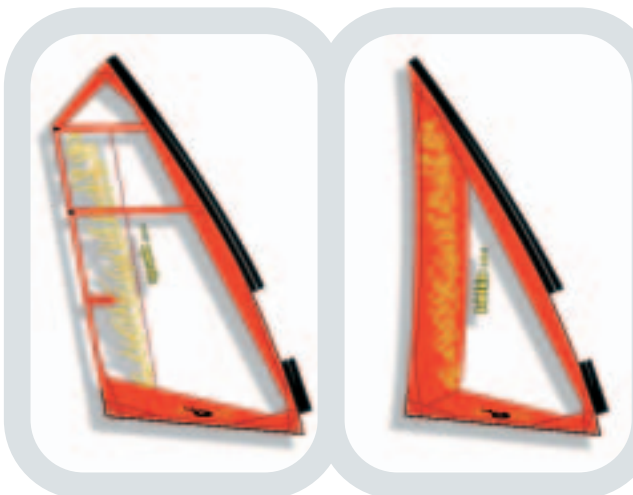
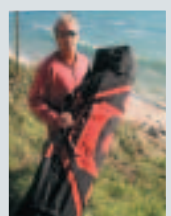
The Spark is a monofilm & dacron kids sail from The Loft. The Spark is very easy to rig! The Spark is equipped with two inflatable battens which are sewn directly onto the sail. The inflatable battens stabilize the Spark head at minimal weight. An additional effect is to prevent the Spark from being submerged, assisting beginning windsurfers and their enjoyment the wonderful sport of windsurfing.

A small air pump is included with the Spark, with just a few pumps the battens are fully inflated.

The Spark includes a two-ply foot, stainless vario top buckle, plastic top cap and soft PVC foot tabling.

Spark Specifications

Size: 3.2m2
Mast: 350-370 cm
Boom: 150 cm
Recommended Mast: 370 rdm/sdm
Compatible Masts: 350 alu rdm



Kiddo 2.5 m2

The Kiddo is a 2.5m2 kids sail from The Loft. Its hot! The Kiddo is super easy to rig! The Kiddo is cut from 3.75gm/m2 dacron and the large window is soft, durable PVC.

The mast pocket is made of durable PVC mesh material which will not collect water making uphauling easy.

The Kiddo rigs on 350cm/38mm o.d.alu masts as well as on 370cm RDM wave masts.

The Kiddo includes a two-ply foot, stainless vario top buckle, plastic top cap and soft PVC foot tabling.

Kiddo Specifications

Size: 2.5m2
Mast: 350-370 cm
Boom: 150 cm
Recommended Mast: 370 rdm/sdm
Compatible Mast: 350 alu rdm
Weight: 1.19kg



Quiver bags

The Loft produces three professional quiverbag sizes, built with simplicity and longevity in mind.

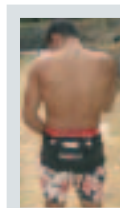
[Model]	[Length]	[With extension]	[Compatible sail/mast length]
Wave	175 cm	200 cm	sails up to 200 cm boom, 2pc masts up to 360
Slalom	205 cm	230 cm	sails up to 230 cm boom, 2pc masts up to 520
Formula	270 cm	300 cm	sails up to 300 cm boom, 2pc masts up to 580

Quiverbags features:

- Special load distribution strap reinforcements at critical points.
- Up to 6 sails capacity & extensions to accept longer boom lengths.
- Separate extensions to allow masts to be placed into the bags.
- All zips oversized and all seams doubled & a zipped side pouch.

Olympic competition harness

The Olympic Windsurfing competition was dominated by The Loft harness.



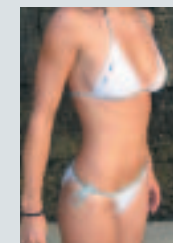
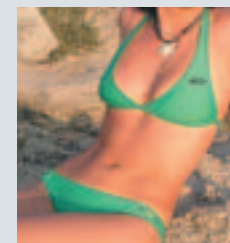
Gal Friedman of Israel won Gold with The Loft harness. Silver medal winner Nicos Kaklamanakis used The Loft as his high-wind harness... of the 36 male competitors at the games 15 were racing equipped with the Olympic racing harness from The Loft.

In the womans fleet 9 of the top 20 of the competitors raced for gold with The Loft competition harness.

Monty continues to work with spanish Mistral Champion Curro Manchon in the development of The Loft Olympic harness. There is only one choice if you are going

for gold.... The Loft Olympic competition harness. See it all over the Olympic race course, get it from The Loft.

Bikini & Lycra



Bags & more

BACK PACK



EQUIPMENT BAG



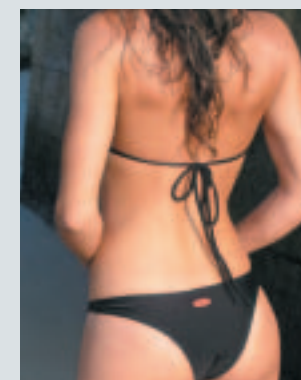
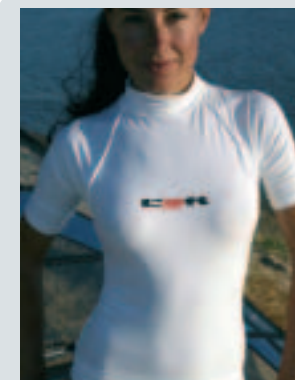
HARNESS LINES



FOOT STRAP



VOLCANO PAD





Ron Barel

Born in Israel, lives at Pozo, Gran Canaries.

"I am fixing boards for a living, when there is no wind I love to surf and enjoy life."



Royn Bartholdi

Royn lives in the Gorge in the summer and Maui in the winter; As a professional board tester.

"I enjoy wave sailing for the pure aesthetics and freestyle sailing for the competitions and technical challenges."

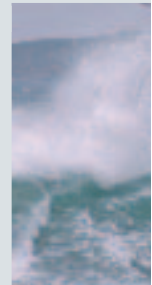
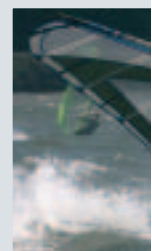
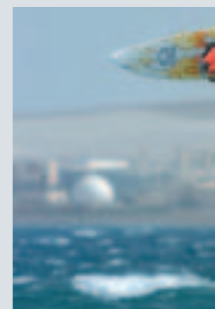
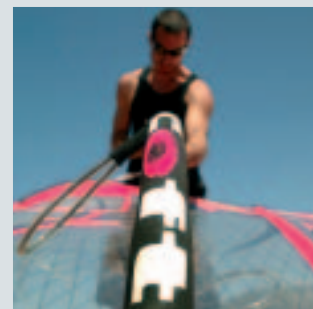
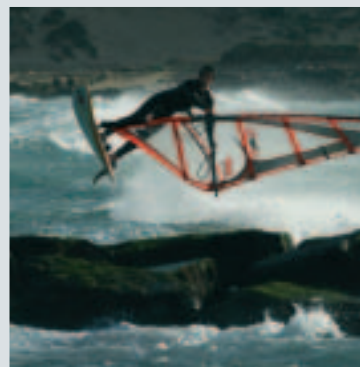
Winner Gorge Games Masters '02 & '04.

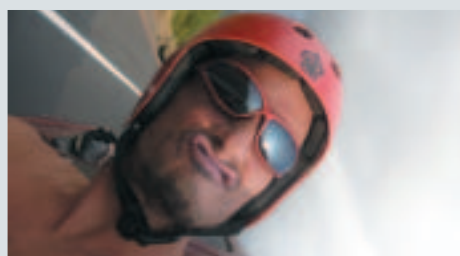


Daniel Bohnhof

Born in Germany, lives at Pozo, Gran Canaries.

"Don't be afraid of the next step, be afraid of standing still."





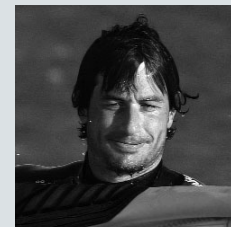
Fotos_Chimera Project (5) at Playa Chica/Tarifa, henningvoges.de (8) at Bolonia & Playa Chica/Tarifa, www.jamiescottimages (2) in Australia, Jon Malmberg (4) at the Gorge/USA, Monty Spindler (3) Maui



Pierre Gloaguen

Born in Plougoulm, Brittany, lives in Tarifa.

"I like to travel to the best locations in the world and produce radical photos. Since 2002 I live permanently in Tarifa. My job: professional windsurfing instructor."



Ludo "Joss" Jossin

Born in France, lives in Estepona/Spain.

"I travelled around Europe making my home near Tarifa. Since 3 years I develop with Monty the new Loft sails."



Henning Voges

Born in Hamburg, Germany, lives in Tarifa.

"The Lip is a perfect balanced Wave sail, light and heavy built construction. I want a smooth, soft handling sail with enough power, now I have what I am looking for."

AUSTRALIA • Windsurfing Sales

1 Dorothy Friend Place
Bundanoon, NSW, 2578

sales@windsuringsales.com.au
www.windsuringsales.com.au

BELGIUM • Windsurfshop.be

Chaussée d'Alseberg 848
B-1180 Brussels

tel. ++32 475 582913
fax ++32 2 3758228
info@windsurfshop.be
www.windsurfshop.be

BRASIL • Sergey Frantov

Servidao Papaterra 900
Florianopolis Santa Catarina
88060-410
tel. 55 48 269 8226
sergeyfrantov@yahoo.com.br

CZECH REPUBLIC • Filip Myska

Zdim_ická 1437/29
Praha 4 Chodov
14900 Czech Republic
tel. ++420 604 792 380
filip.myska@loftsails.cz
www.loftsails.cz

ENGLAND • The Surf Store

Bishopton Lake, Bishopton, Stockton,
Cleveland UK TS211EY
tel. ++44 1740 631199
fax ++44 1740 631057
sales@surfstore.co.uk
www.surfstore.co.uk

FRANCE • Marchand Michel

Agence Multiglisce
Centfontaines
74360 Bonnevaux
tel. ++33 06 71 63 93 65
fax ++33 04 50 73 00 87
mm74@libertysurf.fr

GERMANY • WSM Funsport

Prinzessinweg 43
26122 Oldenburg
tel. ++49 0441/ 560 11 32
fax ++49 0441/ 21779327
wsmfunsport@aol.com
www.wsmfunsport.de

GREECE • Seditious Wind

2, Esperidwn Str.
Athens 11146
tel ++30 210 2914 150/ 697 8358 982
gbt@aueb.gr

IRELAND • Marble Hill Windsurfing

The Cottage Marble Hill
Dunfanaghy Co Donegal
tel. ++353 74 36231
richardharshaw@eircom.net

IRELAND • Surf Dock

Grand Canal Dockyard
South Dock Road Ringsend
Dublin 4
tel. ++353 1 6683945
shop@surfdock.ie
www.surfdock.ie

ISRAEL • Camel Surfing

Shikon B7
Tiberias
tel. ++972-52-2811193
camelsurfing@hotmail.co.il

ITALY • Windsurf Center & Loftsails Test Center

KIAORANA
Lago di Bilancino
Florence
tel. ++39 3473541068
loftsails@kiaorana.info

ITALY • Ellepi New Team

20097 S. Donato
Mil.se (MI)
tel. ++39 3296512964
teamsail@fastwebnet.it

LATVIA • Surf Pro

Maza Nometnu iela 3-81 Riga
Latvia, LV1002
tel. ++3719339936
info@surfpro.lv
www.surfpro.lv

NEW CALEDONIA • SP8CE New Caledonia

windsurf kitesurf surf
Laurent Gaüzere
BP 1918 98846 Noumea Cedex
tel. (687) 788667
fax (687) 284840
sp8cenewcaledonia@yahoo.fr

NEW ZEALAND • Windsurfing South Pacific

77 Barry's Point Rd Takapuna Auckland
Ph: 649 486 7739
Fax: 649 486 7740
Email: phil@windsurfing.co.nz
www.windsurfing.co.nz

loftsails.com

POLAND • EASY-windsurfing

ul. Mogile_ska 4
61-052 Pozna
tel./fax ++48 61 653 31 92
mobile ++48 501 149 412
easy@easy-windsurfing.pl
www.easy-windsurfing.pl
www.loftsails.pl

PORTUGAL • Nuno

Filipe Esteves
Rua Frederico Lecor
Lote 17-3ºE
8000 Faro
++351917249493
nuno@stecurbis.mail.pt

RUSSIA • Sporttorg Company

Ulitza Timura Frunze 16
str.3 office Sk-3
119 021 Moscow
tel./fax ++7 095 246 01 28
sporttorg@starnet.ru

SLOVENIA • PROSURF

Peter Silec s.p.
Kosova Ulica 10
2000 Maribor
tel. ++386 41 840 830
peter.silec@siol.net
www.prosurf-sp.si

SPAIN • The Loft Headoffice

No. 7, Betis
11380 Tarifa Cádiz
tel. ++34 956 688 587
info@loftsails.com
www.loftsails.com

Canary Islands

Christian Nordlohn
C/Fula 99
35118 Arinaga Gran Canaria
tel. ++34 676448078
cn@experia.de

Sailboards Tarifa

Calle San Sebastian no20
11380 Tarifa Cadiz
tel. ++34 956 681188
st@sailboardstarifa.com

Surf 3 S.L

Fdez. de los Ríos 8
28015 Madrid
tel. ++34 91 447 12 82
dtertre@surf3madrid.com

SWEDEN • Eddies Surfshop

Volontarsgatan 13 a
254 55 Helsingborg
edvard_zembron@hotmail.com
tel. ++46 42 24 26 38
fax ++46 708 180 306

USA • California

BoardSports:
446 W. Francisco Blvd.
San Rafael Ca 94901
tel. ++1 800 262 7379 (boards-9)
info@boardsports.com
www.boardsports.com

USA • Gorge

Gorge Surf Shop:
13 Oak Street Hood River
Oregon 97031
tel. ++1 800 957 4978
info@gorgesurfshop.com
www.gorgesurfshop.com

USA • Midwest

The House
300 So. Owasso Blvd.
St. Paul Mn 55117
Toll Free ++1 800 992 7245
tel. ++1 651 482 9995
fax ++1 651 482 1353
info@thehouse1.com
www.the-house.com

UKRAINE • Board Club

Culture st.23 ap.1
610058 Kharkov
tel. ++380 57 757 62 55
mobile ++380 67 576 72 81
vadim@board-club.com
www.board-club.com.ua

Riders • Ron Barel, Daniel Bohnhof, Royn Bartholdi,
Pascal Bronnimann, Roland de Ryker, Pierre Gloaguen, Ludo Jossin,
Christine Lichtmannegger, Monty Spindler, Henning Voges
Pix • Chimera Project, Bartek Gryesiek, Jon Malmberg, Monty Spindler,
henningvoges.de, www.jamiescottimages.com, Darrell Wong
Catalogue design • Henning Voges/www.oceanriders-media.com