



SIMMER & STYLE

2009



Before you rig one of our sails, masts, tighten one of our booms or slip into one of our harnesses rest assured that we have dragged numerous prototypes and versions of every single one of them, several times around the world to have the worlds' best windsurfers test them in every imaginable condition, just to make sure that quality, performance and reliability are in fact not just something we say. They are fact.

Why? Because until we're satisfied we won't stop asking ourselves "how can we improve this and how can we make this even better?" Because whether it's 1981 and we're a local Maui brand making sails in a tiny shack on the islands North Shore, or it's 2009 and we're represented all over the world, our goal has always been, and will always be, to make the best windsurfing gear in the world, no matter how big or small we might be.

Simmer Style today is run by a tight crew of dedicated windsurfers who along with their young and dynamic team (including some of todays most radical, innovative and creative wave, freestyle and race sailors) make up the foundation of Simmer Style, where our common goal is to keep the Simmer Style legacy alive by designing and building the best windsurfing gear in the world.

After 28 years as the leading brand at the windsurfing world hotspot Ho'okipa it's safe to say that when it comes to quality, performance and design Simmer Style is truly unique, a bit like our 2009 Team headed by none other than legendary Kai "Flycatcher" Katchadourian (US-33) whom has been representing Simmer Style through thick and thin for the past 20 years. With all that said, we at Simmer are proud to introduce to you our 2009 collection.

Aloha!

Tomas Persson – Chief Designer, Simmer Style

STRETCH CONTROL SYSTEM

MORE POWER - MORE CONTROL

First introduced by Simmer in 2003, the Kevlar Stretch Control System has become a fundamental part of all current Simmer sail designs. The innovative concept for the Stretch Control System is to control the progressive twist, keeping a stable sail profile even when heavily over-powered, keeping you in control with full power. Kevlar stretches just a fraction of the amount of any laminated films or scrim; eliminating cloth stretch and unwanted sail distortion. These features combined makes the Simmer Style Stretch Control System as industry leading concept.

DESIGN OBJECTIVES

- Enables deeper sail profile in lower sail body, creating more controlled power.
- Controls the progressive twist.
- Minimizes sail profile distortion.
- Increases sails durability.

MINIMIZES SAIL PROFILE DISTORTION

CONTROLS THE PROGRESSIVE TWIST

INCREASES SAILS DURABILITY

CLEW TO BATTEN #2 KEVLAR TENDON

CLEW TO BATTEN #3 KEVLAR TENDON

SLEEVE TOP KEVLAR TENDON

MINIMIZES SAIL PROFILE DISTORTION
FRONT EDGE KEVLAR TENDON

ENABLES DEEPER SAIL PROFILE IN LOWER SAIL BODY, CREATING MORE CONTROLLED POWER

TECH DATA

SIZE	BOOM	LUFF	MAST	TOP
2.7	125	310	340/15	adjustable
3.0	131	324	340/15	adjustable
3.3	134	344	340/15	adjustable
3.7	140	374	370/17	adjustable
4.0	145	388	370/17	adjustable
4.2	150	394	370/17	adjustable
4.5	154	407	400/19	fixed
4.7	158	416	400/19	fixed
5.0	164	423	400/19	fixed
5.3	171	432	400/19	fixed
5.6	178	441	430/21	fixed
6.1	185	456	430/21	fixed

RECOMMENDED MAST: **RDM 9**SECOND RECOMMENDED MAST: **RDM 6 or SC-6**

MISSION

Mission – Our Ho'okipa Heritage Wave Design

The Simmer Style heritage runs deep in this wave sail, this is the modern day version of the same sail that dedicated wavesailors and Simmer Style founders Klaus and Malte Simmer used to tear up Ho'okipa Beach Park with back in the day. We've constantly refined this sail over the years to make it the best wave sail around whether it was 1981 with tie-on booms at Ho'okipa or its 2009 with carbon masts and twin fins.

Characteristics

Mission is a manoeuvre oriented wave sail. It has a direct and responsive feel combined with a lower twist for quick de-powering during critical manoeuvre moments. Designed for the hardcore wavesailing specialist.

- Monofilm construction with Kevlar reinforcements in key areas of wear
- Superb handling qualities and on demand maneuverability
- Crystal clear visibility

"Our riders here at Simmer stop at nothing and neither will our designer, Tomas Persson. New for 2009 is the Mission and Mission X wave sail. This is the sail of choice for the dedicated wavesailor, our riders at Hookipa took immediately to this blend of power and handling. Go ahead and hit the lip as late as possible, hit all your jumps with full control, and if you happen to end up swimming for your rig, have the confidence that it will be intact and ready for more. Mission Accomplished!" Kai "Flycatcher" Katchadourian (US-33)

TECH DATA

SIZE	BOOM	LUFF	MAST	TOP
2.7	125	310	340/15	adjustable
3.0	131	324	340/15	adjustable
3.3	134	344	340/15	adjustable
3.7	140	374	370/17	adjustable
4.0	145	388	370/17	adjustable
4.2	150	394	370/17	adjustable
4.5	154	407	400/19	fixed
4.7	158	416	400/19	fixed
5.0	164	423	400/19	fixed
5.3	171	432	400/19	fixed
5.6	178	441	430/21	fixed
6.1	185	456	430/21	fixed

RECOMMENDED MAST: RDM 9

SECOND RECOMMENDED MAST: RDM 6 or SC-6



MISSION X

Mission X – Our Ho'okipa Heritage goes X

Way back in the day when Klaus and Malte were busy shredding Ho'okipa Beach Park, the materials we have today were simply not available, so for these guys sailing on the edge of what's considered sane, x-ply would have been a blessing. If you are the type of sailor that has a good tumble every now and then, or you have a sailing area that consists of reef and rocks and other not so sail friendly features, you're covered with Mission X. It's full x-ply body and PVC window provide the last line of defense against harsh environments. It's the ultimate wave sail for the ultimate wavesailor.

Characteristics

Mission X is based on the same construction as Mission but has a full x-ply body and a clear PVC window to endure severe beatings.

- *This is the sail that will make it thru anything you can survive, perhaps even beyond that!!*
- *Same cut as Mission, with the extra toughness of full X-Ply construction*
- *Bulletproof PVC Window*
- *Performance and handling, with the toughest materials available*

"This year's Icon has the power concentrated in the front, which drives my new twinisers through the bottom turn and gives me speed of the top to go into radical maneuvers, so whether it's back home in Almeria, at Punta Preta or Guincho my sail always maintain power and control. This sail just blows my mind"

2007
2008

Vice World Wave Champ **Victor Fernandez** (E-42)



Icon – World Wide Wave

Do you want to stun your audience and competitors at the same time? Victor Fernandez does it all the time. Why? It's because his Icons can handle anything; sideshore, onshore, gusty, overpowered, choppy, you name it! With Icon's powerful profile and full x-ply body, the capacity to adapt to any conditions means you are going to be ready for anything when you hit the water.

Our most popular sail.

Characteristics

Icon is a powerful all-round wave sail built to handle and withstand whatever conditions the world has to offer. Our most popular sail for a reason, Icon is the adaptable design that serves the traveling sailor the versatility to go anywhere anytime with confidence.

- Full X-Ply body
- Powerful profile for global versatility and adaptability
- Reduced head surface for progressive twist control and lower center of effort which helps release airflow from the sail during critical moments like landing backloops or during wave maneuvers

ICON 2009


TECH DATA

SIZE	BOOM	LUFF	MAST	TOP
3.4	137	355	340/15	adjustable
3.7	141	374	370/17	adjustable
4.0	146	385	370/17	adjustable
4.2	151	393	370/17	adjustable
4.5	156	403	400/19	fixed
4.7	159	413	400/19	fixed
5.0	167	421	400/19	fixed
5.3	172	429	400/19	fixed
5.6	180	440	430/21	fixed
5.9	182	451	430/21	fixed
6.2	188	458	430/21	fixed

RECOMMENDED MAST: **RDM 9**

SECOND RECOMMENDED MAST: **RDM 6 or SC-6**





"The team found in testing that you can do it all with Iron. Cross-onshore to side-shore ripping, freestyle, and powered up sailing alike. Its has a very wide range of tunability and the ability to thrive in average - type environments. Its the most powerful wave sail in the Simmer Style range."

Kai "Flycatcher" Katchadourian (US-33)

Iron – Hybrid Power Sail

Also new for 2009 is Iron. Iron is our most powerful sail built for those who enjoy sailing juiced up, or for the heavier sailor who needs the extra horsepower to get going and stay going. Iron will jump higher, ride longer and power you through all the lulls with ease. Its power profile makes it the sail of choice for real- world environments where the fundamental thing is being up and moving at all times.

Characteristics

Iron is our most powerful sail built for a rider who's looking for extra power and or for heavier riders. Each sail has a direct and powerful feel with a progressive twist and an extensive wind range.

- *Top end power design for multiple environments*
- *Low end power, high end control*
- *Progressive twist*

TECH DATA

SIZE	BOOM	LUFF	MAST	TOP
3.7	144	371	370/17	adjustable
4.0	147	384	370/17	adjustable
4.2	153	391	370/17	adjustable
4.5	156	401	400/19	fixed
4.7	161	414	400/19	adjustable
5.0	168	426	400/19	adjustable
5.3	175	426	400/19	fixed
5.7	183	439	430/21	fixed
6.2	189	455	430/21	fixed
6.7	195	471	460	fixed

RECOMMENDED MAST: **RDM 9**

SECOND RECOMMENDED MAST: **RDM 6 or SC-6**

"For me a light feel is everything on a freestyle sail, the new XD's are featherlight and makes the sail very easy to handle when you're pulling tricks, letting you worry about your style instead of your sail. Now that's what freestyle is all about for me, style..." Andreas Olandersson S-66

TECH DATA

SIZE	BOOM	LUFF	MAST	TOP
5,1	166	431	430/21	fixed
5,4	171	441	430/21	fixed
5,7	177	450	430/21	fixed
6,0	183	459	430/21	fixed
6,4	187	479	460/25	fixed
6,8	189	488	460/25	fixed

RECOMMENDED MAST: **RDM 9**

SECOND RECOMMENDED MAST: **RDM 6 or SC-6**

XD – Style matters... Do it with style!

For us here at Simmer Style it's all about doing it with style. Now the XD comes with such a featherlight feel and sense of control to it, that the only thing you have to worry about is your style... perhaps not even that!

Characteristics

- *Light weight construction and larger sizes from 5.1 - 6.8*
- *Lateral pressure point for central rotation*
- *Finger tip handling*

SIMMER INTERNATIONAL TEAM

**KAI KATCHADOURIAN / VICTOR FERNANDEZ / CHEO DIAZ
JONAS CEBALLOS / RUDY CASTORINA / YANN SORLUT
FRANCISCO PORCELLA / BEN PROFFITT / EDVAN SOUZA
NIKLAS STRÄLHEN / ANDREAS OLANDERSSON / SYLVAIN
MOUSSILMANI / BENOIT MOUSSILMANI / JUNKO NAGOSHI
BEN VAN DER STEEN / NAT GILL / FREDERICK STEINECK /
WHIT POOR / PATRICE BELBEOCH**

Our talented team of international and national riders has been circling the globe testing, competing and representing all that Simmer Style has come to symbolize. Each member of our team provides us with invaluable equipment analysis, shining event results and inspiring travel stories. Our riders also serve as our Simmer Style ambassadors to the world. The Simmer Style organization feels honored to be working with such an interesting, inspiring and motivating group of people.

Brand manager and head sail designer Tomas Persson has hand-picked the world's most promising sailors to be part of the Simmer family.

"This year we have put together a group of young and dynamic riders. Together with our more experienced sailors we have an unlimited source, knowledge and understanding of modern windsurfing. We have some new faces on board and there is a really good atmosphere on the team. We are looking forward to an exciting year."
Tomas Persson.

Team captain is none other than legendary rider Kai "Flycatcher" Katchadourian (US-33) who's been a part of the Simmer Style team for the past 20 years.



TECH DATA

SIZE	BOOM	LUFF	MAST	TOP
4,5	159	388	370/17	adjustable
5,0	168	412	400/21	adjustable
5,5	176	431	430/21	adjustable
6,0	180	447	430/21	adjustable
6,5	192	462	460/25	Fixed
7,0	202	478	460/25	Fixed
7,5	218	487	460/25	Fixed
8,0	225	500	460/25	Fixed

RECOMMENDED MAST: SC-3

SECOND RECOMMENDED MAST: SC-6

SPARK

Spark – Ignite your freeriding

Want take your freeriding to the next level on a shoestring budget? Spark will bring out the best in your sailing and still leave your wallet flush. Why? First of all it's got a wide sweet spot which means the sail will work even if it's not perfectly rigged, and that, along with its lightweight construction and manoeuvrability will let you focus on your sailing instead of worrying about your sail. Spark comes at a great price so... Spend less and ride more!!

Characteristics

Spark is a user friendly freeride sail for the intermediate windsurfer who is looking for an affordable sail to boost their freeriding capability / ability?

- *Wide sweet spot, works well even if not perfectly tuned*
- *Early planing*
- *Easy handling*



TECH DATA

SIZE	BOOM	LUFF	MAST	TOP
4,8	165	414	430/21	adjustable
5,4	182	430	430/21	adjustable
6,0	194	447	430/21	adjustable
6,6	206	456	430/21	fixed
7,2	211	478	430/21	fixed

RECOMMENDED MAST: SC-8

SECOND RECOMMENDED MAST: SC-6

ADDICT

Addict – One, Hassle Free, Windsurf Fix

One mast and boom for one sail size, then another mast and boom for another size, and so on. Addict - a simple solution. Yes we all know windsurfing in the 80's and 90's could be a hassle, but today is a totally different story. Windsurfing can be as easy and enjoyable as you want and you should look no further than our new Addict sail. Its been designed to deliver ultimate performance on the same mast, boom and extension for all sizes from 4,8 up to 7,2. The idea is common sense brought to life; maximum performance on minimum amount of gear. So go get hooked again because this is one fast, hassle free, windsurf fix (that won't fill up your car.).

Characteristics

Addict is a user friendly high performance freeride sail for the windsurfer who is looking to score as many windsurfing days as possible, on the least amount of gear.

- *One mast, one boom and one extension for all sizes*
- *Early Planing*
- *Easy handling*



XTYPE/VTYPE

X Type – Push your limits

When it's all about speed, handling and extreme durability the X Type might just be the answer to your prayers. This full X-Ply, camber free, high performance freeride sail will let you take chances and push yourself to your very utmost limits, yet will remain intact should you go down hard trying.

Characteristics

X Type is an extremely durable, high performance freeride sail for the more experienced windsurfer who is looking for a camber free top end freeride sail.

V Type – Blast away!!

The V Type is the ultralight version of the X Type. This monofilm, camber free, high performance freeride sail offers full visibility combined with speed, easy handling and durability. The V Type will let you go as fast as you can go, whilst retaining a featherlight feel, even if it's powered up and you are white-knuckle quivering!

Characteristics

V Type is a ultralight and durable high performance freeride sail, for the more experienced windsurfer who is looking for a camber free top of the range freeride sail.

- Camber free stable sail profile
- Ultralight and durable construction
- Suits widestyle boards
 - Size 4.9-6.4 More Freeride orientated
 - Size 6.9-9.0 More Race orientated

TECH DATA

SIZE	BOOM	LUFF	MAST	TOP
4.9	163	418	400/19	adjustable
5.4	174	437	430/21	adjustable
5.9	183	450	430/21	adjustable
6.4	189	466	460/25	Fixed
6.9	199	485	460/25	Fixed
7 BATTEN X TYPE AND V TYPE				
7.5	219	487	460/25	fixed
8.2	226	507	490/29	fixed
9.0	239	526	490/29	fixed

V TYPE IS ONLY AVAILABLE IN 6.9, 7.5, 8.2, 9.0

RECOMMENDED MAST: SC-8

SECOND RECOMMENDED MAST: SC-6

TECH DATA

SIZE	BOOM	LUFF	MAST	TOP
5,5	175	430	430/21	adjustable
6,0	185	449	430/21	adjustable
6,5	192	462	460/25	fixed
7,1	207	477	460/25	fixed
7,8	220	487	460/25	fixed
8,5	228	503	490/29	fixed

RECOMMENDED MAST: SC-10

SECOND RECOMMENDED MAST: SC-8

2XC

2XC – Double Cam Dragster

Cambers used to be a touchy subject but luckily that's all ancient history now, the 2XC is solid proof that a double cambered dragracer is one smooth sail that rigs easy, rides fast and maintains control at all times - even in the most tricky conditions. So now you have no excuse, full throttle it is!!

Characteristics

2XC is a high performance freerace sail for the more experienced windsurfer who is looking for that extra power and stability that a camber sail offers.

- 2 Cambers
- Smooth Rigging
- Maintains power and control at all times



3XC

3XC – Triple Cam Powerhouse

Speedfreaks and daredevils alike, come get a piece of the action with the brand new 3XC. This triple cambered powerhouse rigs smoothly, keeps the low center of effort in place at all times, and delivers as long as you keep pushing it. This sail will just go faster and faster, even in the most demanding conditions. So if you got what it takes, go ahead and blaze through the soundbarrier in full control, as this is as close as you'll ever get to a full-on race sail without breaking into a sweat when signing the credit card slip. Get the most knots out of your dollar!

Characteristics

3XC is a high performance freerace sail for the more experienced windsurfer who is looking for a full blown cambered powerhouse at an affordable price.

- 3 Cambers
- Smooth Rigging
- Maintains power and control at all times

TECH DATA

SIZE	BOOM	LUFF	MAST	TOP
7,0	203	470	460/25	fixed
7,5	216	483	460/25	fixed
8,0	221	496	490/29	fixed
8,5	231	498	490/29	fixed
9,0	238	519	490/29	fixed
9,5	246	530	520/34	fixed

RECOMMENDED MAST: SC-10

SECOND RECOMMENDED MAST: SC-8

2009



90% CARBON
WAVE/FREESTYLE/FREERIDE



55% CARBON
WAVE/FREESTYLE/FREERIDE



100% CARBON
COMPETITION SLALOM



100% CARBON
RACE



75% CARBON
FREERIDE/FREERACE/FREESTYLE



55% CARBON
WAVE/FREESTYLE/FREERIDE



30% CARBON
ALL-ROUND

RDM9

Our 90% Carbon Prepreg constructed RDM. Not only for the radical! This mast will improve the handling of wave sails for everyone. Every rider will appreciate the easier rigging, more comfortable handling, and light "bladey" feeling that the RDM9 gives their rig. Includes standard diameter boom adapter.

RDM6

Our 60% Carbon RDM. For those who demand excellence in both durability and performance with reasonable price-point, RDM6 has great compatibility with all sails in the wave and freestyle range.

SC SLALOM

100% Prepreg Carbon Competition slalom The sc-slalom is a full slalom competition mast made with out compromises. The mast to get for your Simmer Style SC sail!

SC 10

The SC-10 is one of the lightest, best performing race masts available today. The center of gravity is low, and the reflex response is the quickest of any mast in our line.

SC 8

The ultimate Free-race/ride/style mast, features superior durability and very high performance at an excellent value

SC 6

When durability counts the SC-6 delivers. This mast has a slightly reduced diameter and increased wall thickness to make it stronger. Boom area and base diameter is still according to industry standards.

SC 3

This entry level Carbon mast offers excellent value with maintained top quality and durability.

LENGTH	STIFFNESS			WEIGHT
CM	MCS	IMCS	LBS	KG
460	25	25	4.0	2.0
430	25	21	3.9	1.8
400	26	19	3.5	1.6
370	27	17	3.3	1.5

CM	MCS	IMCS	LBS	KG
430	25	21	3.9	2.0
400	26	19	3.5	1.8
370	27	17	3.3	1.6


CM	MCS	IMCS	LBS	KG
570	29	39	4.6	2.30
520	27	34	4.8	2.1
490	26	29	4.6	1.8
460	25	25	4.2	1.55
430	25	21	4.2	1.45

CM	MCS	IMCS	LBS	KG
520	27	34	4.6	2.1
490	26	29	3.9	1.8
460	25	25	3.4	1.5
430	25	21	3.0	1.4

CM	MCS	IMCS	LBS	KG
490	26	29	4.2	1.9
460	25	25	3.7	1.7
430	21	21	3.6	1.65

CM	MCS	IMCS	LBS	KG
460	25	25	4.4	2.0
430	25	21	4.2	1.9
400	26	19	4.0	1.8
370	27	17	3.3	1.5

CM	MCS	IMCS	LBS	KG
490	26	29	6.6	3.0
460	25	25	5.9	2.7
430	25	21	5.2	2.4
400	26	19	4.8	2.2
370	26	17	4.4	2.0



After three years of intensive R&D work we are proud to release the Simmer Style boom range. Our dedicated team riders have tested these booms in all types of conditions, all over the world. With this in hand we can assure you that these booms are market leaders when it comes to performance, quality and durability.

The continuous bend profile provides maximum strength, stiffness and performance. The robust front incorporates an anti-friction leaver and a integrated mast shim for RDM masts.

BLACK LINE - Carbon

Lenght	Grip	Profile
140-190	26mm	<i>Monocoque carbon construction</i>
160-220	27mm	<i>Monocoque carbon construction</i>
180-240	29mm	<i>Monocoque carbon construction</i>
200-260	29mm	<i>Classic outline</i>

SILVER LINE - Hybrid

Lenght	Grip	Profile
140-195	29mm	<i>Monocoque carbon/alloy construction</i>
160-220	29mm	<i>Monocoque carbon/alloy construction</i>
180-240	29mm	<i>Monocoque carbon/alloy construction</i>
200-260	29mm	<i>Classic outline</i>

WHITE LINE - Alu

Lenght	Grip	Profile
140-195	29mm	<i>Monocoque alloy construction</i>
160-220	29mm	<i>Monocoque alloy construction</i>
180-240	29mm	<i>Monocoque alloy construction</i>
200-260	29mm	<i>Classic outline</i>

SIMMER STYLE HAS GOT YOU COVERED!

We at Simmer Style take a lot of pride in offering our customers all they need to experience a perfect days sailing. Whether it's at home, at your local break, or somewhere in far off place with an unpronounceable name, we assure you that our products will have you covered time and time again.

Our design philosophy is simple: Every product we produce should be built with the highest quality materials and the best workmanship in the industry; performance, quality and Reliability are the defining features that typify all Simmer Style products.

Make sure you check out our wide range of board bags equipment bags and personal bags online.

XC STYLE

Molded Harness

Available in waist or seat version with high or low back.

Technology

- 3D thermo molded EVA foam
- Pre-shaped mold
- Anatomically designed 3D back support
- Stainless steel quick release
- Double buckle system
- Replaceable nylon bar webbing
- Neoprene coverage
- Nylon edge
- Double-velcro elastic waist straps
- Anti skin abrasion surface

Size: S/M/L/XL

BASE
Push pin
quick release
system



RDM ALU 30cm/48cm
RDM CARBON 30cm/48cm
STD ALU 0cm/30cm/48cm



www.simmerstyle.com

NEW COLORS FOR 2009



MISSION



DOWN THE LINE HIGH PERFORMANCE WAVE

CONSTRUCTION: 7 mil mono-film body panels with X-ply and Kevlar perimeter paneling.

TECH DATA

SIZE	BOOM	LUFF	MAST
2.7	125	310	340/15
3.0	131	324	340/15
3.3	134	344	340/15
3.7	140	374	370/17
4.0	145	388	370/17
4.2	150	394	370/17
4.5	154	407	400/19
4.7	158	416	400/19
5.0	164	423	400/19
5.3	171	432	400/19
5.6	178	441	430/21
6.1	185	456	430/21

RECOMMENDED MAST: RDM 9
SECOND CHOICE: RDM 6 or SC-6

High Aspect Ratio
Longer mast, shorter boom. Gives a direct fingertip feeling with more front-end power located higher in the sail.



MISSION X



HEAVY DUTY SIDE SHORE WAVE

CONSTRUCTION: All X-ply body panels, PVC window, Kevlar perimeter construction.

TECH DATA

SIZE	BOOM	LUFF	MAST
2.7	125	310	340/15
3.0	131	324	340/15
3.3	134	344	340/15
3.7	140	374	370/17
4.0	145	388	370/17
4.2	150	394	370/17
4.5	154	407	400/19
4.7	158	416	400/19
5.0	164	423	400/19
5.3	171	432	400/19
5.6	178	441	430/21
6.1	185	456	430/21

RECOMMENDED MAST: RDM 9
SECOND CHOICE: RDM 6 or SC-6

High Aspect Ratio
Longer mast, shorter boom. Gives a direct fingertip feeling with more front-end power located higher in the sail.



ICON



WORLD WIDE WAVE

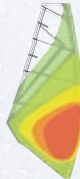
CONSTRUCTION: Full X-ply sail body construction with X-ply and Kevlar perimeter paneling.

TECH DATA

SIZE	BOOM	LUFF	MAST
3.4	137	355	340/15
3.7	141	374	370/17
4.0	146	385	370/17
4.2	151	393	370/17
4.5	156	403	400/19
4.7	159	413	400/19
5.0	167	421	400/19
5.3	172	429	400/19
5.6	180	440	430/21
5.9	182	451	430/21
6.2	188	458	430/21

RECOMMENDED MAST: RDM 9
SECOND CHOICE: RDM 6 or SC-6

Medium Aspect Ratio
The median equivalent between low and high aspect. Power and control combined.



IRON



HYBRID POWER WAVE

CONSTRUCTION: 7 mil mono film body with X-ply and Kevlar perimeter paneling.

TECH DATA

SIZE	BOOM	LUFF	MAST
3.7	144	371	370/17
4.0	147	384	370/17
4.2	154	394	370/17
4.5	156	401	400/19
4.7	161	414	400/19
5.0	168	426	400/19
5.3	175	426	400/19
5.7	183	439	430/21
6.2	189	455	430/21
6.7	195	471	460/25

RECOMMENDED MAST: RDM 9
SECOND CHOICE: RDM 6 or SC-6

Low Aspect Ratio
Longer boom, shorter mast. Low-end power, gives a more constant feeling of power.



XD Freestyle



FREESTYLE

CONSTRUCTION: 7 mil mono film body with X-ply and Kevlar perimeter paneling.

TECH DATA

SIZE	BOOM	LUFF	MAST
5.1	166	431	430/21
5.4	171	441	430/21
5.7	177	450	430/21
6.0	183	459	430/21
6.4	187	479	460/25
6.8	189	488	460/25

RECOMMENDED MAST: RDM 9
SECOND CHOICE: RDM 6 or SC-6

High Aspect Ratio
Longer mast, shorter boom. Gives a direct fingertip feeling with more front-end power located higher in the sail.



SPARK



INTERMEDIATE FREERIDE

CONSTRUCTION: 5 and 7mil mono film body panels, X-ply perimeter paneling, Dacron patch reinforcements, Kevlar Stretch Control Tendons

TECH DATA

SIZE	BOOM	LUFF	MAST
4,5	159	388	370/17
5,0	168	412	400/21
5,5	176	431	430/21
6,0	180	447	430/21
6,5	192	462	460/25
7,0	202	478	460/25
7,5	218	487	460/25
8,0	225	500	460/25

RECOMMENDED MAST: SC-3
SECOND CHOICE: SC-6

Medium Aspect Ratio
The median equivalent between low and high aspect. Power and control combined.



ADDICT



FREERIDE PERFORMANCE

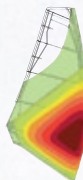
CONSTRUCTION: 5 and 7mil mono film body panels, X-ply perimeter paneling, Dacron patch reinforcements, Kevlar Stretch Control Tendons

TECH DATA

SIZE	BOOM	LUFF	MAST
4,8	165	414	430/21
5,4	182	430	430/21
6,0	194	447	430/21
6,6	206	456	430/21
7,2	211	478	430/21

RECOMMENDED MAST: SC-8
SECOND CHOICE: SC-6

Low Aspect Ratio
Longer boom, shorter mast. Low-end power, gives a more constant feeling of power.



XTYPE VTYPE



FREERIDE HIGH PERFORMANCE

CONSTRUCTION: X-ply film body and perimeter panels, Dacron patch and perimeter reinforcements, Kevlar stretch control tendons
Sizes 6.9, 7.5, 8.2 and 9.0 are also available in a monofilm body construction called **V-TYPE**.

TECH DATA

SIZE	BOOM	LUFF	MAST
4,9	163	418	400/19
5,4	174	437	430/21
5,9	183	450	430/21
6,4	189	466	460/25
6,9	199	485	460/25
7 BATTEN X TYPE AND V TYPE			
7,5	219	487	460/25
8,2	226	507	490/29
9,0	239	526	490/29

RECOMMENDED MAST: SC-8
SECOND CHOICE: SC-6

Medium Aspect Ratio
The median equivalent between low and high aspect. Power and control combined.



2XC



FREERACE

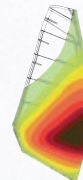
CONSTRUCTION: 5 and 7 mil mono film body panels, X-ply and Kevlar perimeter paneling, Dacron patch reinforcements, Kevlar Stretch Control Tendons.
Batten count- 7 with 4 lightweight tubes Camber Inducers- 2 at batten 5 and 6.

TECH DATA

SIZE	BOOM	LUFF	MAST
5,5	175	430	430/21
6,0	185	449	430/21
6,5	192	462	460/25
7,1	207	477	460/25
7,8	220	487	460/25
8,5	228	503	490/29

RECOMMENDED MAST: SC-10
SECOND CHOICE: SC-8

Low Aspect Ratio
Longer boom, shorter mast. Low-end power, gives a more constant feeling of power.



3XC



FREERACE

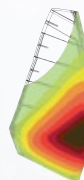
CONSTRUCTION: 5 and 7 mil mono film body panels, X-ply and Kevlar perimeter paneling, Dacron patch reinforcements, Kevlar Stretch Control Tendons.
Batten count- 7 with 5 lightweight tubes Camber Inducers- 3 at batten 4, 5 and 6

TECH DATA

SIZE	BOOM	LUFF	MAST
7,0	203	470	460/25
7,5	216	483	460/25
8,0	221	496	490/29
8,5	231	498	490/29
9,0	238	519	490/29
9,5	246	530	520/34

RECOMMENDED MAST: SC-10
SECOND CHOICE: SC-8

Low Aspect Ratio
Longer boom, shorter mast. Low-end power, gives a more constant feeling of power.





WWW.SIMMERSTYLE.COM

PHOTOGRAPHERS, WAVE, DARRELL WONG

FLATWATER, JULIEN OGOR

STUDIO, MARGARETA ENGSTROM

ALL RIGHTS RESERVED SIMMER STYLE © 2009