

STAR-PACK

Freedom To Choose
... And Carry On.....



Basic: Start, GO or Rio with 6.0 or 7.5 m² rig.

Family: Start, GO or Rio with 6.0 or 7.5 m² rig + 2.0, 3.0 or 5.0 m² rig

For more info and active support, please check out:
WWW.STAR-BOARD.COM



PROKIDS

The next generation

The ProKids team has taken the World by storm,

and Jaeger Stone went as far as to even win over the 04 PWA wave champion.

These scaled down boards provide light sailors 20- 55kg with the tools to improve their learning curve drastically. Many say its all incredible, others know is pure numbers. Once moved on to these adapted high-performance boards, there is a sudden step up to a new level of windsurfing.

Adults will also find the ProKids GO Tufskin and Formula Tufskin exciting and very fast boards to sail. The ProKids Sonic also doubles as an adult's speed board, capable of pushing speeds exceeding 40 knots.

ProKids Acid

The smaller hardcore wave board.
Jaeger Stone's favourite board.
Developed by Jaeger's dad Mark Stone.
Extremely thin and radical.

ProKids Evo

The bigger, more accessible wave board.
Legendary Evo-style performance
Connor Baxter's favourite model.
Designed by World Champion Scott McKercher
and Tiesda You.

ProKids S-Type

The accessible freeride blaster.
Fast and comfortable blaster.
Carve-style rails for exceptional jibing.
Slalom board rocker for speed.
Juergen Saragoza's (aged 7) favourite.

ProKids Flare

The new high speed freestyler.
The pure action board for kids.
Super-fast with its slalom rocker.
Bjorn Saragoza's favourite.
Miniature replica of Taty Frans' Flare models.

ProKids Sonic

The pure slalom machine.
Developed with Connor Baxter.
Extremely fast.
Powerful jibing rails for high speed exits.
Built also for adult use as a 40 knots + speed board.

ProKids GO Tufskin

The accessible progressive freerider.
Extra comfortable with the large mono-pad.
Centre fin box.
Multiple insert positions.
Inboard and outboard strap settings.

ProKids Formula Tufskin

The racing machine.
Formula Experience class legal.
Super-early planing and the widest wind range.

Charlie Chauvet

Jaeger Stone

Connor Baxter

Baker Grant

Jurgen Saragoza

Bjorn Saragoza

Extra-light kids' spec PVC construction on the high-performance models.

Durable Tufskin construction for more value and strength



ProKids Acid

ProKids Evo

ProKids Flare

ProKids Sonic

ProKids S-Type

ProKids Formula

ProKids GO

Starsurfer S & M

ProKids Summary:

- The World's only range of performance boards for youngsters under 55 kg.
- Takes young windsurfers to new levels.
- Sonic / Formula / GO models also double as an adult's board.

Starsurfer Summary:

- For entry-level and progressing kids.
- Entry level features: large mono-pad, multiple insert positions, center fin box, durable construction.
- Suitable for parents' recreational use as well.

The larger **Starsurfers** are cool shapes that have the width, the volume, the comfort, the insert positions, and the center fin for kids to learn and progress on. Parents will also enjoy sailing the Starsurfer as its high-performance shape and durable construction make it a fun, recreational board too.

Specifications

Model	Volume	Length	Width	Tail	Weight +6%	Fin box	Fin	Sail size
ProKids S-Type	72 liters	210 cm	55 cm	36.8 cm	TBA	Tuttle	Drake Freeride Flow 260	2.0-6.0 m ²
ProKids Acid	48 liters	214 cm	50 cm	32.9 cm	TBA	US	Drake Natural Wave 200	1.5-4.0 m ²
ProKids Evo	62 liters	219 cm	54 cm	34.4 cm	TBA	US	Drake Natural Wave 210	2.0-4.7 m ²
ProKids Formula	117 liters	217 cm	93 cm	69.8 cm	TBA	Deep Tuttle	Drake R13 Race NR 620	3.0-8.5 m ²
ProKids Flare	60 liters	214 cm	54 cm	34.2 cm	4.9 kg	US	Drake Style 200	2.0-4.7 m ²
ProKids Sonic	50 liters	212 cm	48 cm	31.5 cm	TBA	Tuttle	Drake Slalom Pro 260	2.0-5.5 m ²
ProKids GO	100 liters	216 cm	76 cm	50.1 cm	TBA	Tuttle	Drake Freeride Flow 400 + 2 plastic fins	1.0-7.5 m ²
Starsurfer S	117 liters	235 cm	71 cm	45.0 cm	TBA	Tuttle x 2	Drake Freeride Flow 380 + 2 plastic fins	1.0-9.0 m ²
Starsurfer M	127 liters	235 cm	74 cm	46.5 cm	TBA	Tuttle x 2	Drake Freeride Flow 400 + 2 plastic fins	2.0-9.5 m ²

TBA: Information not available at time of print. Please check our website www.star-board.com for any updated data.
Dimensions and information in this catalogue may be altered without prior notice during sales season.

THE GUIDE

2-3	Prokids Series
4-5	The Guide
6-7	Channeling the energy
8-9	Behind the Scenes
10-11	From the Past to the Present
12-13	Design, Development, Details
14-15	Technology
16-19	Start
20-21	Rio
22-25	Go
26-29	Flare
30-33	Carve
34-35	Aero
36-37	Kombat

38-39	My Board
	Specifications

40-43	Pure Acid
44-47	Evo
48-49	Diva
50-51	Starboard Racing Development
52-55	iSonic
56-57	Sonic
58-59	S-Type
60-61	F-Type
62-65	Formula
66-67	Accessories
68-69	Starboard Team
70-71	Starboard World Crew
72-73	Starboard Serves
74-75	World Network
76	Hybrid Formula
77	Hybrid Carve



Tiffany Ward



John Carter



Gilles Calvet

CHANNELING THE ENERGY



Svein started windsurfing in 1978 and won the Mistral worlds in 1983. He was a gold medalist candidate for the 1984 Olympics and spent 10 years on the PWA circuit. In 1991 he became the first sailor to win all disciplines in the IFCA Production-board Class Worlds.

Most Starboard master boards are tested by Svein before they get verified for production. Svein is as the sole owner of the brand he founded in 1994, still involved in overseeing every step of the starboard concept from shaping to shipping.



1987, Scott and Svein winning together in Western Australia

Channeling the energy from wind and waves into fuel for windsurfing...

Our challenge is to develop and introduce the most efficient shapes and construction methods to enhance the windsurfing sensation. For '06 we have hugely improved most of our boards both for high-end performance and entry-level ease.

I would like to congratulate Scott McKercher on winning the '04 PWA Wave Sailing Worlds on the stock production EVO he developed with Tiesda You. Let's glance back 25 years in time when most windsurfing was taking place on lakes, the sport had its first peak, and the majority of boards had daggerboards. With the introduction of Hybrid boards, we now have great, all-round fun toys to explore the thousands of lakes around the world and also race in any conditions any day.

At the 2005 Pro kids worlds in Bonaire, over 50 kids from 5-15 had a blast and indicated that windsurfing is becoming one of the youngest action sports. The 30 new windsurfing schools in Norway alone highlight the huge growth potential of the sport.

Starboard was created only 11 years ago, and I would like to thank all the crew at Starboard International, our pro riders, our centers our distributors and the Starboard sailors around the world for making this great adventure possible.

Can you remember what shapes and technologies that were available 11 years ago? Then imagine the quality and innovation of windsurfing equipment 11 years from now. We are ready to bring windsurfing to the next level and deliver you that equipment in half the time.

Svein Rasmussen
President, Starboard International

BEHIND THE SCENES



Trent Pedersen

Trent Pedersen does not really have time to market anything here at Starboard but he still manages to ensure that the world knows about us. Since he started working here, Starboard has expanded so quickly that Trent not only had to manage the marketing but has also had to make sure that all basic business infrastructure was setup, our various teams taken care of, and that our distributors would have all the information tools to make the best decisions. Let's hope we continue to grow like this, as it seems the less time Trent has the more efficient he becomes!



Réli Vila

Réli Vila several times per year flies the 20 hours from the island of Martinique to Thailand with his lovely wife Cecile. Here he helps us with specific product development like the Hybrids boards which leads us into a new era of light wind windsurfing. Réli is a top Formula Windsurfing competitor and has the last 4 years helped us develop Formula boards that not only are setting the standard in performance but also in comfort. Windsurf is a big part of his life and he supports kids and junior team developments on his beautiful island. He is a man with strong views and helps us see the future of the sport.



Eric Girard

Eric Girard is everywhere, the CNN of windsurfing. He has a big heart for everything windsurfing and for his new wife Claudine who helps him reaching his many goals. He lets people see windsurfing in new angles through his many adventures and we look forward to witness his new exciting expeditions.



Ian Fox

Ian Fox has had a great run lately, and his second son Tyler has already ordered a ProKids Sonic. Ian manages our Maui photo shoot. This annual challenge involves arranging the sun, negotiating the wind, timing the helicopters, photographers, 30 riders and ensuring that he still gets time to test new boards for himself, his wife Janine and everyone who wants to know what the new Starboards feel like. The definitive speed freak, he is especially in tune with tuning the "faster" boards in our range.



Joe Dumrongvivat

When Joe Dumrongvivat started with us he first had to learn to use a type writer. Today he is one of the best sales manager in the windsurfing industry and has sales numbers to back it up. He made Starboard the most available product in the windsurfing world by building a strong network into 75 different countries. His sales plan secures Starboard the highest second hand value in the industry. One of his secrets is to hold no central stock and let each country select the board programs that fit their wind and weather conditions.



Per Andersson

Per Andersson has been addicted to windsurfing since first stepping on a board at the age of 9. Before joining Starboard 2 years ago, Per has covered every aspect of windsurfing, from being a pro PWA rider, a retailer and distributor, a board shaper, a pro sail tester, an instructor and working with demos and clinics. He's gone from heading the Swedish Funboard Association to developing secret construction methods on the West coast of Australia in partnership with some of the biggest names in sports. Today, Per carries out the development and testing of many board models into the early hours of the morning, fuelled by unnatural passion and energy. Results from Per's active research efforts into board construction and flex is also just around the corner...



Kjell Vagle

Kjell Vagle is a big problem. He thinks everyone should windsurf, and can not accept anything else. He has over the last 3 years transformed Norway from a country with no windsurfing schools to now have more than 30 schools. Now he wants to take his concepts further south in Europe, and work on introducing closer relations between windsurfing and sailing associations. He normally is right, so we hope he is "normal".



Michael Nakvachara

Michael Nakvachara streamlines testing, transport and anything that can provide us better shapes and organization for the future. Most importantly, he supervised the building of the new "dog penthouse" at the Naklua beach test center. His engineering background keeps us always thinking about how we can move ahead of last years milestones with higher speed that ever.



Keith Baxter

Keith Baxter has been at the forefront of windsurfing development since windsurfing came to Hawaii. Now he is one of the most active people driving the youth movement of windsurfing. He has been appointed personal caddy for the Pro kid sensation Connor Baxter and we expect to hear much from that duo into the future.



Peter Hart

Peter Hart, a former British slalom champion and member of the 40 knot club. Known as the "technique guru". His articles and award winning DVDs have brought help to literally thousands of improving windsurfers worldwide. Runs a clinic tour all over the world from Ireland to the Caribbean. Been testing and sailing for Tushingham for 21 years and aims to do the same with Starboard!



Scott McKercher

Scott McKercher has something few people can grasp. He can sense the future and go in the right direction based on vague traces. He also developed wave sailing boards that changed the way we think about just that, and then further proved that he was right by winning the O4 World Championships on just that kit. What does the future hold for Scott? Probably something much greater, we only hope he will keep us updated as he moves forward.



Ellen Faller and Roger Jackson

Ellen Faller and Roger Jackson, have a "mobile windsurfing program" that travels all over the US throughout the year. They provided the "Taste of Windsurfing" program which gives interested people around the USA an opportunity to try windsurfing with on land simulator instruction by Ellen and on the water instruction with Roger. Both Ellen and Roger are past "USWA Windsurfers of the Year". Send a question to Ellen at www.star-board.com/forum/women/forum.asp or Roger at www.star-board.com/forum/school/forum.asp and you will get more than an answer. We get daily letters from people that appreciate their expertise and support.

FROM THE PAST TO THE PRESENT and PIONEERING THE FUTURE

The Future of Windsurfing – as viewed in 2005 by Jim Drake

Windsurfing is in its infancy compared to other individual participation sports – like skiing, golf, tennis and bicycling. This means that the future can be dramatically different from today.

In 1967, on the day windsurfing was born, skiing already had composite skis and plastic boots, tennis had metal rackets and road bikes were already at a high state of refinement. But these seemingly mature sports still had revolutionary steps in front of them. Snowboards, carbon fiber rackets and bike frames, suspension frames and disk brakes for bikes to name a few. And so it will be for windsurfing, all the more so because of its youth.

Windsurfing is very similar to two other successful and mature sports – skiing and bicycling – that can be used as an analogy to highlight where windsurfing might go. One obvious area is technology. It will

"What's needed is the vision"

improve by lowering the entry level price for high quality gear. Mass produced colorful sails with glued seams are a good possibility here. Technology will also continue to lower the wind required to plane.

Wider boards and deeper fins, perhaps with lifting foils, and radical new sail concepts will move in this direction. And a branch of the sport – recently named cruising – will offer serenity under all conditions.

But perhaps the most important trend will be to expand its potential as a spectator sport to the benefit of its popularity as a participation sport – just like skiing and bicycling. For this to happen the concept of a stadium must be developed. Video recorded events at remote locations do not have the immediacy of real time close in experiences. A more dramatic and effective idea would be outdoor floating bleachers moved from shore and moored suitably close to, say, a slalom 42 or Super X course. **Tickets, advertising, beer and hamburgers could well support such an enterprise.** The synergistic connection between sailor/spectator, competitor/manufacturer and advertiser/entrepreneur works in all other individual sports like windsurfing. What's needed is the vision – and just a little money and luck.

39 years ago: Jim Drake designed, built and sailed the world's first windsurfer.

31 years ago: Matt Schweitzer won the first windsurfing world title, and his family made it the world's most popular watersport.

11 years ago: Starboard was born and pioneered windsurfing ever since.



Photo by: Sunstar



Matt Schweitzer and Svein Rasmussen



Everyone is windsurfing. From 4-year-old kids on the flat waters of Bonaire to people taking their first lessons on a mountain lake in Europe. From the waveriders of Maui and Western Australia, to the high-speed drag racers along the Atlantic Coast. Even a normal, active family on a summer trip can enjoy windsurfing.

Everywhere a patch of water can be found – a lake, a beach, a river or reservoir – people are windsurfing. Be it in the middle of a city, on the southern coast, a calm summer day, or during a windy winter evening on a river, windsurfing has venues the World over.

Everytime the slightest breeze sets in, modern boards of all styles get planing earlier than ever: racing, slalom, wave, bump-n-jump, freeride. Now, new Hybrids offering both modern planing performance and sailing thrills in sub-planing conditions achieve a wider wind range than ever before. Everyone is windsurfing more often.



Advertisement in American Windsurfer 1996

Over the last decade, Starboard has been at the forefront of windsurfing. Continuously pushing the limits of R&D and never afraid to try bold ideas. Starboard continues taking windsurfing to new levels by pushing the development envelope.

Since 1995, the following milestones have been set by the company said to have brought windsurfing back to the masses:

- Wood Technology** - 1995 - the World's first wood sandwich boards.
- GO** - 1998 - the World's first wide short-board, the first full EVA deck.
- Carve** - 1999 - the World's first short, wide freeride boards.
- Start** - 1999 - the World's first ultra-wide beginner board.
- Formula** - 1999 - the World's first dedicated Formula windsurfing board.
- Free Formula** - 2000 - the World's first freeride oriented Formula board.
- Fish** - 2000 - the World's first short and wide real world waveboard.
- Formula Experience** - 2001 - the World's first Formula Experience boards.
- Kiddy** - 2002 - the World's first real kids board.
- Hypersonic** - 2002 - the World's first short, wide slalom boards.
- Compact** - 2004 - the World's first 2m windsurf board made for traveling.
- Pro Kids** - 2004 - the World's first dedicated performance boards for kids.
- Express II** - 2004 - the World's first wide sandwich board with a daggerboard.
- Z-Class** - 2004 - the World's first production Hybrid style board.
- Hybrid Formula/Carve** - 2005 - the World's first Duck-Tail Hybrid boards.
- Aero** - 2005 - the World's first lightwind cross-over board..



Tiesda You
B.Eng Hons (IMechE)
Head of Starboard Concepts, Design and Development

"At the age of 26, Tiesda You is already something different. Shaper for the Starboard brand, he has created an impressive number of mythological boards. Of French nationality, Cambodian origin and born in Sudan, Tiesda grew up in Qatar shaping boards before moving to London to pursue studies in engineering, fluid dynamics and composite materials at UCL. A shaping prodigy and a master of curves." **Portrait by Planchemag, April 2004.**

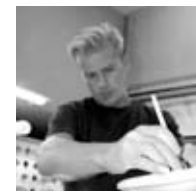
Per Anderson. A Swede bred in the waves of Western Australia, Per shapes, tests, and now manages the day-to-day operations in Starboard's workshop. Over the last year, Per has brought in a new level of quality and precision to our work. Still the pure perfectionist.

Koldt Black. The chief graphic artist whose talent adorns Starboard boards. Mixing windsurfing inspiration with tattoos, comics, beer and, this year, iPods, he has both a unique graphic and working style. "Board graphics," he says, "should be evolutionary and consistent for long term quality, yet with a strong, soulful identity. Something flashy is just short-term fashion."

Herr Udo Busshoff. Starboard's product designer in charge of developing parts and accessories is a meticulous and extremely creative character with a thorough understanding of functionality and design aesthetics. After years of experience in a performance sports retail shop, a diploma in Product design, and now years of experience as a windsurfing parts designer, Mr. German Precision can boast a range of innovative products in his portfolio.

Nimit Pormjan, Gob Sewakul, Pracha Nai Win, Peak Sakarin, and Pop Singhin represent the leading workshop craftsmen of exceptional talent and ability. They make all Starboard prototypes and masters – however big, small, or challenging – with painstaking accuracy and precision.

Per Anderson



Koldt Black



Nimit Pormjan



Herr Udo Busshoff



Gob Sewakul, Pracha Nai Win,
 Peak Sakarin and Pop Singhin



DESIGN DEVELOPMENT DETAILS

The development for the 2006 season has been a year of challenges.

We simply were not allowed to compromise. Our goal for the new Slick Strap was to make it quicker to adjust than any existing quick-adjusting strap and to be more comfortable than a wave strap, yet even lighter. We determined to make the Tiki Tool the World's most adaptable windsurfer's screw driver, working even when your hands are wet to deliver the torque needed to tighten footstraps properly.

When we started to develop the new K9 Anti-Twist system, we dared to make it even more effective, more functional, and simpler to use – and it had to weigh even less than regular inserts. The Clipper Wheel simply had to work on sand, add zero weight to the board on the water, and not get in the way while sailing. The solution was to make it removable with a simple click. While we were at it, we made it compatible with the new board bags, so that you can now roll your gear around all over the place, from the car, to low-tide beaches, and through airport terminals.

We weren't happy with the look of the deep-Tuttle fin bolt holes either. It was standard to leave the hole as a hole, but we thought it would be nicer to trim the holes with a white rubber trim-disc.

Many developments last year were carried through, like the Sand-Proof Clipperbox used on the Start and Rios, the ultra-lightweight, low water-absorption Race Straps used on the Sonics and Formulas, and the uni-directional Fish Scale Pad Texture, and the now industry-standard Safety Washer.

As for board shapes, we made over 240 different prototype shapes this year. Some of them were to make straight forward improvements on existing models; others, like the Hybrid series and iSonics, were developed to break new grounds.

But more boards than ever were made simply to experiment, to investigate and to understand new design theories: aerodynamic lift and its effects on the nose of a board – a board's optimum angle of attack on incoming chop – reducing hydrodynamic drag in the tail – the effects of a planing surface's aspect ratio – optimizing the leverage between fin/planing surface's width and footstrap position – the relationship between a board's centerline rocker and its outside-edge's rocker.

The boards and accessories presented in the following pages mark the 11th anniversary of Starboard. The 2006 Starboard Product Line represents the result of an 11-year development journey that started in 1995: A journey to take windsurfing to the next level.



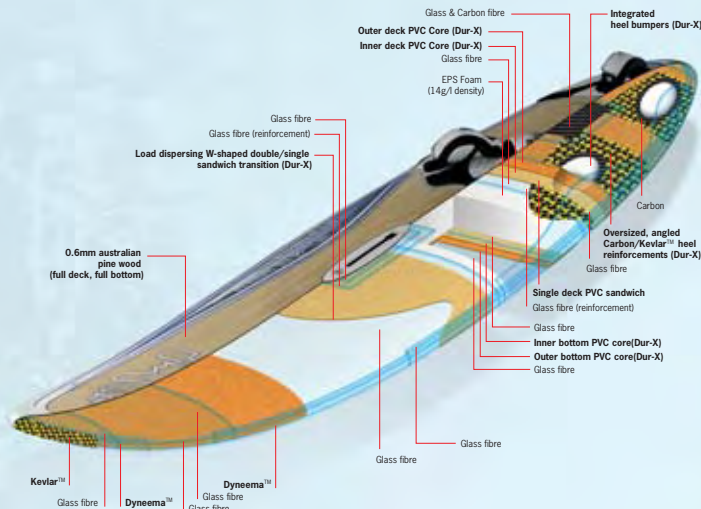
Integrating a sheet of 0.6mm Australian pine wood to the bottom and deck of windsurf boards has been a Starboard trademark since 1995. First developed by New Caledonia's Jean Louis Colmas in 1994, Wood Technology was applied to custom mass-manufacturing by Svein Rasmussen in 1995. These first Wood Technology boards weighed 1 kilo less than the best boards of the time, yet they boasted superior impact resistance, superior structural integrity, and unique rigidity and flex characteristics.

Following their introduction, American Windsurfer magazine said, "The most impressive construction we saw was the wood veneer found on some of the Starboards. According to our weight and ding tests, Starboard managed to marry low-weight – as low as any boards its size – with ding resistance almost comparable to that of boards with thermoformed skins." Today, a decade later, virtually every board brand applies the advantages of wood, but Starboard remains the only brand to harness the craftsmanship of the full wood construction with a full wood-look deck.

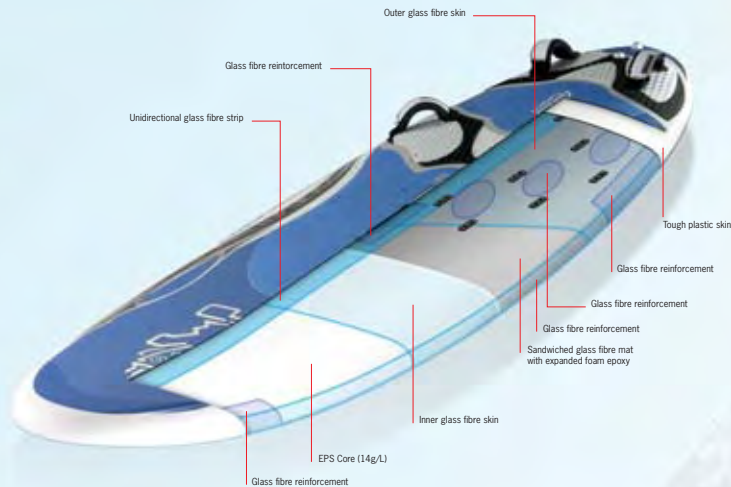
The Advantage of Wood Over Carbon and Conventional Fibers

At 0.6mm, the wood sheet is thicker than a carbon laminate or other fiber laminates, giving it far greater compression resistance and resistance to buckling. As a result, the board is rigid and strong. Carbon or glass fibers are especially poor in compression, and most of the board's bottom area is subjected to compressive loads. A Wood Technology board with its uni directional fibers naturally holds the most critical shape just in front of the fin box better, thus provides the board with its original design over a longer period, promoting higher structural integrity

"The material is very rigid, but very pleasant to sail since we have the impression that vibrations are absorbed without any deformations in the board." **Wind Magazine, France.**



The direct impact resistance created by the 0.9 mm Pine wood veneer fiber laminated on top of glass fibers and PVC has proven to be tremendously higher than the various Carbon weaves we have tested over the years. Being both naturally uni-directional and naturally saturated in resin, pine wood is especially efficient and resists excess epoxy resin absorption, giving it the advantage in weight to strength and impact resistance ratio.



FAST, Full Airex Sandwich Technology, uses a full top and bottom layer of Airex PVC combined with 0.6 mm pine and fiber glass reinforcements in impact areas. This provides a light board with a crisp ride. The warranty rate has been under 0.5 % during the last 3 years.



TUFKIN TECHNOLOGY

Tufskin technology uses a layer of continuous mat fibers sandwiched between 2 layers of glass weave to form a stiff and durable sandwiched laminate.

The fine plastic skin that wraps the entire board adds to its scratch and impact resistance, making it the technology of choice for those looking for durability and strength.

The seamless rail finish and sharp aft release edges add to the value, quality, and performance of Tufskin Technology.



TECHNOLOGY

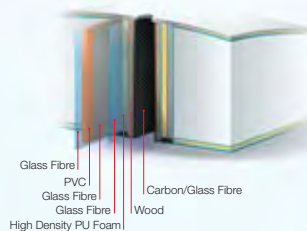
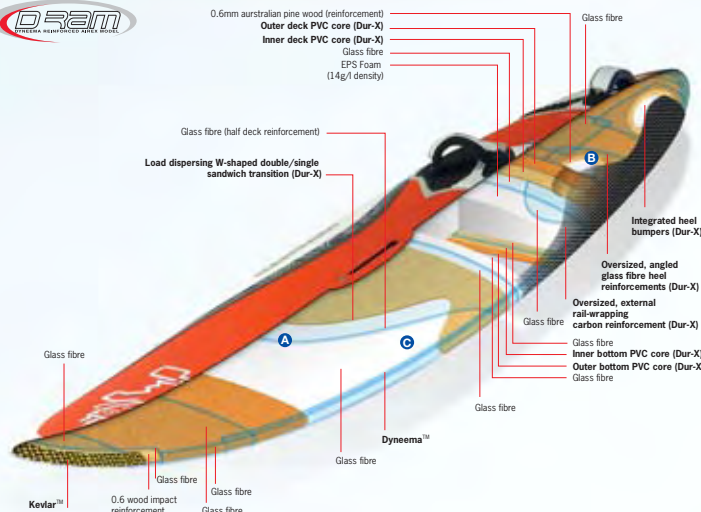
D-RAM TECHNOLOGY



Described as "bulletproof" by the US magazine Windsurfing, Starboard D-Ram models use PVC sandwich construction technology with Dyneema™ layers to maximize durability and strength.

Dyneema™ is a super strong polyethylene fiber produced using a patented gel-spinning process that aligns the molecules into a linear orientation. Dyneema™ fibers are up to 40% stronger than Aramid fibers and provide exceptionally high energy absorption with extremely low elongation. Its energy absorption properties make it the top choice for bullet-proof vests and for impact-resistance in windsurfing boards.

While the Dyneema™ reinforcements protect the areas of the board most susceptible to impacts, carbon adds additional stiffness and strength to the general structure. Like wood-technology boards, the overall skin construction is made from a military-grade, glass-sandwiching, and cross-linked PVC core.



DEEP-TUTTLE FINBOX CONSTRUCTION

In 1995 Starboard made available both Power and Tuttle boxes for the medium and large sized boards. Following feedback from the world market, the original Tuttle systems were the popular choice. Today, we are happy to see that more and more manufacturers are switching over to the Tuttle system in boards that need maximum strength. We are still receiving reports from windsurfing centers praising how much more durable the TT system is than the more fashionable Power box option.

Why Tuttle?

- The original and most reliable fin-box system.
- Widely established amongst pro and top-level recreational sailors as the best fin-mount solution available for all boards other than wave and freestyle.
- The highest level of structural integrity and the most secure fit.
- 2 screws help prevent from losing the fin in the case of a collision.
- Compatibility between Deep-Tuttle and standard Tuttle – a board with a Deep-Tuttle fin box can fit either a standard Tuttle head or a Deep Tuttle head. This is particularly important in boards that take a wide range of fins.
- A GO board, for example, is often used with a smaller fin with a standard Tuttle base. To unleash full performance potential, users then fit in a race fin, available with Deep-Tuttle bases.

"Based on our experience in the rental business we have observed that because of the 2 bolts that the tuttle box carries, there is a lot less of a swing motion possible when the fin hits an object thus the load is carried by the finbox wall and also the thickness of the deck giving it allot more strength versus the one bolt design of the powerbox. This box as I mentioned has the possibility of more of a swing effect if it strikes something, with the full load hitting the wall of the fin box with almost no assistance from the center bolt. **Therefore it is my conclusion that a Tuttlebox is by far stronger than a Powerbox."** **Roger Jurriens, Bonaire Windsurfing Rental fleet**



DUR-X

The Dur-X construction label signifies the use of heel bumpers, double sandwich, oversized, angled reinforcements and optimized external reinforcement patches. The Dur-X standard is used for all Acid and Evo models.

Ⓐ The double-to-single sandwich transition line follows a W-shaped curve to spread the load over a maximized area. The resulting smoother transition reduces the load-concentration ahead of the mast track increasing durability.

Ⓑ Oversized heel reinforcements cover the footstrap inserts, reducing the load concentration that normally occurs between the plastic inserts and the surrounding area. The heel reinforcements are wrapping around the rails to cover the apex of the board and are also angled to spread loading more effectively and prevent total breakage due to localised stress concentration.

Ⓒ A unique mould-marking method guarantees the most accurately built production sandwich boards: heel, nose, rail and 'half-deck' reinforcements follow precisely the design specification to maximize strength-to-weight ratio and enhance durability.

START

Learn easier, plane-up quicker, get hooked faster!

The Start is a dedicated entry-level board for the first step into windsurfing.

The Start - with its beginner-specific features like the daggerboard, roller wheel, enhanced stability, full EVA deck, and multiple insert positions - makes learning to windsurf for anyone easier than ever. Even kids can get started with the Start S.

The Start will appeal to all entry-level people wanting to learn windsurfing as quickly and as easily as possible. It will also be a fun recreational board for intermediate windsurfers and, with a racing fin fitted, advanced windsurfers will be surprised with its speed and racing pedigree performance.

This year, the Start has been updated to integrate a Roller Wheel in the tail, making it easy to pull around. The Clipper Wheel remains compatible, for those who need to roll the Start through sand.



Ashley Baxter

Statistically over 50% of people going to windsurfing clinics are **sporty girls**,... the rest are cool dudes. Become the instructor at your own windsurfing school this summer! Starboard makes it all possible with a special offer of 6 Start boards and rigs + loads of accessories. Check the **6 PACK** details with your national distributor 3 months before your season starts.

Available in orange or color stable blue.

Start S

Start M

Start L

"Starboard is not just happy to have pioneered the compact widestyle beginner board, it is a team that endlessly improves the concept towards more maneuverability and ease of progress. The Start is a currently the most stable and easiest board in the World, while keeping a healthy dose of excitement - no... make that pure fun."

Wind Magazine, France

Planchemag, France, June 2005 Special Summer test issue:

"Learning: The Start is the most stable and most accessible board in the test. With a good selection of footstrap positions, it will work for a wide variety of people and different bodyweights. Perfect to learn planing with the footstraps, it just goes straight and forgives foot placement errors. Tacking and jibing is a breeze.

Progressing: The Start is the sportiest board with the highest cruising speed. It's a true funboard. It goes very well upwind, and does not get upset in rough waters.

Conclusion: More discovery and learning orientated than its cousin the GO, the **Start manages to unite the world of planing and non-planing.** A beautiful offer for windsurfing schools or for riding with the family this summer, from 2m2 to 9m2.

Learning to windsurf: 5/5
Learning to plane: 5/5
Performance in winds up to Force 3: 5/5*

Slight concave in the nose helps guide the beginner's feet around a tacking maneuver.

Full EVA deck for maximum comfort.

Center carry handle.

Slight convex ridge along the center line helps guide the beginner's feet to stay close the board's center.

Wider tail for earlier planing and increased stability.

Nose-carry handle for convenience.

Integrated mast impact protector.

EVA Tufskin construction for maximum durability, comfort, and value.

Extra fat rails in the midsection designed to enhance stability.

Sand-proof Clipperbox daggerboard system.

4 insert positions: beginner, intermediate to advanced.

New! Integrated Roller Wheel for easy transportation.

Summary:

- Dedicated beginner board for everyone.
- Many dedicated beginner features:
 - Daggerboard.
 - Roller wheel.
 - More stability.
 - Full EVA deck.
- Multiple insert positions (beginner/intermediate/advanced).
- Durable and tough construction.

Specifications

Model	Volume	Length	Width	Tail	Weight ±5%	Fin box	Fin size	Sail size
Start S	150 liters	240 cm	85 cm	57.0 cm	TBA	Deep Tuttle + Clipperbox	Daggerboard XS + Drake Shallow 410	2.0-9.0 m ²
Start M	205 liters	259 cm	90 cm	63.1 cm	TBA	Deep Tuttle + Clipperbox	Daggerboard L + Drake Shallow 410	2.0-9.5 m ²
Start L	225 liters	253 cm	101 cm	73.3 cm	TBA	Deep Tuttle + Clipperbox	Daggerboard L + Drake Shallow 410	2.0-11.5 m ²

TBA: Information not available at time of print. Please check our website www.starboard.com for any updated data. Dimensions and information in this catalogue may be altered without prior notice during sales season.

RIO

Progress in style



Svein Rasmussen



Jurgen Saragoza



Rio M

Rio L

The Rio is an ultra-stable, comfortable, and progressive board that will suit entry level sailors and those looking to progress as easily as possible.

Based on the same wide and voluminous designs of the Start, the Rio features super-fat rails in the midsection for extra stability and a sand-proof daggerboard system. The full EVA deck ensures comfort; the multiple insert positions cater for beginners to advanced sailors; and the round, thin tail outline improves jibing.

The Rio will allow you to learn and progress in windsurfing quickly and easily. The wide, shallow fin provides good forward motion and control. With an optional Racing fin fitted, advanced windsurfers will be surprised with its speed and performance.

Shape designed for **maximum stability** and to get planing quickly.

Slight concave in the nose helps guide the beginner's feet around a tacking maneuver.

Center **carry handle**.

Sand-proof **Clipperbox** daggerboard system

Slight convex ridge along the center line helps guide the beginner's feet to stay close the board's center.

Integrated mast impact protector

Nose **carry handle** for convenience.

Extra fat rails in the midsection enhance stability.

EVA Tufskin construction for maximum durability, comfort, and value

4 insert positions: beginner, intermediate to advanced.

Full EVA deck for maximum comfort

Rio S

Summary:

- Stable, comfortable, and easy board for all.
- Many versatility and comfort features:
 - Daggerboard.
 - Enhanced stability.
 - Full EVA deck.
 - Wide shallow fin for forward motion and control.
 - Multiple insert positions (beginner/intermediate/advanced).
- Durable and tough construction.
- Performance with an optional Race fin fitted.

Specifications

Model	Volume	Length	Width	Tail	Weight	Fin box	Fin size	Sail size
Rio S	150 liters	235 cm	85 cm	56.0 cm	TBA	Deep Tuttle + Clipperbox	Daggerboard XS + Drake Shallow 410	2.0-9.0 m ²
Rio M	205 liters	258 cm	90 cm	62.0 cm	TBA	Deep Tuttle + Clipperbox	Daggerboard L + Drake Shallow 410	2.0-9.5 m ²
Rio L	225 liters	253 cm	101 cm	74.4 cm	TBA	Deep Tuttle + Clipperbox	Daggerboard L + Drake Shallow 410	2.0-11.5 m ²

TBA: Information not available at time of print. Please check our website www.star-board.com for any updated data. Dimensions and information in this catalogue may be altered without prior notice during sales season.

GO

One for all



Svein Rasmussen



Tiffany Ward

The GO boards are the original wide, stable, and comfortable freeride boards for progressive windsurfers.

Using their Shallow fin, optional side fins, beginner footstrap positions, and carry handles, the GO boards are ideal for keen beginners, while the racing fin and racing heritage behind the board's shape make it exciting and fast for advanced users.

These boards will appeal to progressing windsurfers looking for a board that will be stable and comfortable to start with, and a high-performance, racy, freeride potential to look forward to.

This year, the GO Tufskins bring added value and durability with a quality finish, while the premium GO F.A.S.T. boards now become even lighter with reduced EVA on the deck. The new optional Clipper Wheel can clip on to the tail to make transporting the GO board a breeze.



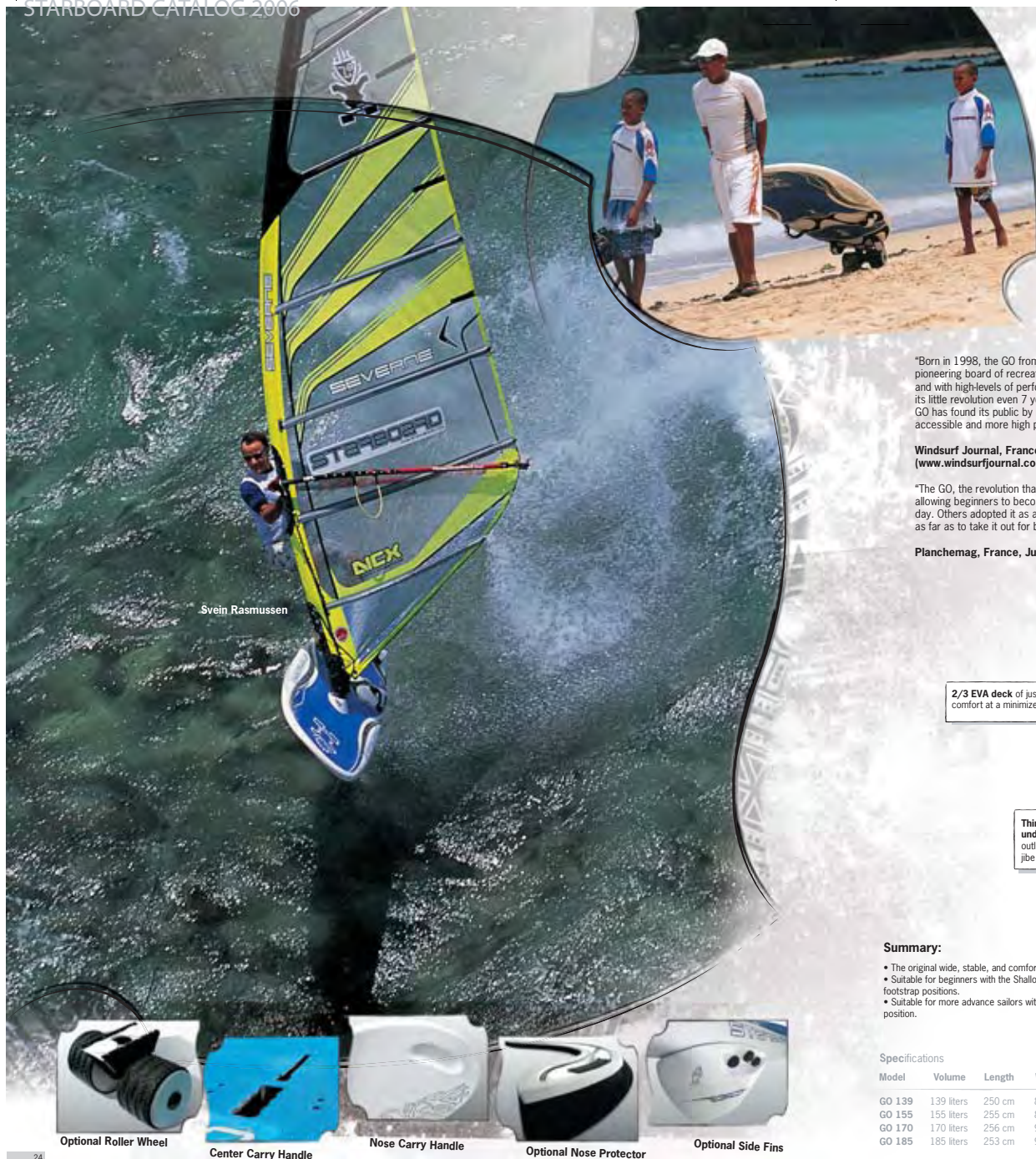
Go 139

Go 155

Go 170

Go 185

"Six years after its conception, the GO concept has remained true to its original philosophy: the board for all." **Planchemag, France, June 2005 Special Summer test issue**



Svein Rasmussen



Optional Roller Wheel



Center Carry Handle



Nose Carry Handle



Optional Nose Protector



Optional Side Fins

Planchemag, France, June 2005 Special Summer test issue

Learning: Introduced in 1998, the GO revolutionized windsurfing by being the first real wide-style compact board. Its program is to make you progress, learn to sail funboards, and plane. It offers you plenty of footstrap options, allowing you to get into them in the blink of an eye. Compared to other boards, it is livelier, it reacts more quickly to carving and to sail movements. It's more slippery and quicker.

Progressing: From GPS measurements, it's the quickest board on test. It's almost bordering on a sporty freeride category by virtue of its shape and equipment level. Fast to get planing in lightwinds, it goes very well upwind thanks to its excellent fin. Perfect for cruising, the GO board is at its best in Force 4/5 winds with those looking for a freeride board that is both accessible and sporty.

Conclusion: Sporty when you want it to be, the GO remains an accessible board to discover planing and jibing. Six years after its conception, the GO concept has not aged a bit, as it has remained true to its original philosophy: the board for all. A superb value for progressing or freeriding in the summer.

"Born in 1998, the GO from Starboard is undeniably the pioneering board of recreational fun Windsurfing. Fun, easy and with high-levels of performance, the GO keeps leading its little revolution even 7 years later! A true bestseller, the GO has found its public by making windsurfing both more accessible and more high performance."

Windsurf Journal, France, April 2005
(www.windsurfjournal.com)

"The GO, the revolution that made windsurfing accessible, allowing beginners to become autonomous within half a day. Others adopted it as an every day board. Others went as far as to take it out for back loops!"

Planchemag, France, June 2004

2/3 EVA deck of just 2mm thickness for extra comfort at a minimized weight.

Thin and heavily tucked-under rails and a rounded tail outline make the GO boards jibe exceptionally well.

Domed deck for extra comfort and grip in all strap positions.

3 levels of footstrap settings:
Beginner strap settings for first-timers.
Intermediate strap settings for a more accessible planing stance.
Outboard strap settings for maximum control, power and speed.

Drag-reducing cut-aways for higher speeds.

Summary:

- The original wide, stable, and comfortable freeride board.
- Suitable for beginners with the Shallow fin, optional side fins, and beginner footstrap positions.
- Suitable for more advance sailors with the racing fin and advanced footstrap position.

Specifications

Model	Volume	Length	Width	Tail	Weight +FB	Weight +RB	Fin box	Fin size	Sail size
GO 139	139 liters	250 cm	80 cm	52.7 cm	TBA	TBA	Deep Tuttle	Drake R13 Race NR 480 (+ Drake Shallow 410 on Tufskin model)	5.0-9.0 m ²
GO 155	155 liters	255 cm	85 cm	59.5 cm	TBA	TBA	Deep Tuttle	Drake R13 Race NR 520 (+ Drake Shallow 410 on Tufskin model)	5.5-9.5 m ²
GO 170	170 liters	256 cm	90 cm	62.2 cm	TBA	TBA	Deep Tuttle	Drake R13 Race NR 560 (+ Drake Shallow 410 on Tufskin model)	6.0-10.5 m ²
GO 185	185 liters	253 cm	99 cm	67.5 cm	TBA	TBA	Deep Tuttle	Drake R13 Race NR 580	6.5-12.5 m ²

TBA: Information not available at time of print. Please check our website www.star-board.com for any updated data.
Dimensions and information in this catalogue may be altered without prior notice during sales season.



Flare 94 Dram



Flare 104 Wood



Flare 114 Dram

FLARE

On fire

The Flares are the new, super-fast, freestyle/freeride, crossover blasters

designed to accelerate, achieve high speeds, and spin tricks in all directions. Super-responsive and ultra-dynamic, the Flares invite you to push the limits of style.

These boards will appeal to freestylers who want to tweak their abilities with new levels of speed. Wide and stable, they also are excellent platforms to progress easily in freestyle. With high levels of comfort provided by the heel gutters, the Flares also appeal to those looking for a dynamic, fast, freeride board in high winds.



Taty Frans

Summary:

- Introduces a new style of super-fast freestyle boards.
- Innovation! All 3 Flares use the slalom rocker of the acclaimed Sonic 100.
- Also suitable for those looking for a dynamic, high-wind, flat-water blaster.
- Stable, comfortable and wide, they are a great platform for first-time freestylers.

Innovation! Heel gutters give extra dome under the feet to avoid the flat-deck syndrome found in most freestyle boards and to lower the point of contact with your feet. More control, more comfort, more grip!

Exclusive Freestyle-specific construction that uses a Pine /Carbon/Kevlar™ outer skin – lightweight, high impact-resistant, and strong.

Sharper rail edge for maximum release and sharper acceleration.

Compact outlines for optimum responsiveness and minimal swing weight.

New trend! The use of a **slalom rocker** is the secret behind the new Flare's super speed and fast dynamics.

Thin shapes for maximum aerial control and minimum swing weights.

Specifications

Model	Volume	Length	Width	Tail	WOOD Weight +5%	DRAM Weight +5%	Fin box	Fin size	Sail size
Flare 94	94 litres	242 cm	60 cm	36.1 cm	6.3kg	TBA	US	Drake Style 220	4.5-6.0 m ²
Flare 104	104 litres	247 cm	64.5 cm	39.3 cm	6.7kg	7.4kg	US	Drake Style 240	5.0-6.8 m ²
Flare 114	114 litres	247 cm	64.5 cm	39.3 cm	TBA	TBA	US	Drake Style 240	5.2-7.0 m ²

TBA: Information not available at time of print. Please check our website www.star-board.com for any updated data. Dimensions and information in this catalogue may be altered without prior notice during sales season.

Nick Warmuth

Konan Lang

Colin Sifferlen

The award-winning and legendary Carves are pure freeride boards

designed for simple, exciting, and high-performance plug-and-play ability. Fast, comfortable, and maneuverable, the Carves excel at jibing and provide an exhilarating, crisp, and free ride.

These boards will appeal to intermediate and advanced windsurfers who want a board that delivers great thrills in simplicity and comfort – all in a balanced package of speed, maneuverability, and control.

This year, the Carves have been updated with new breakthroughs such as the reduced Vee concept to make them ride even faster and crisper with improved jibing quality.

These new Carves have wider tails and shorter lengths, while the construction and number of inserts have all been revised to offer class leading weights. As bold as it sounds, we have just improved a legend.

Eric Girard

"It comes very highly recommended" Windsurf mag UK, June 05

CARVE

Premium Blend



"The maneuverability and jibes are incredible, the initiation is direct and fast, then the carving is grippy and very smooth all the way to the exit. Verdict: a pure freerider with a very versatile and balanced behavior in a wide range of conditions, that particularly likes to go fast and track stupefying jibes"

Wind magazine France on the Carve 101, Special Test issue 2005.

Highest total score with 93%, on the Carve 111, Surf magazine Germany May 2005

Highest total score with 92%, on the Carve 111, Planchemag France April 2005

"Even after years of tests, the Carve evolves year after year with its soul unchanged. That of a stable board, very forgiving and with a magic touch on the water. If there are any sure-bets on the market, the Carve is one of them" "It's the multi-public board, 100% freeride, ideal for a cruising or a sporting ride, whatever your level. An ambassador of a board."

Planchemag France, April 2005

The legendary Carve's original trendsetting **wide and rounded outlines** have brought wide wind range, comfortable ride, and exceptional jibing abilities to the class.

Domed deck for optimum comfort in any strap setting.

Multiple insert positions give a wide range of tuning options and versatility for different ability levels and personal windsurfing styles. The Carve 133, 144 and 162 have an additional third row of inserts to make them super-accessible.

Thin, maneuverability-oriented rails and shapes.

New! Reduced Vee between your feet gives the board a higher and freer ride with greater speed and improved maneuverability. The curvature of the board's rocker along the outline edge is implicitly greater.

Flat tails and mini-cutaways in the Carve 133, 144 and 162 produce maximum speed, greater release, and more efficient acceleration.

Specifications

Model	Volume	Length	Width	Tail	WOOD Weight +0%	DRAM Weight +0%	Fin box	Fin size	Sail size
Carve 101	101	247 cm	62 cm	40.5 cm	TBA	TBA	Tuttle	Drake Freeride Flow 300	4.5-7.0 m²
Carve 111	111	250 cm	65.5 cm	43.4 cm	TBA	TBA	Tuttle	Drake Freeride Flow 340	4.7-7.5 m²
Carve 122	122	252 cm	68.5 cm	43.9 cm	TBA	TBA	Tuttle	Drake Freeride Flow 380	5.1-8.0 m²
Carve 133	133	254 cm	72 cm	46.8 cm	TBA	TBA	Tuttle	Drake Freeride Flow 480	5.4-9.0 m²
Carve 144	144	256 cm	78 cm	52.1 cm	TBA	TBA	Tuttle	Drake Freeride Drive 480	5.8-9.5 m²
Carve 162	162	257 cm	82 cm	54 cm	TBA	TBA	Tuttle	Drake Freeride Flow 520	6.1-10.0 m²

TBA: Information not available at time of print. Please check our website www.star-board.com for any updated data. Dimensions and information in this catalogue may be altered without prior notice during sales season.



Summary:

- Pure Freeride shapes.
- A legendary name: still winning recommendations and tests outright in magazines the world over.
- Thrilling, fast, maneuverable, and comfortable: all in a balanced package.
- New models feature new breakthrough concepts like Reduced Vee and Zero Vee.
- All-new construction combines super-light weight with the same legendary reliability.

Levi Siver

AERO

Lightwinds, camera, action!

Per Andersson

Kevin Pritchard

The Aeros are cross-over, bump-and-jump boards for light to medium winds.

They can carry sails up to 9.0m² and get planing earlier than any other cross-over board, giving an ultra-maneuverable and dynamic performance with the widest wind range. These boards will appeal to high-wind surfers looking to extend their medium and lighter wind sailing time. Advanced freeriders will appreciate it for something more exciting in medium to light winds. More dynamic and maneuverable than any other wide-style board, the Aero excels at light-wind wave riding and begs you to carve hard, loop, and jump.

Delivered with two fins and with 2 sets of insert positions, the Aero can be tuned for freeriding or for maximum maneuverability.

Domed deck for comfort and grip - whether using the inboard strap settings (wave/freestyle mode) or the outboard ones (freende mode).

Super short, wide-style outline for maximum responsiveness and minimum momentum.

Straighter rocker in the tail for a greater speed and a crisper, sharper ride.

Two fins are supplied as standard: a fast freeride blaster and one XL wave fin.

Innovation! Zero Vee between your feet and plenty of vee under the mast track and tail make the Aeros ride high and free, whereas the resulting increased curvature of the rocker along board's outline edge give unprecedented levels of dynamic maneuverability in a wide board.

Inboard strap settings for maximum maneuverability. **Outboard strap settings** for bump-and-jump freeriding.

Soft, tucked, **Evo-shaped rails** with a sharp release edge for a smooth, biting carving ability and crisp straight-line speed with sharp accelerations.

Summary:

- Light to medium wind cross-over board.
- Our most maneuverable and dynamic wide-style board.
- Carries a wide variety of sails (9.5 down to 5.0) for a massive range of use.
- Can be set up for full freeride mode or full maneuverability mode.

Specifications

Model	Volume	Length	Width	Tail	WOOD Weight +0%	DRAM Weight +5%	Fin box	Fin size	Sail size
Aero 117	117 liters	235 cm	71 cm	45 cm	7.2 kg	7.5 kg	Tuttle	Drake Freeride Flow 380+Drake Wave TT 300	5.0-8.5 m ²
Aero 127	127 liters	235 cm	74 cm	46.5 cm	7.5 kg	7.8 kg	Tuttle	Drake Freeride Flow 400+Drake Wave TT 300	5.5-9.0 m ²

TBA: Information not available at time of print. Please check our website www.star-board.com for any updated data. Dimensions and information in this catalogue may be altered without prior notice during sales season.

Aero 117 Wood

Aero 127 Dram

KOMBAT

No Fear

Boujmaa Guilloul



Domed deck for comfort and grip whether using the inboard strap settings (wave/freestyle mode) or the outboard ones (freeride mode).

Evo-inspired wide outlines for a wide wind range, a flowing waveriding style, and earlier planing.

Fast rockerlines and flat-vee hull shape for improved speed and a crisp ride.

Extra-long fin box for optimum freeride and wave tunings. Markings on the board indicate the recommended positions.

Shock-absorbing heel bumpers.

Soft, surfboard rails with a sharp release for a smooth, flowing curve and sharp acceleration.

New! Ultra-high performance CNC G10 Wave Fin + Prepreg Freeride Flow Fin.

The Kombats are cross-over convertible boards, designed as a one-board solution for wave-riding, dynamic freeriding, and freestyling.

These boards will appeal to advanced windsurfers who ride waves when the conditions are right and who like to blast around at speed or freestyle when the conditions are flatter. The Kombat's domed deck, multiple insert positions, extra long fin box, and two interchangeable fins allow tuning to be optimized between freeriding and waveriding.

This year, the Kombats have been revamped to become lighter, faster, crisper and wave-ride better. The main design updates are the new faster rockerlines and a flat-vee configuration adapted to the stretched Evo outlines.

"Majestic board to do it all, it's not only proud to have such an immense range of use, but also it especially delivers incredible performance either in terms of maneuverability in the waves or in acceleration-speed-jibing on flat water... This Kombat is a killer" **Wind magazine, March 2005.**

"Short n' sassy come to mind. You can call it loose, advanced freerider, or a practical all-round big guy's waveboard. A great solution for one board to cover lots of the carvy range." **Windsport, Early Spring 2005**



Kombat 86 Wood

Kombat 96 Dram

Kombat 106 Wood

Specifications

Model	Volume	Length	Width	Tail	WOOD Weight +0%	DRAM Weight +0%	Fin box	Fin size	Sail size
Kombat 86	86 liters	241 cm	59 cm	38.9 cm	TBA	TBA	US	Drake Freeride Flow 300+Drake Natural Wave 240	4.0-6.0 m ²
Kombat 96	96 liters	244 cm	62 cm	39.6 cm	TBA	TBA	US	Drake Freeride Flow 310+Drake Natural Wave 250	4.5-6.5 m ²
Kombat 106	106 liters	245 cm	65.5 cm	40.9 cm	TBA	TBA	US	Drake Freeride Flow 320+Drake Natural Wave 260	5.0-7.5 m ²

TBA: Information not available at time of print. Please check our website www.star-board.com for any updated data. Dimensions and information in this catalogue may be altered without prior notice during sales season.

Summary:

- One-board crossover, convertible solutions for wave-riding, freeriding and freestyling.
- All new models are now lighter, faster, and crisper with more advanced wave-riding ability.
- Multiple insert positions, 2 fins and an extra-long fin box allow for optimum trimming in freeride or wave mode.

PURE acid

The Drug of a Smarter Generation.

Pure Acid is a pure, classic wave board designed for fast and powerful waves.

These boards will appeal to those who like a fast and precise wave riding style with a direct carving feel. While they suit a narrower range of conditions for optimum performance, the Acids remain the ultimate for pure sideshore wave riding.

This year, the all new line of Pure Acids were developed with Kevin Pritchard (for the 80 and 86 sizes) and with Levi Siver (for the 73 size).

The 80 and 86 have become slightly wider for more versatility and to cover a wider wind range. The new fast rockers, flat-vee and hard rail features make them extremely fast and free, while the reduced thickness and finer rails give them added control and grip. The 73 is based on the acclaimed 2005 Acid 70, but with an outline between an Evo and an Acid. Extra wide and round, the Pure Acid 73 has a flowing character like the Evo but with greater speed from its fast rocker – an explosive mix in powerful waves.

MY BOARD

Presented in the following pages is the most complete range of windsurf boards, with all sorts of shapes and sizes, construction, and performance characteristics. With such a wide range of options, selecting the right one will ensure the exact board for your needs.

1. Choose your style

Your style of windsurfing is the first factor in selecting your board. Select from the category list below:

- ▶ **Entry level**
If you have not windsurfed much before and need the easiest possible board to learn and progress on.
- ▶ **Progressive**
If you are looking for a stable, comfortable, and fun board for you or the family, with the versatility to progress quickly to high-performance sailing.
- ▶ **Freeriding**
If you are looking for a fast, high-performance board with plug-and-play versatility – and the best possible jibing performance.
- ▶ **Freeracing**
If you are looking for a racing machine with extreme speed thrills and the rush of a racing edge, all in a more comfortable, more versatile, and more maneuverable package.
- ▶ **Freestyling**
If you are looking for a board that is dedicated to spinning tricks, agility, quick accelerations, and precise maneuverability.
- ▶ **Cross-over**
If you are looking for the radical one-board solution to not only wave-ride and jump when the conditions are right but also to spin tricks and have a blast in flat water conditions, too.
- ▶ **Pure slalom racing**
If you are looking for uncompromised, pro-standard, slalom performance – in search of ultimate speed.
- ▶ **Pure course racing**
If you are looking for the ultimate upwind machine with huge power, speed, and early planing capacity.
- ▶ **Classic wave-sailing**
If you are looking for a board to ride fast, powerful waves in epic conditions in the best spots worldwide – with a classic, hardcore, and powerful style.
- ▶ **Evolution wave-sailing**
If you are looking for a more flowing, wave-riding board with quicker response, more tweak-ability, and an explosive aerial ability. All that in a package that is more versatile, easier, and optimum for a wider range of conditions.

After selecting your style, the suitable board models will be available in a variety of sizes, defined in terms of the board's volume. Of this variety, the correct volume will depend on your body weight and the wind strength at your local spot.

2. Understanding the wind strength at your local spot.

How strong the wind is in your preferred windsurfing location influences the board you need. As a rule of thumb, the lighter the wind, the higher the extra flotation you will need. The stronger the wind, the smaller the board you can have for added control and responsiveness.

3. Select the right board volume

The volume is the single most defining physical characteristic of a windsurf board. Generally speaking, the higher the volume, the more stable and forgiving a board becomes; the lower the volume, the more responsive and more maneuverable it becomes.

Lighter sailors in strong winds, therefore, tend to choose the lower volume boards of a certain range. Heavy sailors in light winds tend to choose the larger volumes in a certain range. Lighter sailors in light winds or heavy sailors in strong winds will often choose something in-between these two extremes.

4. Fine tuning your selection

After selecting your style of sailing and the right volume for you, you may be left with two or three models that are suitable. These models will differ in terms of their shape, their construction, or their fittings. This final step is simply a matter of personal choice.

Windsurfing Style	Board Volume	40	50	60	70	80	90	100	110	120	130	140	150	160	170	180+
	Entry level :												START S RIO S			START M RIO M START L RIO L
▶	Progressive :							PROKID GO	STARSURFER S	STARSURFER M		GO 139		GO 155	GO 170	GO 185
▶	Freeriding :							CARVE 101	CARVE 111	CARVE 122 DNA CARVE 122	CARVE 133	CARVE 144 DIVA CARVE 144		CARVE 162	HYBRID CARVE	
▶	Freeracing :			PROKID S-TYPE			S-TYPE 93	S-TYPE 104	S-TYPE 115		S-TYPE 126	F-TYPE 138	F-TYPE 148	F-TYPE 158		
▶	Freestyle :		PROKIDS FLARE				FLARE 94	FLARE 104	FLARE 114							
▶	Cross-over :				KOMBAT 86	KOMBAT 96	KOMBAT 106	AERO 117	AERO 127							
▶	Pure slalom racing :	PROKID SONIC			SONIC 85	SONIC 95	ISONIC 105	ISONIC 115	ISONIC 125	ISONIC 135						
▶	Pure course racing :								PROKID FORMULA					FORMULA 160		
▶	Classic wave-sailing :	PROKID ACID			PURE ACID 73	PURE ACID 80	PPURE ACID 86									
▶	Evolution wave-sailing :		PROKIDS EVO EVO 62 DNA EVO 62	EVO 70 EVO 74	EVO 83	EVO 91										



"Among the very best boards tested at the start of this season. The carving is exceptional; we can load up the front foot and commit to the curve. The Acid then shows how you can go and smack the lip to the nearest millimeter. Waveriders will not be disappointed: you can do anything you want with this board under your feet. The sensations are extreme and the drive is of uncanny precision in down the line conditions." **Planchemag France.**

Boujmaa Guilloul

New! Ultra-high performance CNC G10 Wave Fins.

Summary:

- Pure, classic wave boards.
- Designed for fast and powerful waves in sideshore conditions.
- New developments have made Pure Acid more versatile.
- 80 and 86 models designed with Pritchard for speed and maximum carving grip.
- 73 model designed with Siver for a fast, explosive and flowing style.

Specifications

Model	Volume	Length	Width	Tail	WOOD Weight + fin	DRAM Weight + fin	Fin box	Fin size	Sail size
Pure Acid 73	73 litres	239 cm	55 cm	34.9 cm	6.2 kg	6.8 kg	US	Drake Natural Wave 220	2.5-5.0 m ²
Pure Acid 80	80 litres	242 cm	56 cm	33.3 cm	6.4 kg	7.0 kg	US	Drake Natural Wave 230	3.5-5.5 m ²
Pure Acid 86	86 litres	245 cm	59 cm	35.3 cm	6.8 kg	7.4 kg	US	Drake Natural Wave 240	4.2-6.0 m ²

Please check our website www.star-board.com for any updated data. Dimensions and information in this catalogue may be altered without prior notice during sales season.

EVO

Evolution of A Trendsetter

Scott McKercher

The Evos are next-generation, “Evo-lutionary” wave boards

designed to maximize performance in a variety of wave conditions, and for a variety of ability levels. They have created a whole new trend since their introduction in 2003, and they continue to be class leaders today.

These boards will appeal to those who ride waves in a variety of conditions and to those who are looking to make progress in wave riding. From epic sideshore waves to onshore chop, from first-timers to expert wave-sailors, the Evos will make the most of any wave by keeping speed on the wave face, flowing through tight turns, and exploiting the smallest of lips to project huge aerals.

This year, the Evo 83 and 91 have been updated with a mono-concave that has been brought farther back. The transition to double-concave used to be between the front and back feet; now, it is just involves the back foot. This produces a slightly flatter rocker down the centerline for greater speed and release, while the curvature along the outline remains untouched to maintain the same legendary maneuverability.

The only production board ever to have been crowned PWA Wave World Champion (with Scott McKercher, PWA Wave World Champion 2004).

2003: "More than a simple evolution for modern waveriding, Starboard's Evo is the first ever waveboard which efficiently suits top hardcore sailors' needs and also the 'wave-rider learners' looking for ease of use"
Wind magazine, France

"It offers super-hero waveriding ability out of a can"
Windsurf magazine, UK

"It's the universal board on which we can surf all the waves in the World, whether you are a beginner or a pro."
Planchemag, France

2004: "The best waveboard for those who want to attack as radical as possible. Our test-favorite for its ability to adapt to different skills and bodyweights. A board on which one's waveriding skills progress faster"
Planchemag, France.

2005: "No one has beaten the Starboard Evo at its own game. None of the newcomers give quite that same magic on a wave the Evo displayed yet again"
Boards Magazine, UK

2005: "The Evo took many by surprise with its revolutionary shape. The concept has spawned a whole new breed of waveboard, with some similar shapes appearing from other manufacturers this year."

Verdict
Unmatched around corners with a very easy and extremely practical nature. Highly recommended."
Windsurf magazine, UK

Konan Lang

Scott McKercher



Evo 62 Dram

Evo 70 Wood

Evo 74 Dram

Evo 83 Wood

Evo 91 Dram

Ultra-strong **Dur-X** construction standard.

Extra-wide outlines for added versatility and wind range.

Extra-short outlines for improved responsiveness and reduced swing weight.

Shock-absorbing **heel bumpers**.

Wider tail with a rounded outline and plenty of Vee gives the Evos their versatility, ease of use, and ability to project huge aerials.

New! Ultra-high performance CNC G10 wave fins.

Soft, surfboard rails for a smooth, flowing carve.

Mono-concave to Double-concave hull shape for maximum grip.

Summary:

- Evolutionary wave boards that maximize performance in a variety of waves, from beginners to experts.
- The Evos have a flowing riding style with an exceptional ability to carry speed in tight turns and project huge aerials.
- The Evos have created a whole new trend and still continue to be the class leaders.

Specifications

Model	Volume	Length	Width	Tail	WOOD Weight +5%	DRAM Weight +5%	Fin box	Fin size	Sail size
EVO 62	62 litres	219 cm	54 cm	34.4 cm	5.9 kg	6.5 kg	US	Drake Natural Wave 210	2.3-4.7 m ²
EVO 70	70 litres	229 cm	55 cm	36.1 cm	6.2 kg	6.8 kg	US	Drake Natural Wave 220	2.5-5.0 m ²
EVO 74	74 litres	233 cm	56 cm	36.4 cm	6.3 kg	6.9 kg	US	Drake Natural Wave 220	3.5-5.5 m ²
EVO 83	83 litres	234 cm	58 cm	39.9 cm	6.7 kg	7.2 kg	US	Drake Natural Wave 230	4.0-6.0 m ²
EVO 91	91 litres	236 cm	62 cm	40.2 cm	7.0 kg	7.6 kg	US	Drake Natural Wave 240	4.5-6.5 m ²

Please check our website www.star-board.com for any updated data.
Dimensions and information in this catalogue may be altered without prior notice during sales season.



Dorota Staszewska

DIVA

Tailor made

Starboard is supporting the growth of women's windsurfing. Our involvement is at different levels from dedicated products, to events, clinics and athletes sponsorships. We invite you to help us find more ways to expose windsurfing to women.

The Divas feature graphics with a more feminine touch and special features like lighter construction on the Diva Evo and a comfortable full-deck EVA on the Diva Carve.

These boards will appeal to women who want a less macho board that still stands out with alternative graphics and special features. The Diva Carve, in particular, will appeal to women who want added comfort as well.

This year, the Diva Carve shapes have been updated with new design break throughs such as the Reduced Vee and Zero Vee concepts. With a freer ride, higher speeds, and more dynamic jibing qualities, these new Divas offer higher levels of performance than before.

The **Diva Evo** is a small and radical wave board with an attitude for fast, flowing moves and explosive, tweaked aerials. Short and wide, it will keep its speed on the smallest of waves to make the most out of any condition. More accessible than classic wave boards, the Evo design also becomes the ideal choice for women looking to start wave-sailing.



Diva Evo 62



Diva Carve 122

Thin, soft rails and a rounded tail outline for extra carving grip, comfortable control, and smooth jibing.

Domed deck for extra comfort and grip in all strap positions.

Several levels of footstrap settings:

Inboard strap settings for a more accessible stance

Outboard strap settings for maximum control, power and speed

3rd row of extra-inboard settings on the Diva Carve 144 for accessibility



Diva Carve 144

Full EVA deck for extra comfort in the Diva Carve.

- Summary:**
- Graphics with a more feminine touch.
 - Lighter construction details on the Diva Evo.
 - Comfortable full-deck EVA on the Diva Carve.



Specifications

Model	Volume	Length	Width	Tail	DRAM Weight +0%	Fin box	Fin size	Sail size
Diva Evo	62 litres	219 cm	54 cm	34.4 cm	TBA	US	Drake Natural Wave 210	2.3-5.7 m²
Diva Carve 122	122 litres	252 cm	68.5 cm	43.9 cm	TBA	Tuttle	Drake Freeride Flow 380	5.1-8.0 m²
Diva Carve 144	144 litres	256 cm	78 cm	52.1 cm	TBA	Tuttle	Drake Freeride Drive 480	6.1-10.0 m²

TBA: Information not available at time of print. Please check our website www.starboard.com for any updated data. Dimensions and information in this catalogue may be altered without prior notice during sales season.



STARBOARD RACING DEVELOPMENT

"When people don't believe in your idea, you know you might be on to a breakthrough."

STARBOARD'S RACING DEVELOPMENT PROGRAM HAS BEEN PUSHING THE LIMITS EVER SINCE THE VERY BEGINNING OF THE BRAND THROUGH MASSIVE RESEARCH EFFORTS IN ALL DIRECTIONS: AERODYNAMIC LIFT AND DRAG, ANGLES OF ATTACK, HYDRODYNAMIC LIFT AND DRAG, MECHANICAL LEVERAGE, PLANING SURFACE ASPECT RATIO, EFFECTS OF THE LEEWARD RAIL, OF TAIL CUT-AWAYS etc.

At times, the test designs and concepts were so extreme that even the race team and test pilots were worried! They would then take these latest designs and win.

1995 – Sonic boards introduce the innovative Wood technology developed in New Caledonia, weighing in at a kilo less than the competition. The technology contributed to securing the Production World Speed Record, then winning the Production Boards Worlds in racing and slalom the following year.

1999 – Racing was revolutionized by the Formula, the first wide-style racing board that turned the racing World upside down with its superior upwind performance, wider wind range, and earlier planing. In the Formula Worlds

2000 – the Formula took all top 6 places – probably the most exciting design victory in the history of windsurfing!

2002 – The Hypersonic is introduced, sending shockwaves through the market and leading the way for a return to slalom and speed. Boards magazine, UK said, "No other board to date has revolutionized modern Windsurfing like the Hypersonic."

2005 – The S-Type and F-Type, Racing Development's more freeride-type boards, are introduced, offering racing edge thrills in a more maneuverable and comfortable package.

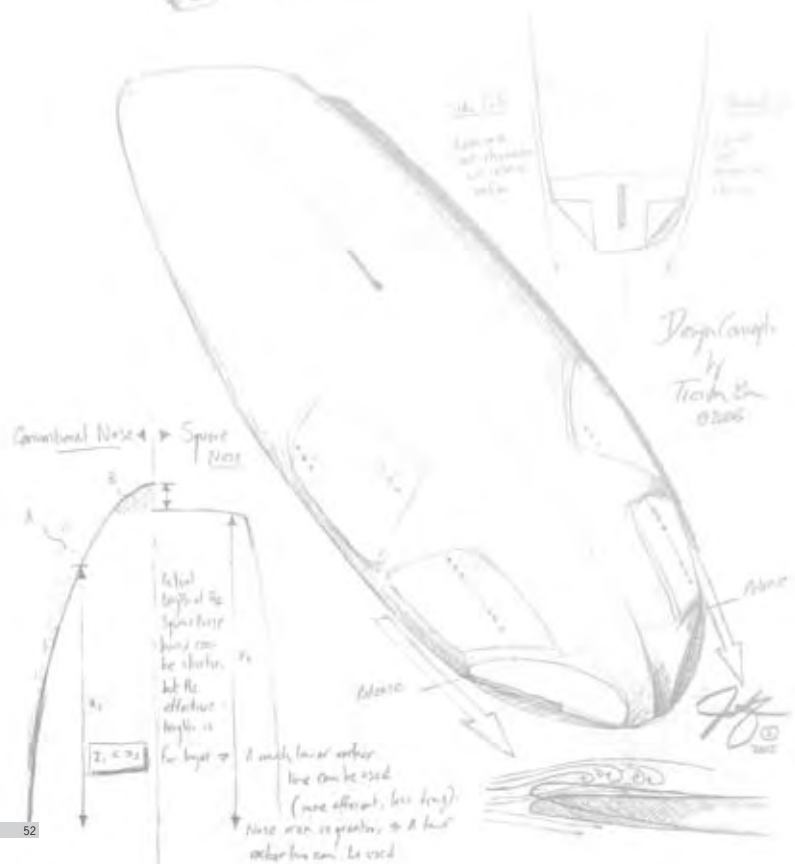
2006 – iSonics, cool as ice, replace the Hypersonics and larger Sonics with its own innovations – low-rocker square noses that compensate through aerodynamic lift and side cuts in the tail.

iSONIC

ice cool



2006 Shboard iSonic



Svein Rasmussen

THE iSONICS ARE PURE SLALOM BOARDS THAT REDEFINE MAXIMUM EFFICIENCY: MAXIMUM TOP-END SPEED THROUGH A MASSIVE WIND RANGE, WITH THE POWER TO OVERTAKE COMPETITORS AND THE SHARPNESS TO ACCELERATE WITH EVER GUST.

These boards will appeal to slalom racers and advanced windsurfers looking for a board that will make them the fastest in a wide range of conditions. The square nose on these wide designs allow for rockers that are lower than ever before possible on round-nose boards. The iSonic glides ultra-efficiently and effortlessly over chop, with more control in strong winds.

iSonic's are delivered with two fins to make the most of their massive wind range.

Summary:

- iSonics redefine maximum efficiency.
- Maximum top-end speed with a massive wind range.
- Powerful tail shapes for overtaking ease.
- Lower and shorter square nose makes iSonics glide effortlessly through chop.
- Low and shorter square nose brings optimum control in strong winds.
- Two fins come as standard to make the most of the massive wind range.

Super short lengths for maximum responsiveness, maximum control, and minimum inertia.

Wide outlines for more power, earlier planing, and a wider wind range.

Innovation! Side-cuts create a release edge on the leeward rail. This edge, like the cut-aways, reduces drag and increases efficiency by providing a clean release to the water that flows over the leeward rail.

Two fins are supplied as standard to cover the wide wind range.

Innovation! The low, square nose concept allows for an ultra- efficient rocker line that glides effortlessly through chop.

A square nose carries more area than a rounded nose, which therefore generates more aerodynamic lift and provides more overall board length (even though the maximum length is shorter). The rocker can therefore sit much lower over the water, giving a much lower angle of attack over chop. The square nose's angle of attack is also lower aerodynamically, therefore, generating both less drag and less excessive lift in gusts.

Rail shapes designed for control and power, with a sharp-release edge for maximum efficiency and a slight tuck for smooth, powerful jibes with fast exit speeds.

Tail cutaways reduce wetted surface and increase the wetted surface area's aspect ratio for maximum efficiency.

Specifications

Model	Volume	Length	Width	Tail	WOOD Weight +45%	DRAMA Weight +55%	Fin box	Fin size	Sail size
iSonic 105	105 litres	233 cm	63 cm	42.9 cm	TBA	TBA	Tuttle	Drake Slalom Pro 340 (recommended for sails under 7.5) + Drake Slalom 400 (recommended for sails over 6.9)	5.5-8.5 m²
iSonic 115	115 litres	233 cm	68 cm	47.4 cm	TBA	TBA	Tuttle	Drake Slalom Pro 340 (recommended for sails under 7.6) + Drake Slalom 420 (recommended for sails over 7.2)	5.8-9.0 m²
iSonic 125	125 litres	230 cm	75 cm	50.7 cm	TBA	TBA	Tuttle	Drake Slalom Pro 360 (recommended for sails under 7.8) + Drake Slalom Pro 440 (recommended for sails over 7.5)	6.0-9.5 m²
iSonic 135	135 litres	228 cm	80 cm	54.8 cm	TBA	TBA	Tuttle	Drake Slalom Pro 380 (recommended for sails under 8.1) + Drake Slalom Pro 440 (recommended for sails over 7.8)	6.5-10 m²



Gerald Pelleau

Ian Fox

Dorota Staszewska

Ultra-lightweight boards that will deliver blistering bursts of acceleration and warp speed in high winds.

THE SONICS ARE PURE SLALOM BOARDS DESIGNED FOR UNLIMITED, TOP-END SPEED AND ABSOLUTE CONTROL IN CONSISTENT AND STRONG WINDS.

These boards will appeal to slalom racers and advanced windsurfers looking for an ultra-lightweight board that will deliver blistering bursts of acceleration and warp speed in high winds.

Rail shapes are designed for grip and power under your feet, with a lightly tucked-under shape for a powerful and fast jibing advantage at the mark.

This year, for improved responsiveness and control, the Sonic 95 has a thinner nose than its predecessor, the Word Champion Sonic 100. The brand new Sonic 85 is based on the same design concept, but it sports a more slender rocker and a narrower outline designed for super-high winds. The Sonic 85 ultimately becomes Starboard's fastest model.

Narrower outlines for maximum control and reduced drag in high winds.

Rail shapes designed for control and power with a sharp-release edge for maximum efficiency and a slight tuck for smooth, powerful jibes with fast exit speeds.

Racing finish on the bottom for minimum weight and higher accuracy.

"Remaining supremely controlled at all times, it feels incredibly efficient under foot and accelerating with every gust, possessing a seemingly limitless top-speed. You find yourself constantly hunting for more powerful gusts to push the Sonic to new levels; such is its thirst for more energy. This insatiable desire to go faster coupled with its controllable nature make it a devastating board for use over distance in powered conditions.

Verdict: A true slalom thoroughbred, the Sonic has a limitless top-speed and the straight line control to match. Coming into its own in powered or over-powered conditions, it is recommended for those that want the chance to be the fastest on the water."

Windsurf magazine UK, May 2005

Recessed mast tracks for added control.

Slender rockers for an efficient ride over chop.

Ultra-lightweight **racing straps** weighing a mere 90g dry. They are designed to absorb a minimum amount of water, saving up to a total of 400-500g.

Sonic 95

Sonic 85

Summary:

- Pure high-wind slalom machines.
- Unlimited top-end speed and acceleration.
- Ultra-lightweight Wood construction.

Specifications

Model	Volume	Length	Width	Tail	Wood Weight +6%	Fin box	Fin size	Sail size
Sonic 85	85	245 cm	56 cm	36.5 cm	TBA	Tuttle	Drake Slalom Pro 300	5.0-7.0 m ²
Sonic 95	95	245 cm	58.5 cm	38.7 cm	TBA	Tuttle	Drake Slalom Pro 320	5.5-7.8 m ²

TBA: Information not available at time of print. Please check our website www.star-board.com for any updated data. Dimensions and information in this catalogue may be altered without prior notice during sales season.

S-TYPE

2 Fast 2 Furious

THE S-TYPES ARE HIGH-SPEED, SLALOM-BASED, FREERIDE SHAPES

that use a blend of Kevin Pritchard's acclaimed Sonic 100 slalom rocker – combined with the Carves' freeride outlines and thin, rounded rails. The S-Type will deliver a fast and crisp slalom-type ride in a straight line with more comfort and more maneuverability than pure slalom boards. They jibe smoothly with the grip and confidence to keep their speed in the turns. Short noses and inboard strap settings make it suitable for Supercross action –when reduced swing weight and extra maneuverability are needed to perform speed loops and spocks.

These boards will appeal to windsurfers who want a dose of high speed action to go with their freeriding without the technical complications of a pure slalom board.

This year, the thickness in the nose of the S-Types has been reduced to move the board's center of gravity farther back, giving more control and improved responsiveness. The rails just ahead of the mast tracks have been beveled up to compensate for the volume and actually reduce catching or sinking midway through a jibe.



"Almost playing in the slalom program, this S-Type offers unbelievable performance potential and a jibe to take your breath away. A definitive sporting board that will seduce those looking for adrenalin rushes and who want to do more than just be fast."
Planchemag France, Special Test issue 2005. Top scorer in its category.

"Jaw-dropping speed" **Windsurfing mag USA, April 05**

Only board to get top score for speed by
German Surf mag test June 05.

Specifications

Model	Volume	Length	Width	Tail	WOOD Weight +6%	DRAM Weight +6%	Fin box	Fin size	Sail size
S-Type 93	93	242 cm	59.5 cm	37.7 cm	TBA	TBA	Tuttle	Drake Freeride 280	4.0-6.5 m ²
S-Type 104	104	242 cm	60.5 cm	39.1 cm	TBA	TBA	Tuttle	Drake Freeride 290	4.5-6.8 m ²
S-Type 115	115	242 cm	64 cm	40.1 cm	TBA	TBA	Tuttle	Drake Freeride 330	4.8-7.2 m ²
S-Type 126	126	245 cm	67 cm	41.5 cm	TBA	TBA	Tuttle	Drake Freeride 390	5.0-8.0 m ²
S-Type 137	137	244 cm	72 cm	47.2 cm	TBA	TBA	Tuttle	Drake Freeride 480	5.4-8.5 m ²

TBA: Information not available at time of print. Please check our website www.starboard.com for any updated data.
Dimensions and information in this catalogue may be altered without prior notice during sales season.

Eric Girard

Kevin Pritchard



Domed deck for extra comfort and grip in all strap positions.

The **new nose shape** is thinner to help reduce swing weight and move the board's center of gravity further back. This adds to the board's natural responsiveness and control.



Inboard strap settings for maximum maneuverability and Supercross action.

Thin soft rails and a rounded outline for extra carving grip and smooth, fast jibing performance.

Summary:

- High-speed slalom-based freeride shapes.
- More comfortable and maneuverable than pure slalom boards.
- Freeride rails and outline make for smooth, fast jibes.
- Inboard strap settings for Supercross action.

Short nose for high levels of control and responsiveness, with easier speed-looping abilities.

F-TYPE

instead of waiting

Svein Rasmussen

THE F-TYPES ARE HIGH-PERFORMANCE, LIGHT-WIND, FREERACING MACHINES DESIGNED TO TRIPLE THE NUMBER OF DAYS YOU CAN WINDSURF.

With plenty of racing fun, the F-Types handle the biggest sails to provide an alternative to waiting for windier days.

Their wide-style outlines, comfortable nature, and multiple insert positions make them stable and accessible platforms – for keen, progressing recreational sailors as well as wind-tested experts.

These boards will appeal to windsurfers wanting to windsurf while waiting for windier days and to progressing sailors who want a stable, accessible wide board capable of more thrilling racing performance.



F-Type 138 Dram

F-Type 148 Wood

F-Type 158 Dram

"It alters perception of light-wind sailing with ballistic planing (and coasting) power. Lightweights and Formula foes had no control issues with its width. Point and go –upwind, downwind, beam reaching- it did it, quite often when its rivals could only schlog." **Windsurfing Mag USA, May 05.**

Wide outline also provides plenty of stability, making F-Types accessible and progressive.

Short outlines for responsiveness and control.

Domed deck for extra comfort and grip.

Wide-style designs with a wide tail for lightwind power and blistering accelerations.

Thin soft rails and a rounded tail outline for extra carving grip, comfortable control and smooth jibing

Cut-aways in the tail reduce wetted-surface area and increase the planing surface's aspect ratio, minimizing drag and maximizing efficiency.

Inboard strap settings for a more accessible stance.

Outboard strap settings for power and speed.

Summary:

- High-performance light-wind Freerace machines.
- Stable and accessible boards for progressing sailors looking to step up to higher levels of performance.
- F-Types are the alternative to waiting for windier days: they can triple a windsurfer's on-the-water time.

Specifications

Model	Volume	Length	Width	Tail	WOOD Weight +(-)	DRAM Weight +(-)	Fin box	Fin	Sail size
F-Type 138	138 liters	222 cm	88 cm	60.3 cm	TBA	TBA	Deep Tuttle	Drake R13 Race NR 520	5.0-10.0 m ²
F-Type 148	148 liters	222 cm	96 cm	67.0 cm	TBA	TBA	Deep Tuttle	Drake R13 Race NR 560	5.5-10.5 m ²
F-Type 158	158 liters	231 cm	100 cm	73.1 cm	TBA	TBA	Deep Tuttle	Drake R13 Race NR 640	6.0-12.5m ²

TBA: Information not available at time of print. Please check our website www.star-board.com for any updated data. Dimensions and information in this catalogue may be altered without prior notice during sales season.



Wojtek Brzozowski



Kevin Pritchard

FORMULA

The right Formula



Kevin Pritchard



Michael Polanowski



Ross Williams



Sam Ireland



Andrea Cucchi



Gerald Pelleau



Dorota Staszewska



Jesper Orth



Christine Johnston



Wilhelm Schurmann

FROM THE VERY BEGINNING OF THE CLASS, STARBOARD HAS LED THE WAY AND PICKED UP THE MOST MEDALS WORLDWIDE.

Since 1999, high-paced development, more experience, more designers and more resources combine for successive Formula models that still take the lead year after year.

Nine out of the top eleven racers in the first 05 Eurocup chose Starboard. Racers year after year conclude that the right Formula for most conditions is developed by Starboard.

For '06 we again took the original Formula concept to a new level of overall speed, control, and comfort which easily outperforms the benchmark 159 in all conditions and on all tacks.

Over the years, we have built well over 100 different Formula prototypes and for '06 alone we tested 18 different shapes. We have experimented with the wildest concepts and brought into production refined designs that have been tested in a huge variety of conditions.

The 7th generation Formula features a wider nose for the same given length, which translates into greater lift for a higher ride, lifting the board up higher over the water. The side-cuts in the tail help increase the wetted surface's aspect ratio and allow the water that sticks to the leeward rail to release earlier. These side-cuts also make the new Formula 160 more comfortable and balanced. The greater tail width makes up for the lost surface, increases light-wind, bottom-end power, and increases aspect-ratio even further for higher speeds, and provides more mechanical leverage to increase upwind and downwind angles.

The Starboard Formula is all about dedication to innovation and refining the results. Seeing the great growth potential of the Formula windsurfing class, we would strongly like to recommend the FW class association to limit the rig size to maximum 11 square meters to enable and inspire more sailors to go racing. Our development team - Remi Vila, Per Anderson, Svein Rasmussen and Tiesda You - all have sore backs after hauling unnecessary large rigs during the annual test program.



Formula Experience, the next cycle.

A unique concept of fair and exciting racing in combination with simplicity and social happenings.

The FE class is open for new board designs only each 4 years, the year 06 starts the second cycle of this class.

New designs are now introduced to keep the class at the cutting edge in design, yet at a reasonable price level due to the durable Tufskin construction.

The 06 Starboard Formula experience board which is identical to the 06 Starboard Formula in shape, will be state of the art for this class over the next 4 years, ensuring competitors a simple and affordable long term choice.

The international **Formula Experience Class** is a multi manufacturer, multi design class based on modern wide style shapes for youth and Juniors as well as seniors and masters looking for an affordable racing class. The class received international recognition in 2003 and is the official Youth and Junior in the USA, Germany, France and other key windsurfing markets.

www.formula-experience.org



Formula Experience



Formula 160 Wood

Short nose for high levels of control and responsiveness.

Cut-aways in the tail reduce wetted-surface area and increase the planing surface's aspect ratio, minimizing drag and maximizing efficiency.

Racing finish on the bottom for minimum weight and higher accuracy.

The wider nose for the same given length translates into greater lift for a higher ride, lifting the board up higher over the water.

Innovation! 90 degree **side-wall** rail shapes designed for extra power and upwind bite, with a sharp release edge for maximum efficiency.

Wider-tail outlines and **Zero Vee** are designed to provide maximum power and leverage for the highest upwind and deepest downwind angles. Increased tail width over last year's 2005 Formula 159 improves angle and power.

Ultra-lightweight racing straps weighing a mere 90g dry. They are designed to absorb a minimum amount of water, saving up to a total of 400-500g.

Innovation! The **side-cuts** in the tail help increase the wetted surface's aspect ratio and allow the water that sticks to the leeward rail to release earlier. These side-cuts also make the new Formula 160 more comfortable and balanced.

Summary:

- Pure course racing machines with a class-leading heritage.
- Extremely powerful with super-early planing performance.
- Points high upwind and reaches deep downwind.
- Ultra-lightweight Wood construction.
- Innovative side-cuts improve speed and balance.
- Wider tail improves angle and power
- Wider nose trims the board higher on the water.

Specifications

Model	Volume	Length	Width	Tail	WOOD Weight +0%	Tufskin Weight +0%	Fin box	Fin	Sail size
Formula 160	160 liters	228 cm	100.5 cm	77.9cm	TBA		Deep Tuttle	Drake R13 Race 700 NR	7.5-12.5 m ²
ProKids Formula	117 liters	217 cm	93 cm	69.8 cm		TBA	Deep Tuttle	Drake R13 Race 620 NR	3.0-8.5 m ²
Formula Experience	160 liters	228 cm	100.5 cm	77.9cm		TBA	Deep Tuttle	Drake R13 Race 700 NR	7.5-12.5 m ²

TBA: Information not available at time of print. Please check our website www.star-board.com for any updated data. Dimensions and information in this catalogue may be altered without prior notice during sales season.

ACCESSORIES

Board bags

The popular Starboard board bags are sized to fit all Starboard models, from the biggest Hybrid down to the smallest ProKids board.

Innovative features:

- **New!** Clipper Wheel discs for compatibility with the Starboard's Clipper Wheel: clip the wheel on to make transporting your gear from the car park to the beach or around airport terminals a breeze!
 - Split tail design makes fitting a finned board easy.
 - Security loops: by inserting roof rack straps through the security loop, the board will remain secure in case the straps loosen while being transported on the roof of a car.
 - Stomp pad: step on the stomp pad as you insert the board into the bag to prevent the board bag from moving away from you.
 - Large reflective surface on one side helps prevent overheating inside the bag. It is not recommended however to leave the boardbag and board for prolonged periods of time under direct sunlight.
- Please refer to the separate 2006 board bag sizing chart for board model compatibility (www.star-board.com)



Clipper Wheel

The Clipper Wheel from Starboard is as its name implies, simply a large roller-wheel that clips on to the tail of virtually any board with a Tuttle box. With its large diameter wheel, the Clipper Wheel functions on all surfaces including sand. Primarily designed for the staff at windsurfing schools, the wheel clips on and off in an instant without the need for any additional tools. Being able to remove the wheel at the water's edge leaves you a clean board. For the more regular sailor, it is also convenient to have the Clipper Wheel system clipped on to your boardbag: it makes it easy to transport your full kit in one go from the garage to the car, from car park down to the water, or around the airport from one terminal to another.

- Clips on and off in an instant without tools.
- Works on sand

Roof-rack pads

- Low profile design
- Abrasion resistant reinforcement for improved durability against a board's non-slip deck



Fin bags

- Stashes up to 10 70cm fins
- Side pocket to store screw drivers and spare bolts



Tiki Tool

4 designers, 24 months' of R&D to create the best screwdriver for windsurfers:

- Wide grip design for maximum torque
- Micro-texture rubber grip that works even when wet
- Semi-rigid rubber grip for comfort + power
- Top grade CR-V chrome vanadium steel bit
- Heat treated and hardened tip
- Philips head designed to fit standard footstrap screws perfectly, with maximum contact and torque

Slick strap

- Designed for comfort and control
- Super quick size adjustment
- Exclusive top flap design does not strip open under load or when exposed to water flow
- Premium grade neoprene
- Abrasion-resistant top cover
- Slim and lightweight
- 120g dry
- Saves 200g in total per board compared to standard straps



Race strap

- Designed for minimum weight and minimum water absorption
- Size adjustment via footstrap screws only
- Premium grade neoprene
- 90g
- Saves 400g dry in total per board compared to standard straps (up to 800g when wet)



HD mast-impact protectors

To be glued on to the nose of any board with high-performance contact adhesive or cyanoacrylate (superglue), the HD mast impact protectors provide the most effective mast-impact protection at the lowest weight.

The HD mast-impact protector is built in 3 layers for maximum protection:

Layer 1: Rigid plastic disperses the impact energy over a large area

Layer 2: High density EVA backs the rigid plastic to prevent excessive deformation

Layer 3: Thick, low density EVA absorbs the impact energy

Grey/black colour combo makes it blend into most board graphics.

Please refer to the separate 2006 HD mast-impact protector sizing chart for board model compatibility (www.star-board.com)



Start Leash

The Start leash system gives beginners more confidence and the chance to be completely independent by making learning alone or without supervision safer. The leash also helps instructors by preventing students from drifting away.

One end of the leash is to be attached to a fixed object, or held by an instructor. The other end clips onto the safety leash loop fitted on the bottom of the board's centre.

- The leash, being attached to the centre of the board and not the tail, no longer interferes with the board's behaviour.
- Lead weights sink the leash around the board's active zone, preventing the fin or daggerboard from catching the leash.
- Boards with the safety leash loop insert: All Start models, all Rio models and all Starsurfer models.



Accessory bag

Contains

- All the standard metric Tuttle bolts in different lengths
- Footstrap screws
- Footstrap washers
- M4 bolts for US fin boxes
- M4 brass plates for US fin boxes
- Brass T-plates for the mast track
- Safety washers for Deep-Tuttle fin boxes
- Rubber washers for the standard Tuttle fin bolts
- Metal washers for the fin bolts
- Air-valve bolts with rubber O-Ring



Safety Washer

The smart Starboard safety washers are developed especially to protect the feet, sail and boom from fin screw heads that protrude above the deck's surface.



Mast bases & extensions

Zero extension mast base
50cm extension mast base
"North-pin to push-pin" converter
Universal joint



DREAM TEAM

We proudly support and promote more sailors around the world than ever before because we believe in windsurfing and its huge potential. From 7-year-Pro Kid Jurgen Saragoza to Brazilian Superstar Konan Lang, newcomer Sarah Quita and Formula Champion Wojtek Brozowski, we want to promote and support sailors that are creating the current and future face of the sport.

The infamous South Pacific god of wind, waves and weather, the TIKI himself, holds powers that we only can prey to.



STARBOARD WORLD CREW

Starboards world crew of hundreds of sailors from over 50 countries is the largest group of windsurfing ambassadors ever presented. These top athletes are made up of high level amateur competitors, past and present World champions, national champions and dedicated windsurfing teachers. **We thank you for all you are doing in support of windsurfing.**





Joe • Sales Manager



Genus Tiesda • Design & Shape



Chanya • Finance



Morten • Art Director & Beerhouse Manager



Trent • Marketing Manager & 1st generation Prokid



Starboard Prokids World 2005



Udo • Product design & Service & X generation Prokid



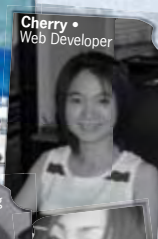
Nat • Sales coordinator



Kjell • Professor



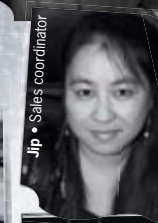
Ian • Web Support



Cherry • Web Developer



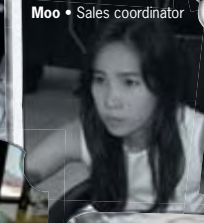
Jan • Finance



Jip • Sales coordinator



Wal • Asst. Sales Manager



Moo • Sales coordinator



Lew • Graphics



Aoy • Accounting



A • Accounting



Lei • Graphics



Jim Drake • Young Guy



Bernard • Video



BIG Kold • Art Director & XO-man



Berm • Race Driver & Xman



Pen • Housekeeper



Ton • Logistics



Andrea • Video



Yui • New Accounting



Henk • Communication & Video



Bin • Logistics



Oan • Housekeeper



John • Photographer



Yui • New Accounting

STARBOARD SERVES

Lake taco, Thailand:

4 people moved into an oversized office in the year 2000, today a growing team of nearly 40 people from over 10 nations work together to develop Starboard and its extensive services. The Starboard design and development center is located next to the central office ensuring only a short step from idea to prototype. Selected world wide Starboard OEM suppliers insure that the highest quality is available on time creating over 700 annual work places. Naklua Bay, our main test location, is a one hour ride South of the Bangkok new International Airport. There a on location work shop allows for immediate refinements of the most promising test boards. Most high wind gear is tested in Western Australia's diverse coastal conditions. Our Maui team gives final "thumbs up" on performance after cross checking with their side shore wave conditions. Our goal is to continue bringing the best possible gear into the hands of sailors world wide and deliver a personal service and follow up for everyone that rides with us.

WORLD NETWORK

Corporate head quarters
Natural Corporation
 Offshore Chambers
 P.O. Box 217, Apia, Samoa
Representative office (Thailand)
 Ph : 662-3168096
 Fax : 662-3168097
e-mail: info@star-board.com

Argentina
Hard Wind
 Ph: 54 11 4792 1133
 Fax: 54 11 4733 3796
e-mail: info@hardwind.com

Aruba
Fiberworks Inc.
 Ph: 297 5866654
 Fax: 297 5861838
e-mail: theboardwalk@setarnet.aw

Australia
Auswind
 Ph: 618 92444446
 Fax: 618 92444448
e-mail: sales@auswind.com.au

Austria
Sport Schneider
 Ph: 43 2177 2855
 Fax: 43 2167 2088
e-mail: office@sport-schneider.com

Bahamas
Mid-Ocean Holding Ltd.
 Ph: 242 502 8879
 Fax: 242 502 8840
e-mail: drichardson@oceanic.bs

Belgium
Starboard Belgium
 Ph: 32 3 353 9507
 Fax: 32 3 353 9507
e-mail: info@starboard.be

Bonaire
BonaireWindsurf Place
 Ph: 599 7172288
 Fax: 599 7175279
e-mail: theplace@telbonet.an

Brazil
Katanka Ltd.
 Ph: 5561 99745490
 Fax: 5561 3676782
e-mail: katanka@katanka.com.br

Bulgaria
Extreme Sports Club
 Ph: 359 8 88509000
 Fax: 359 8 86509000
e-mail: german@bgwa.org

Canada
Trident Performance Sports Inc.,
 Ph: 604 929 9626
 Fax: 604 929 4955
e-mail: info@tridentsports.com

Central Europe
APM Marketing GmbH
 Ph: 49 89 89511170
 Fax: 49 89 89511172
e-mail: team@apm-marketing.de

Chile
Windsurfing Chile
 Ph: 562 211 1959
 Fax: 562 211 5735
e-mail: info@windsurfingchile.com

China & Macau
Gastra International Group Ltd.
 Ph: 86 755 2739 4646
 Fax: 86 755 2739 7491
e-mail: ronnie@gastra.cn

Colombia
Representaciones Tametco
 Ph: 572 4485153
 Fax: 572 4422718
e-mail: tametco-lds@andinet.com

Croatia
Spin Sport d.o.o.
 Ph: 385 1 2303 079
 Fax: 385 1 2303 079
e-mail: marin@spinsport.biz.hr

Cyprus
WindsurfingCenter
 Ph: 357 2535 2695
 Fax: 357 2535 8898
e-mail: m.makedonas@cytanet.com.cy

CzechRepublic
Patrik Hrdina
 Ph: 420 608949988
 Fax: 420 257327125
e-mail: p.hrdin@volny.cz

Denmark
Nautic Surf & Ski
 Ph: 45 97 122 965
 Fax: 45 97 122 412
e-mail: herring@nautic-surfogski.dk

Denmark
Starboard Denmark
 Ph: 45 3322 8819
e-mail: peter@starboard.dk

Dominican Republic
Vela / Spinout / Dare2fly
 Ph: 1 809 571 0805
 Fax: 1 809 571 0856
e-mail: info@velacabarete.com

Ecuador
Viento y Mar S.A.
 Ph: 5937 2938101
 Fax: 1 209 856 4201
e-mail: viento_y_mar@yahoo.com

Egypt
Baby Fish
 Ph: + 2 069 364 1074
 Fax: + 2 012 756 8358
e-mail: info@go-dahab.ru

Estonia
Extreme Sport Ltd.
 Ph: +372 606 2202
 Fax: +372 606 2201
e-mail: info@extreme.ee

Finland
Extremeshop
 Ph: 358 44 0436714
 Fax: 358 2 4367135
e-mail: as@extremeshop.net

France
Hi-Tech SAS
 Ph: 33 5 46 44 42 23
 Fax: 33 5 46 44 84 98
e-mail: contact@hitech-sails.com

Germany
APM Marketing GmbH
 Ph: 49 89 89511170
 Fax: 49 89 89511172
e-mail: team@apm-marketing.de

Greece
Sportop
 Ph: 30 210 94 03 288 / 30 210 94 04 411
 Fax: 30 210 93 55 174 / 30 210 94 04 411
e-mail: sportop@otenet.gr

Hong Kong
X Game-Wind N'Surf Ltd.
 Ph: 852 2366 9293
 Fax: 852 2366 3671
e-mail: info@xgamehk.com

Hungary
Hi-Surf Ltd.
 Ph: 36 1 214 9054
 Fax: 36 1 214 9054
e-mail: hisurf@axelero.hu

India
Wild Ventures
 Ph: 91 11 26868614, 51756619
 Fax: 91 11 26862433
e-mail: wildventures@touchtelindia.net

Indonesia
Mana Mana Singapore Private Ltd.
 Ph: 65 63398878
 Fax: 65 63397812
e-mail: eres.resorts@pacific.net.sg

Ireland
Wind & Wave
 Ph: 353 1 28441775
 Fax: 353 1 2844855
e-mail: denisek@eirlink.ie

Israel
Freegull Sea Sports LTD
 Ph: 972 4 6270831
 Fax: 972 4 6372749
e-mail: freegull@wind.co.il

Italy
Linkdistribution srl
 Ph: 39 0362 337568
 Fax: 39 0362 620853
e-mail: linksnow@tin.it

Japan
Maneuverline Inc.
 Ph: 81 3 5245 3113
 Fax: 81 3 5245 3114
e-mail: osaka@maneuverline.co.jp

Kaliningrad
Starboard Kaliningrad
 Ph: 7 0112 220197
 Fax: 7 0112469590
e-mail: sur@sars.koenig.su

Korea
Starboard Korea Inc.
 Ph: 82 52 257 5239
 Fax: 82 52 970 0909
e-mail: starboardkorea@yahoo.co.kr

Latvia
Baltwest SIA
 Ph: 371 707 4854
 Fax: 371 737 4853
e-mail: ansis@baltwest.lv, juris@baltwest.lv

Lithuania
Linkosas
 Ph: 370 37 763909 / 370 685 11895
 Fax: 370 37 312825
e-mail: info@bures.lt

Lebanon
Sunrise Sports
 Ph: 9611 865768
 Fax: 9611 865768
e-mail: sunrise@cyberia.net.lb

Malaysia
Ballz Action Sport Mart Sdn.Bhd.
 Ph: 603 22 848 928
 Fax: 603 22 848 908
e-mail: info@ballzaction.com

Maldives
Ocean Splash
 Ph: 960 326309
 Fax: 960 330884
e-mail: watersports@innermaldives.com

Martinique
Windsurf shop SAS Martinique
 Ph: 596 696 261687
 Fax: 596 596 787778
e-mail: r.vila.f@wanadoo.fr

Mexico
The Wind Adventure
 Ph: 044 55 54554720
e-mail: infomex@wind-adventure.com

New Caledonia
Planet Reef
 Ph: 687 253282, 687 791216
 Fax: 687 253282
e-mail: planetreef@canl.nc

New Zealand
Wild Windsurf
 Ph/Fax: 64 9 527 8300
e-mail: tnwild@xtra.co.nz

Norway
Outdoor Trading
 Ph: 47 37010061
 Fax: 47 37030169
e-mail: post@outdoortrading.no

Norway
Seasport Import AS
 Ph: 47 2283 7928
 Fax: 47 2283 9295
e-mail: kundeservice@seasport.no

Peru
The Wind Adventure
 Ph: 9 822 7523
 Ph/Fax: 511 4617695
e-mail: info@wind-adventure.com

Poland
Surf Seven Sport
 Ph: 48 226161147
 Fax: 48 226170341
e-mail: piotr@surf.pl

Portugal
Windsurf Point Lda
 Ph: 351-282792315
 Fax: 351-282792316
e-mail: info@windsurfpont.com

Philippines
Starboard Philippines Inc
 Ph: 632 8384301 ext 3750-52
 Fax: 632 8392127
e-mail: starboard@pacific.net.ph

Puerto Rico
Velauno
 Ph: 787-982-0543
 Fax: 770-818-5553
e-mail: jaim@velauno.com

Russia
Olympica-Sportland Co
 Ph: 7 095 780-5376
 Fax: 7 095 780-5376
e-mail: info@sportland.ru

Russia
Olympica-Sportland Co
 Ph: 7 095 780-5376
 Fax: 7 095 780-5376
e-mail: info@sportland.ru

Saudi Arabia, Qatar and UAE
Shamal Sport
e-mail: shamalsport@yahoo.com

Singapore
Bluefinz Sports PTE LTD.
 Ph: 65 6542 3154
 Fax: 65 6546 2589
e-mail: info@bluefinz.com

Slovenia
Vidax d.o.o.
 Ph: 386 2 4295100
 Fax: 386 2 4295101
e-mail: vidax@siol.net

South Africa
Joluka (Pty) Ltd.
 Ph: 27 11 608 0185
 Fax: 27 11 608 0184
e-mail: gunter@joluka.co.za

Spain
G.B.T. - 3 Distribuciones S.L.
 Ph: 34 91 6516636
 Fax: 34 91 6512516
e-mail: gbt3@telefonica.net

Sweden
Onwater AB
 Ph: 46 54 850560
 Fax: 46 54 807802
e-mail: info@onwater.se

Switzerland
Ryf's Surf & Fun
 Ph: 41 41 2100391
 Fax: 41 41 2100891
e-mail: info@surfun.ch

Tahiti
Concept Espace
 Ph: 689 506435
 Fax: 689 506436
e-mail: conceptespace@yahoo.fr

Taiwan
Liquid Sports
 Ph: 886 926788204
 Fax: 886 69260361
e-mail: penghub@ms33.hinet.net

The Netherlands
Fox Sports
 Ph: 31 50 3110845
 Fax: 31 50 3137393
e-mail: info@fox-sports.nl

Turkey
Ayperm Sports
 Ph: 90 2423225166-77
 Fax: 90 2423222675
e-mail: info@ayperm.com

Thailand
Amara Windsurfing
 Ph: 66 1862 9958
 Fax: 66 382 33276
e-mail: am@windsurfing-thailand.com

Ukraine
Extreme Ltd.
 Ph: 380 44 2391510
 Fax: 380 44 4637943
e-mail: extreme@extremes.com.au

United Kingdom
Tushingham Sails Ltd
 Ph: 44 1803 712140
 Fax: 44 1803 712141
e-mail: windsurfing@tushingham.com

USA
Sky Hi USA
 Ph: 808 871 2723
 Fax: 808 871 2144
e-mail: info@skyhiusa.com

Vietnam
Full Moon Resort
 Ph: 84 62 847 405
 Fax: 84 62 847 160
e-mail: fullmoon@windsurf-vietnam.com



Explore the world the **Starboard** way

We have over the years selected a fine collection of resorts and clubs around the world to expand our services. In these centers you will be able to learn to windsurf, test ride our high end boards and experience the world of windsurfing the Starboard way. Please check it all out and get ready for the holiday you deserve.

Vela Windsurfer Center

Aruba, Dutch Antilles
Baja, Mexico
Cabarete, Dominican Republic
Margarita, Venezuela
Jericocoara, Brazil
www.velawindsurf.com

Sunsail

Club Galini, Greece
Club Vounaki, Greece
Club Leda, Greece
Club Marverde, Turkey
Club Javelin, Turkey
Club Perili, Turkey
Club Colonna, Antigua
www.sunsail.com

Markwarner

San Lucianu, Corsica France
Abamar, Sardinia Italy
Lakitira, Greece
Lemnos, Greece
Paleros, Greece
San Agostino, Greece
Palm Beach, Turkey
Abu Soma, Egypt
www.markwarner.co.uk

Neilson

Grenada, Caribbean
Nidri, Greece
Porto Heli, Greece
Finikounda, Greece
Vassiliki, Greece
Bitez, Turkey
Lumbarda, Croatia
www.neilson.co.uk

Clubvass

Vassiliki, Greece
www.clubvass.com

Surfcenter Lido Blu

Torbole Sul, Lake Garda, Italy
www.surflb.com

Angulo

Cape Verde Islands
www.angulocaboverde.com

Natural-Windsurfing, France

www.natural-windsurfing.com

Deskado Prasonisi, Greece

www.windsurfing-prasonisi.com

Flisvos Sport Club, Greece

www.flisvos-sportclub.com

Surfers Paradise, Rhodes, Greece

www.surfersparadise.gr

Hawaiian Watersports, Hawaii, USA

www.HawaiianWatersports.com

Mana Mana Beach Club, Indonesia

www.manamana.com

Caesarea Windsurfing and Sailing club, Israel

www.wind.co.il

Gargano Surf'n'Sail Center, Italy

www.garganosurf.com

Werners Hot Spot, Lancelin, Australia

windslanc@hotmail.com

Amara Sailing Center (A.S.C.),

Jomthien, Thailand
www.windsurfing-thailand.com

Jibe's, Vietnam

www.windsurf-vietnam.com

Surf Center Bahia Feliz,

Gran Canary, Spain
www.club-mistral.com

Kanaha Kai Surf Center,

Maui, Hawaii, USA
hot@hotsailsmaui.com



HYBRID FORMULA Fast forward + more

The Hybrid Formula is a modern, Formula-style planing board with integrated design features that also make it fast, competitive, and powerful in sub-planing conditions.

With a large daggerboard, biting boxy rails and a low, squared-out nose, the Hybrid Formula board is designed to plane up early and power upwind, giving it maximum edge in racing conditions.

The Hybrid Formula will appeal to an extremely wide range of people. Above all, for racers who compete in Hybrid events, it is race-legal in many classes such as the Hybrid Experience and Raceboard classes. It will also appeal to those looking for high levels of racing performance in planing winds, yet also performance in sub-planing conditions. You can go windsurfing in lighter winds than ever!

For those who sail in non-planing conditions around lakes, harbors and rivers the World over, the Hybrid Formula is a lake cruiser that performs like a modern planing board once the wind picks up.

The **Low, square nose** makes the board faster in non-planing by pushing the water under the board instead of inefficiently around and over the deck. The square nose also allows for a much lower and, therefore, more efficient rocker than a round nose.

The French windsurfing federation has with great results tested the double concaved Hybrid Race and the "ducktailed" Hybrid Formula. At the time this catalogue goes to print we are waiting for their official statement concerning their choices for the Youth class. We hope for a selection of 5 designs from different brands. The French federation normally has lead the way in Olympic windsurfing. This Youth movement may even materialize into a racing concept for the 2012 London Games, indicating a shift away from one design concepts already in 2009.

The slender **Hybrid RACE** is at 77 cm width and 286 length the lower wind candidate.

The wider **Hybrid Formula** with "ducktail" is the more planing oriented shape.



Hybrid Formula summary:

- Modern, light feeling, Formula-type planing performance.
- Early planing.
- Fast and powerful upwind with the daggerboard down.
- Stable – suitable for learning and progressing or as a family summer board.

Hybrid Carve summary:

- Modern, light-feeling, freeride planing performance.
- Smooth and fun in non-planing mode.
- Stable and comfortable for learning and progressing.
- A great family summer board.

Specifications

Model	Volume	Length	Width	Tail	WOOD Weight +5%	DRAM Weight +5%	Tufskin Weight +5%	Fin box	Fin size	Sail size
Hybrid Race	TBA	286	77cm	TBA	TBA	TBA	TBA	Deep Tuttle + Clipperbox	TBA	6.0-10.0 m ²
Hybrid Formula	TBA	293	82cm	TBA	TBA	TBA	TBA	Deep Tuttle + Clipperbox	TBA	6.0-10.0 m ²
Hybrid Carve	TBA	263 cm / 288 cm *	82cm	55.0 cm	TBA	TBA	TBA	Deep Tuttle + Clipperbox	Drake Freeride Drive 480 + Freeride daggerboard	3.0-10.0 m ²

*The duck tail system changes the effective length of the board between planing and non-planing. TBA: Information not available at time of print. Please check our website www.star-board.com for any updated data. Dimensions and information in this catalogue may be altered without prior notice during sales season.

HYBRID CARVE

Back to the future, with a bonus.

Tiesda You

Boxy rails for added volume, stability, and rail bite.

Fixed-mast track makes the board user friendly. Since the duck tail automatically adjusts waterline length between planing and non-planing modes, the track no longer needs to be adjustable to achieve maximum performance.

Large daggerboard.

Main planing section of the hull is **designed around the Carve** freeride board.

Revolutionary **duck tail** reduces drag and increases waterline length in non-planing mode and then clears the water when planing. The board's dynamic length once planing thus becomes as short as a conventional modern planing board, eliminating the feel of sailing an extra-big board with a heavy nose.

Large padded area for comfort.

Multiple footstrap positions.

Heavily domed deck for comfort.

Thin rails for improved jibing and grip.

You like to explore the light wind areas in lakes, rivers, and harbours, yet you enjoy the feel of a modern freeride board when the wind picks up...

The Hybrid Carve is a modern wide-style planing board with integrated design features that also make it fast and fun in sub-planing conditions:

a large daggerboard, a drag-reducing duck tail, and a low, square nose. The Hybrid Carve will appeal to a wider range of people than any other board. A beginner can learn on it thanks to the width, the daggerboard system, and the stability. A high-performance or progressing sailor will find the freeride performance and jibing qualities equal to that of a Carve 162 - but with the ability to cruise in light winds too! The long-forgotten casual windsurfer now has a modern upgrade that is also great to teach others on.