



NOT JUST BETTER DIFFERENT



**WINDSURFING
PRODUCT
GUIDE
2016**



FABIEN VOLLENWEIDER

ABOUT FABIEN

In 1990, Fabien Vollenweider flew to Maui from Marseilles. He was a young French windsurfer with the dream of shaping boards. A year later, in March 1991, that windsurfer, Fabien Vollenweider, shaped the first Tabou board.

24 years later, that same board—a custom, asymmetric made for Ho'okipa—hangs over the Tabou shaping room in Marseilles. Below that board, Fabien still designs every Tabou board. Tabou is no longer a small company, and alongside R&D manager Cedric Bordes, Fabien shapes boards for every rider and all conditions of windsurfing. The Tabou team includes some of the best windsurfers in the world, and they work with Fabien to develop new concepts and designs. Fabien's innovations helped team rider Thomas Traversa win the 2015 PWA Wave world title.

One thing has not changed over past 2 decades: Fabien's passion for windsurfing. Fabien designs and tests new boards from Monday to Sunday. The goal: "not just better, but different."

After Fabien designs a new board, the prototypes go to the team for testing under the management of Cedric Bordes. Meanwhile, Axel Weckermann creates the artwork for the boards. Nothing goes into production until the team is completely happy.

The design process works in two-year cycles. This means that every shape is tried and tested for at least 2 years before being released to the public, guaranteeing that when any windsurfer (pro or normal) sets foot on a Tabou, he will feel the difference no matter who he is.

Every board responds to what the rider wants. And Tabou makes boards for every rider—from a full-time professional to a kid just learning. And, the use of high-tech materials means that the boards will last long no matter where you windsurf.

We invite you to join our tribe, a group of motivated warriors chasing the wind!

TABOU BOARDS



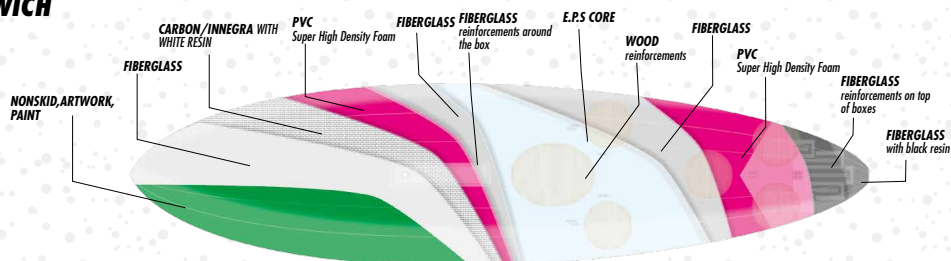
**NOT JUST BETTER
DIFFERENT**



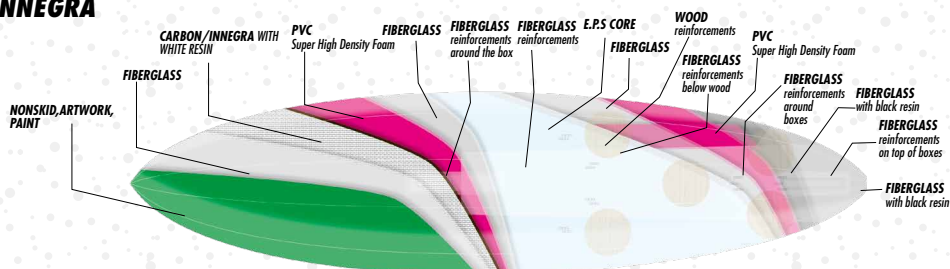
CONSTRUCTION

ALL ABOUT THE TABOU CONSTRUCTION

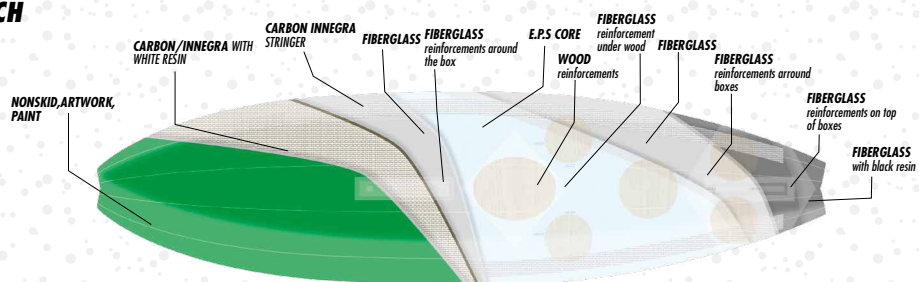
WAVE FLEXLIGHT CARBON/ INNEGRA SANDWICH



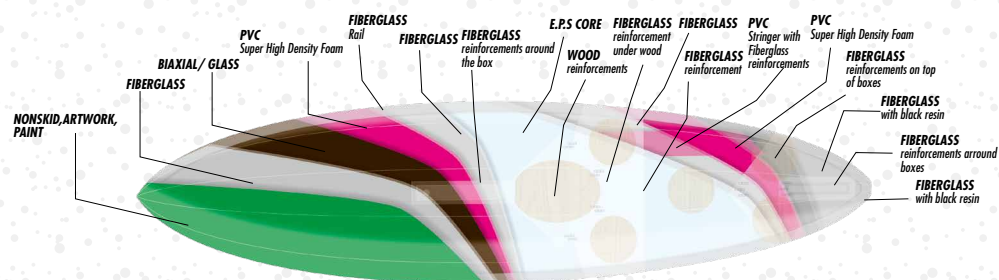
3S CARBON INNEGRA SANDWICH



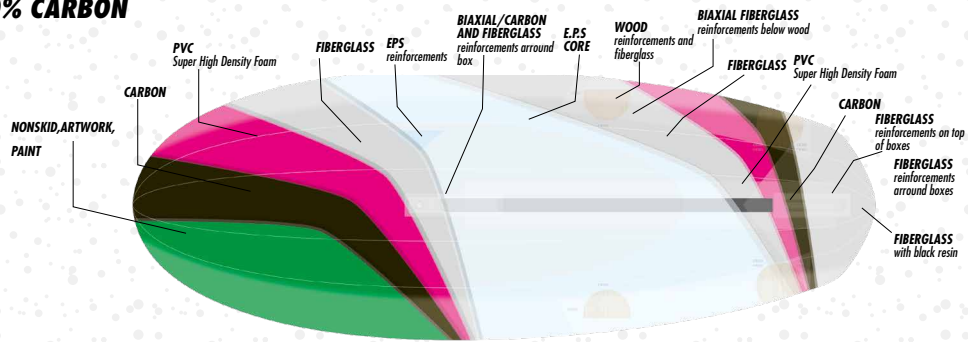
FS CARBON INNEGRA SANDWICH



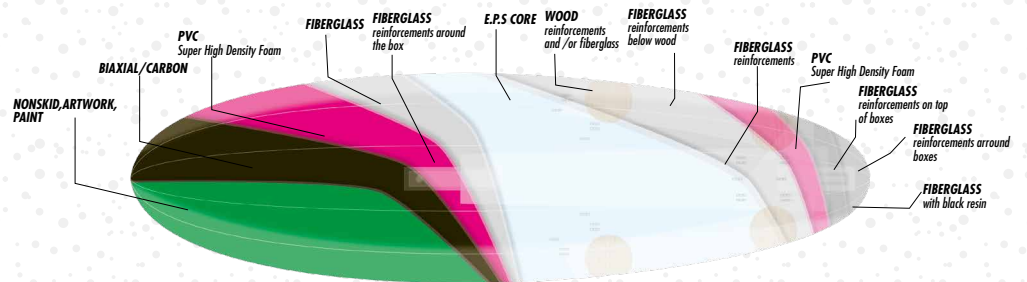
PVC FULL SANDWICH HD



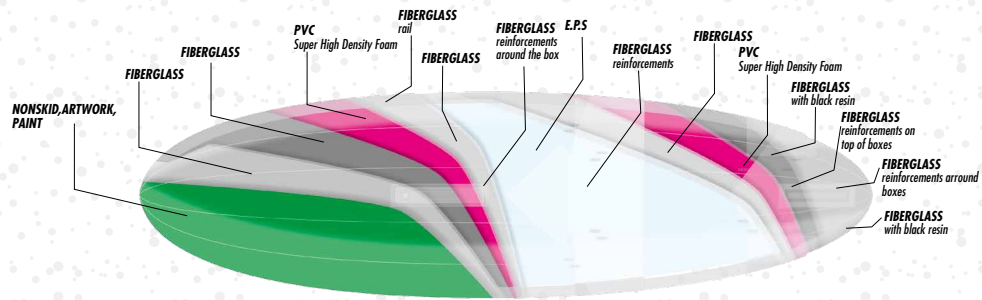
100% CARBON



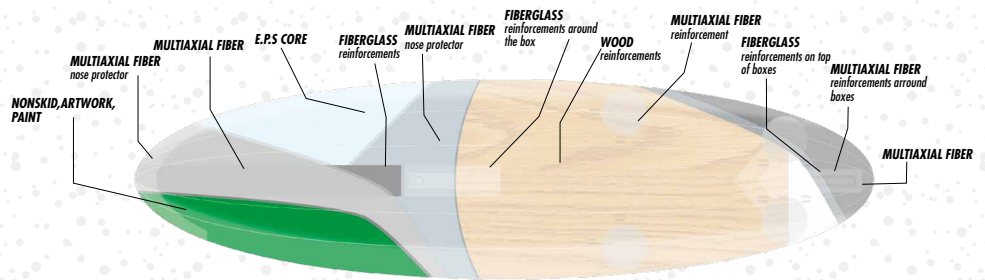
CARBON BIAx SANDWICH



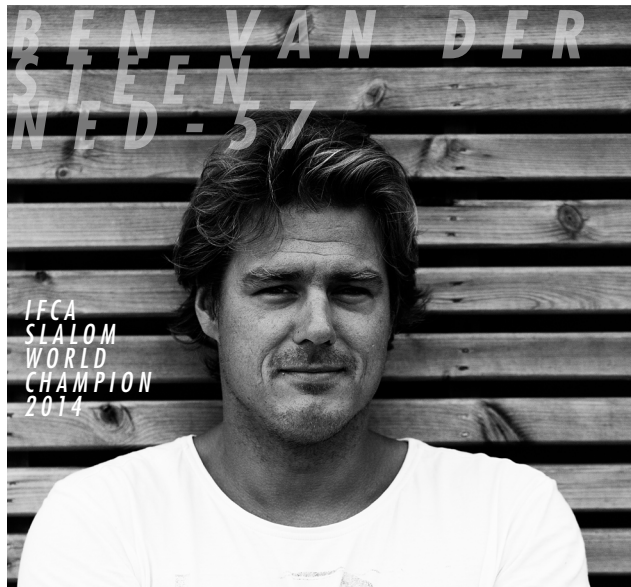
PVC FULL SANDWICH



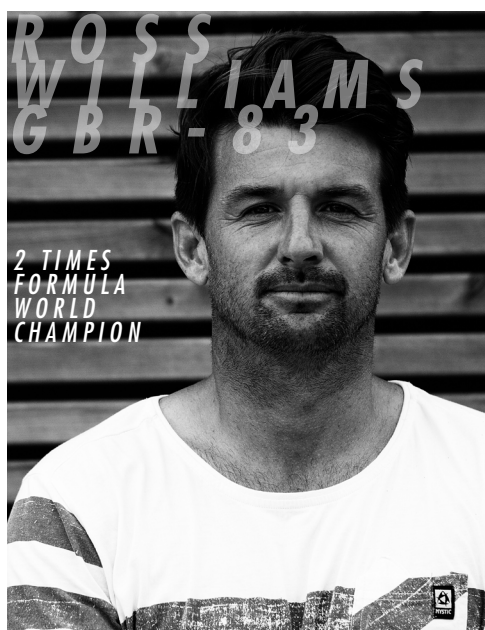
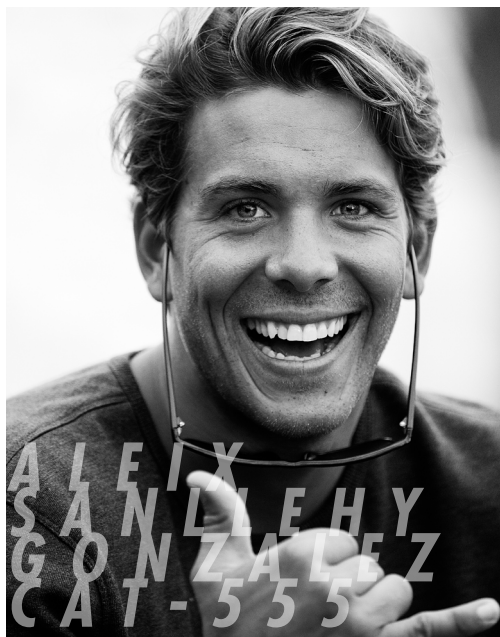
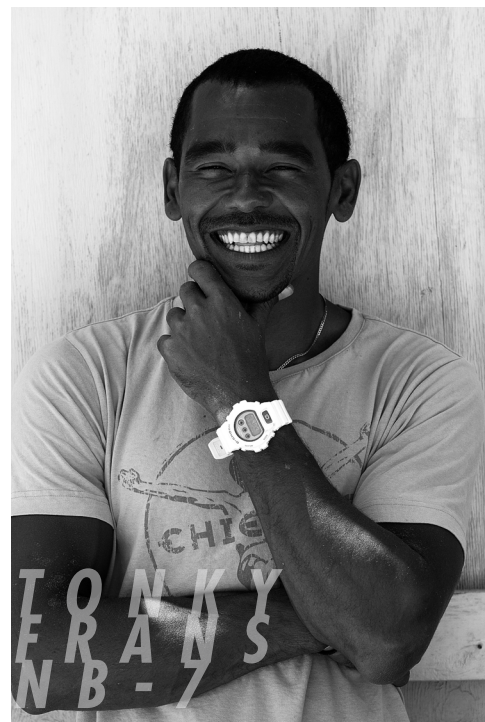
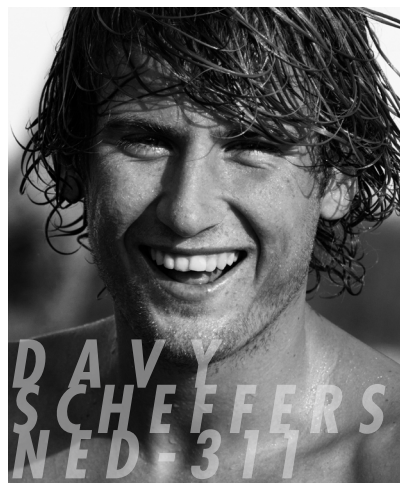
AST



I N T E R N A T I O N A L TEAM TABOU-BOARDS 2



^A
^L
2016



**NOT JUST BETTER
DIFFERENT**



**NOT JUST BETTER
DIFFERENT**

TABOU

SURFBOARDS



QUALITY & COMFORT

DA
QUAD
STAR

DA CURVE

QUADSTER

2016



CONSTRUCTION

WAVE FLEXLIGHT
CARBON/ INNEGRA
SANDWICH

1. FAST CARVING
2. EARLY PLANING & GOOD UPWIND PERFORMANCE TO CATCH MORE WAVES
3. BOARD FOR EVERY TYPE OF WAVE CONDITION



THOMAS TRAVERS

DA CURVE



GRAHAM

EZZY POCKET

★ DA CURVE 75

WIDTH 55cm

LENGTH 226cm

FINS 2xCarver 10cm/1xZinger 15cm
2x slot base plastic plug 13cm

SAIL 3.5 -5.2

★ DA CURVE 80

WIDTH 56.5cm

LENGTH 228cm

FINS 2xCarver 10cm/1xZinger 16cm
2x slot base plastic plug 13cm

SAIL 3.7 -5.7

★ DA CURVE 86

WIDTH 57.5cm

LENGTH 230cm

FINS 2xCarver 11cm/1xZinger 17cm
2x slot base plastic plug 13cm

SAIL 4.2 -6.1

DA CURVE 96

WIDTH 59cm

LENGTH 230cm

FINS 2xCarver 11cm/1xZinger 18cm
2x slot base plastic plug 13cm

SAIL 4.5 -6.2



D A CURVE / THOMAS TRAVERSA

What's new

CAD design double flat-rocker-line:

- generate more speed when carving
- more radical bottom turns and cutbacks
- easier jibing
- quicker to plane in a straight line

Bottom shape with light V and a double concave:

- Fast rail to rail transition
- More grip when turning to make carving easier
- works in both down-the-line and on-shore waves
- both carves and slides

Outline with the wide-point moved farther back and wider at the front foot-strap:

- more power in messy surf or in the flat of the wave
- allows the board to work with bigger sails
- goes upwind more easily
- jumps higher

DA CURVE

ABOUT THE BOARD



Last year, Thomas Traversa dreamed of competing on the World Tour with just 1 board. He asked Fabien to make a prototype DaCurve that was faster in the surf and more adaptable to different kinds of waves so he could use it in both Europe and Hawaii.

To make this board, Fabien had to start a new design from scratch: a new rocker, new outline, new bottom shape, new deck, and a completely new board.

The result? Thomas became Wave World Champion on that prototype. And, this board inspired the 2016 DaCurve.

Thomas says: "I won the World Title on a magic board. With this DaCurve, I could surf in Denmark or Hawaii with the same power and comfort. In the end, I did not have to think about my board. It just worked, and I could relax and focus on the wave."

We sent these shapes to Maui after the Hawaiian wave-specialist Graham Ezzy joined the Tabou family. Graham sent us back videos and pictures of fast carving turns on the new DaCurve.

Graham reports: "These boards are so fast! I catch more waves because I can plane even when the wind is light. And on the Hookipa waves, the boards accelerate through the turns. This means I can do higher aerals, and more tweaked aerals because I have more time in the air. I can throw more spray, too. And the best part is that I can do more turns on a wave because the board is so fast and responsive."

The 2016 DaCurve is the wave sailor's main weapon, and the board that won the 2014 PWA Wave World Title with Thomas Traversa. Faster in the turns, the board comes alive in down-the-line surf. Quicker going straight and more versatile, the board carves hard even when the wind is onshore.

Fuller Rail:

- easier to do freestyle tricks and new-school wave moves
- cuts through chop when carving
- goes upwind more easily

Flatter deck:

- more stable
- more direct drive from feet

Carver side fins:

- Extra fast carves with the Thruster set-up our teamriders love
- Delivered with a Thruster setting
- Can be converted to Quad (5 boxes)

OTHER FEATURES:

- The extra-wide footstrap positions for a surfy feel and more control over the board.
- Slot box: lighter weight and less drag.
- FlexLight Carbon/Innegra
- "The Da Curve is one board for all conditions. Thomas won the World Title on this board in Europe and Hawaii."
- The new Da Curve carves fast in any kind wave: from 1m mush to double-mast Hawaii.

POCKET POWER WAVE

POCKET

POWER WAVE

2016



CONSTRUCTION

**WAVE FLEXLIGHT
CARBON/INNEGRA
SANDWICH**

1. **SUPER EARLY PLANNING**
2. **HIGH END TOPSPEED**
3. **EASY TO CONTROL**

ROSS WILLIAMS POCKET



POCKET 69

WIDTH 56cm

LENGTH 224cm

FINS 1xZinger 15cm/2xZinger 9cm
2x slot base plastic plug 13cm

SAIL 3.0 -5.0

POCKET 78

WIDTH 58cm

LENGTH 228cm

FINS 1xZinger 16cm/2xZinger 10cm
2x slot base plastic plug 13cm

SAIL 3.5 -5.2

POCKET 86

WIDTH 59.5cm

LENGTH 229cm

FFINS 1xZinger 17cm/2xZinger 11cm
2x slot base plastic plug 13cm

SAIL 3.7 -5.7

POCKET 94

WIDTH 61cm

LENGTH 233cm

FINS 1xZinger 18cm/2xZinger 11cm
2x slot base plastic plug 13cm

SAIL 4.2 -6.1

POCKET 102

WIDTH 62cm

LENGTH 236cm

FINS 1xZinger 18cm/2xZinger 11cm
2x slot base plastic plug 13cm

SAIL 4.5 -6.4



DA CURVE | ALEIX SANLLEHY GONZALEZ

Double winger swallowtail

- allows for a wider center area to improve acceleration while still having a narrow tail for loose turns
- keeps speed on the flat of the wave
- gives the rider more control

Forward fin positions

- make the the board easier to turn

Full rail

- better for sailing upwind
- more forgiving in the surf

Slot box

- lighter
- less drag



POCKET

ABOUT THE BOARD

The Pocket Wave is your "hidden joker". This range of Pocket boards will bring the best out of anyone's sailing, no matter their level. Forgiving yet responsive, this board offers security to push you to your limits even in the most challenging conditions. Easy and early to plane, the Pocket gets you up and going through the waves, allowing you to pick the ramp of your choosing and fly into the air with solid pop. The compact outline delivers excellent control in the jumps. On the wave, the rocker-line and outline ensure smooth bottom turns with excellent drive for either front or back foot turning. The thruster setup offers a surfy feel with slashy turns, and you have the option to ride a single fin if you want more drive for flat water blasting or bump and jumping on the river swells!

POCKET | GRAHAM EZZY



**NOT JUST BETTER
DIFFERENT**

TABOU

SURFBOARDS



QUALITY & COMFORT

D
 O
 N
 O
 T
 F
 O
 R
 G
 E
 T
 T
 H
 E



MATT PRITCHARD 3S CED

ROSS WILLIAMS HAWAII I ROCKET CED



ALEX SANLLENH GONZALEZ 3S CED

3S 76 LTD/CED

WIDTH 57cm

LENGTH 232cm

FINS X-RIDE 23cm

SAIL 3.3 -5.7



3S 86 LTD/CED

WIDTH 59.5cm

LENGTH 230cm

FINS X-RIDE 25.5cm

SAIL 3.7 -6.1

3S 96 LTD/CED

WIDTH 61cm

LENGTH 239cm

FINS Freeride 28cm

SAIL 4.2 -6.6

3S 106 LTD/CED

WIDTH 64.5cm

LENGTH 240cm

FINS Freeride 32cm

SAIL 4.5 -7.0

3S 116 LTD/CED

WIDTH 66cm

LENGTH 242cm

FINS Freeride 34cm

SAIL 4.7 -7.4



WAVE FREERIDE FREESTYLE

3 STYLE

WAVE
FREERIDE
FREESTYLE

2016



CONSTRUCTION
3S CARBON INNEGRA
SANDWICH LTD

PVC FULL SANDWICH HD
CED



1. FREERIDE, WAVE AND FREESTYLE ALL IN ONE
2. EASY JUMPING, ACCELERATION AND UNBEATABLE CONTROL
3. FAST AND EARLY PLANING

3S LTD / CED ABOUT THE BOARD

Compact for better turning; a 'Jack of all trades', Swiss army knife.

No matter what kind of conditions you find, with a 3S board you are always right. Jump on, sheet in, and the fun begins. These shapes make windsurfing more easy, whether small waves or flatwater, big jumps, tight turns, and all-around speed give this board the magic! Classic freestyle moves are fun to learn on the 3S shapes. A variety of strap positions allow you to adjust for speed or bump and jump turny fun! New for 2016, the 86 liter version received some updates giving it the double tail cutout just like it's bigger brothers. This range has never been better- One board - endless possibilities.

For these boards we continue to utilize the double step tail cutout that gives ultimate speed and incredible maneuverability. In a straight line you get the advantage of less wetted surface giving you a higher top speed. When on a wave, when you force water to go on those two steps it works like a kick tail, allowing the board to turn on a much tighter radius. In the end we fine tuned the rocker-line to free the board up even more. Then we also changed the bottom shape to get more power in marginal conditions. All this, together with a new outline, help achieve more stability and better turning. The 3S raises the bar and will take you to a new level of windsurfing.

ROSS WILLIAMS

"The 3S is the one board that I will always take with me on the road around the UK. The conditions can be so different from day to day but I know I can still always go for a sail on a 3S and have a great sail. Whatever style of sailing I choose to do, the 3S is there to support my demands."

If you are a first-time jibe master or jumper, or a heavier wave riding warrior, the 3S boards make everyone happy. Fun, easy, fast and friendly, you will be impressed in all conditions!





This range covers any rider looking to have fun on the water. Available in 76, 86, 96, 106 and 116 liter sizes.

- *The double tail cutout gives better top speed and acceleration, shorter radius turns and more versatility.*
- *Winger swallow tail outline provides a perfect blend of power for planing and surface distribution for speed and versatility.*
- *CAD optimized mega-smooth rocker for planing, speed and versatility.*
- *Unique bottom shape: more power in marginal conditions and more control in high winds.*
- *Perfect outline: more stable in the turns; better acceleration.*

All shapes are available in the ultra light and extremely rigid LTD construction. This gives a significant increase in performance. The boards glide earlier and respond more directly.



**NOT JUST BETTER
DIFFERENT**

TABOU

SURFBOARDS



QUALITY & COMFORT

DOWN

TWISTER

F R E E S T Y L E



CONSTRUCTION

**FS CARBON INNEGRA
SANDWICH**

1. **THINNER FOR MORE CONTROL**
2. **OUTLINE AND ROCKER FOR MAX POP**
3. **STRAIGHT ROCKER FOR EARLY PLANING & ACCELERATION**





ALEX
SANCHEZ
GONZALEZ TWISTER



TWISTER 80

WIDTH 58cm

LENGTH 230cm

FINS Sashimi II 17

SAIL 4.0 - 6.0

TWISTER 90

WIDTH 61cm

LENGTH 228cm

FINS Sashimi II 18

SAIL 4.5 - 6.5

TWISTER 100

WIDTH 64cm

LENGTH 228cm

FINS Sashimi II 19

SAIL 4.5 - 7.4

★ TWISTER 107

WIDTH 64.5cm

LENGTH 228cm

FINS Sashimi II 19

SAIL 4.5 - 7.8

TWISTER | ALEIX SANLLEHY GONZALEZ

A thin board allows the rider to sail closer to the water.

- *tail kick: more POP.*
- *Super winger pintail: more POP, higher top speed.*
- *Thin board: more control, closer to the water.*
- *Full rail: forgiveness in spinning moves.*



TWISTER

ABOUT THE BOARD

King of Kings!

Our freestyle team riders want an easy board with plenty of pop. Fabien developed the rocker, outline, and rail of the Twister to move fast, hop high, and spin smooth while providing the "close to the water feeling" that Anthony Ruenes says he needs to feel comfortable. The goal is a board that feels like part of your body.

Freestyle windsurfing is all about creativity when reacting to the wind and water. The Twister boards give every rider the chance to stop thinking about the board to focus on landing new moves.

New for 2016 is a Twister 107 taking the best aspects of the Twister 90 and 100 but with more volume. The Twister 107 is perfect for heavier riders and for super light wind.

Shape details:

"We want control and POP!"

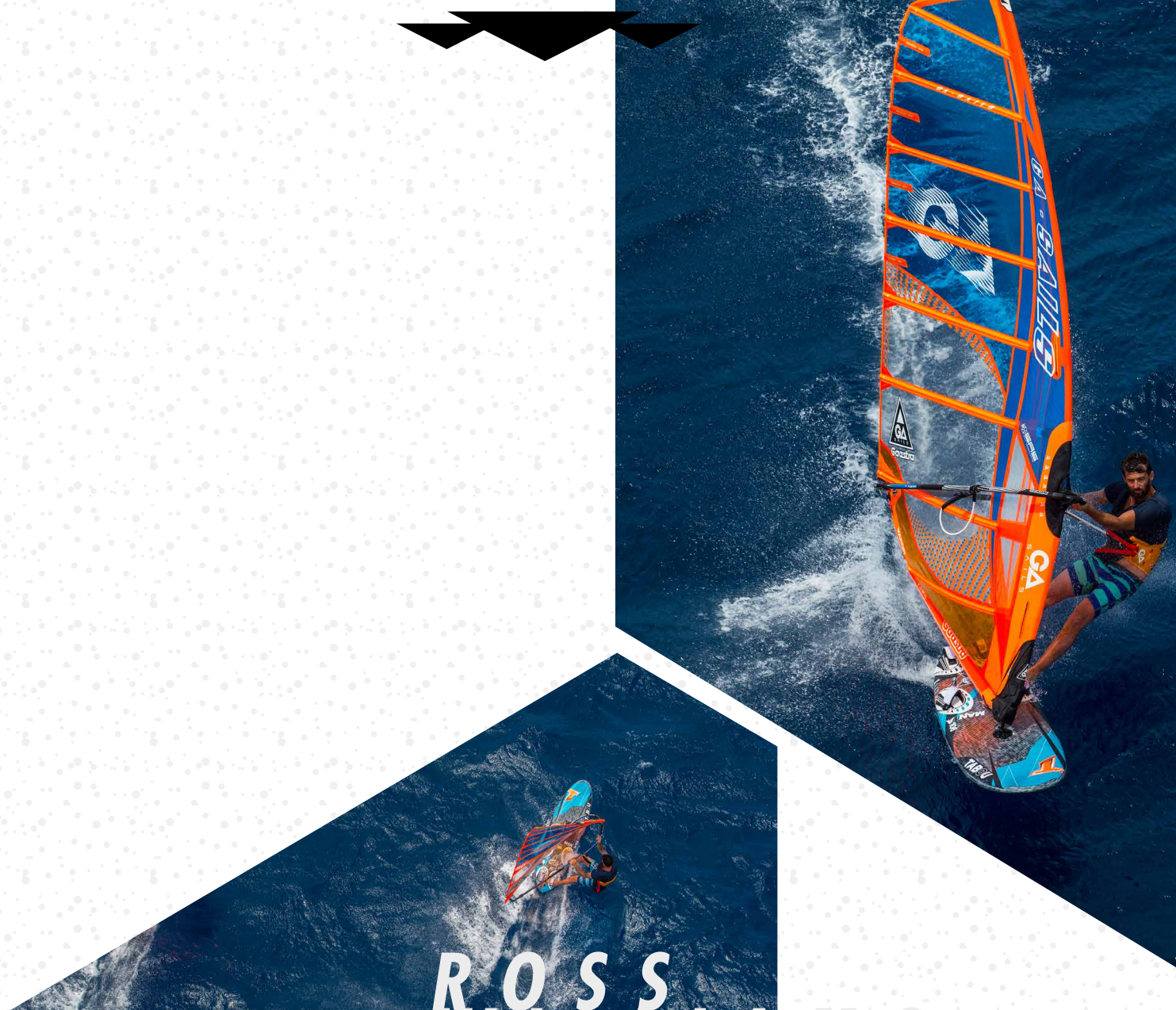
The tail kick in the Twister's rocker allows the tail to sink down quickly before **POPPING** back up, like an ollie on a skateboard, making flat water tricks easier. This POP is increased by the 'super winger pintail,' which provides a lot of surface area under the front foot with as little surface area as possible in the tail. This gives quick planning but with a tail that can be pushed on to POP.

ANTHONY RUENES: „For 2016, we now have a 107L Twister for the super light days. The bigger board has all the pop and spin as the smaller models. Thank you Fabien.“

More speed, more POP and more FUN. Single fin action is in style, and the new Twisters are ready to jump, slide, spin, twist and PLAY.



DOWN



ROSS WILLIAMS MANTA

MANTA 48 speed

WIDTH 48cm

LENGTH 228cm

No Fin included

MANTA 54 speed

WIDTH 54cm

LENGTH 228cm

No Fin included

MANTA 59

WIDTH 59cm

LENGTH 240cm

No Fin included

★ MANTA 61

WIDTH 61.5cm

LENGTH 233cm

No Fin included

MANTA 66 PTE

WIDTH 66cm

LENGTH 233cm

No Fin included

MANTA 71 PTE

WIDTH 71cm

LENGTH 233cm

No Fin included

MANTA 81 PTE

WIDTH 81cm

LENGTH 232cm

No Fin included

MANTA 85 PTE

WIDTH 85cm

LENGTH 232cm

No Fin included

MANTA

PRO RACE



CONSTRUCTION

100% CARBON
P T E

CARBON BIAx SANDWICH



1. TOP SPEED & 100% RACE PERFORMANCE
2. PWA SLALOM PODIUM PERFORMER

MANTA

ABOUT THE BOARD

Development of the Manta range never stops. The team is committed to year round development to ensure the best tools for the job. The Manta range has all the ingredients to put you on the podium; our goal is to go faster, turn better and constantly accelerate. The Manta range is a state of the art racing machine. There is no compromise here; when you step on the Manta, you will feel the power and grace these boards offer.

After successful results on our 2015 Manta boards, we have made changes to the 61 size only:

Our unique tail designs and cuts-out sections give more water release, improve the top speed but more importantly the acceleration when you need to get planing. These boards are jibing amazingly well, whilst the increased board glide allows us to pass other sailors around marks too.

The ultra light and super stiff Team Pro Edition boards are made with the finest materials available to give a serious performance advantage.

Ross Williams

"More range, with better glide and acceleration. For sure, the Mantas will impress our competitors when we land on top of the podium."

Incredible acceleration and jibing characteristics, better high end control and stability. The 2016 Manta is a true demon on all points of the race course.

This year the 61 liter was picked apart. We altered rocker lines and outline to get this board to fit more into the range. Having both bigger and smaller brothers, the 61 has transformed into a race winning, fire breathing weapon that the slalom team are anxious to put to the test this season.

SAIL AND FINS POSSIBILITIES:

- Manta 85 : 233 x 85 x 135 liter -9,5 to 8,6 for a pro use (and you can put 10 to 7,9 depending on your weight) with 48 to 44/42 cm fins
- Manta 81 : 233 x 81 x 129 liter -9,5 to 8,6 for a pro use (and you can put 7,9 for light wind if you are under 80 kilos) with 46 to 42/40 cm fins
- Manta 71 : 233 x 71 x 116 liter -8,6 to 7,1 with 42 to 36 cm fins
- Manta 66 : 233 x 66 x 106 liter -7,9 to 6,4 with 40 to 34 cm fins
- Manta 61 : 240 x 61 x 98 liter -7,1 to 5,6 with 34 to 30 cm fins
- Manta 59 : 240 x 59 x 88 liter -7,1 to 5,0 with 33 to 29 cm fins



Tabou Recommended racing set up for:

XL racer:

- Manta 85, Manta 71, Manta 61

L racer:

- Manta 81, Manta 71, Manta 61

M racer

- Manta 81, Manta 66, Manta 59

S racer

- Manta 71, Manta 66, Manta 59

DOWN THE LINE



★ **SPEEDSTER 65**
LTD/CED
WIDTH 65cm
LENGTH 233cm
FINS Slalom HW 38cm
SAIL 6.0 - 8.4

SPEEDSTER 69
LTD/CED
WIDTH 69cm
LENGTH 233cm
FINS Slalom LW 40cm
SAIL 6.7 - 8.4

SPEEDSTER 75
LTD/CED
WIDTH 75cm
LENGTH 233cm
FINS Slalom LW 44cm
SAIL 7.0 - 9.0

SPEEDSTER 79
LTD/CED
WIDTH 79cm
LENGTH 233cm
FINS Slalom LW 48cm
SAIL 7.6 - 9.3

★ **SPEEDSTER 85**
LTD/CED
WIDTH 85cm
LENGTH 233cm
FINS Slalom LW 52cm
SAIL 7.6 - 10.0

SPEEDSTER 89
LTD/CED
WIDTH 89cm
LENGTH 233cm
FINS Slalom LW 52cm
SAIL 7.8 - 10.0

SPEEDSTER

FREERACE /
RACE

2015



CONSTRUCTION

CARBON BIAX SANDWICH
LTD

PVC FULL SANDWICH



1. FAST ACCELERATION
2. SUPER EASY JIBING
3. EARLY PLANING

SPEEDSTER | MATT PRITCHARD

SPEEDSTER

ABOUT THE BOARD

The SPEEDSTER is World Cup SPEED in an EASY freeride board.

The SPEEDSTER combines the speed of the Manta with the maneuverability of the Rocket. You get it all in one great range of boards! Multiple footstrap locations allow you to custom set up the board for your particular style and water conditions.

Ultra-fast and easy to handle, the Speedster is the perfect board for the recreational sailor who wants to have the highest GPS speed at his local spot without having all the hassle of a slalom or speed board. The SPEEDSTER rides smoothly and jibes easily.

All boards come with T-Lab fins to provide a winning freeride combination. We learned from the Manta, that a wide area under the front footstrap makes the board plane easier and go upwind better. At the tail, the outline becomes suddenly very narrow to increase acceleration and top speed by reducing drag. Think of the super-narrow speed boards.

The cutouts on the tail of the Speedster further reduce drag, increasing the board's top speed. The new rocker is very similar to the Manta except it has a longer flat section to make the board more stable and easy to balance. The deck shape provides comfort and an easy platform to stand on when jibing.



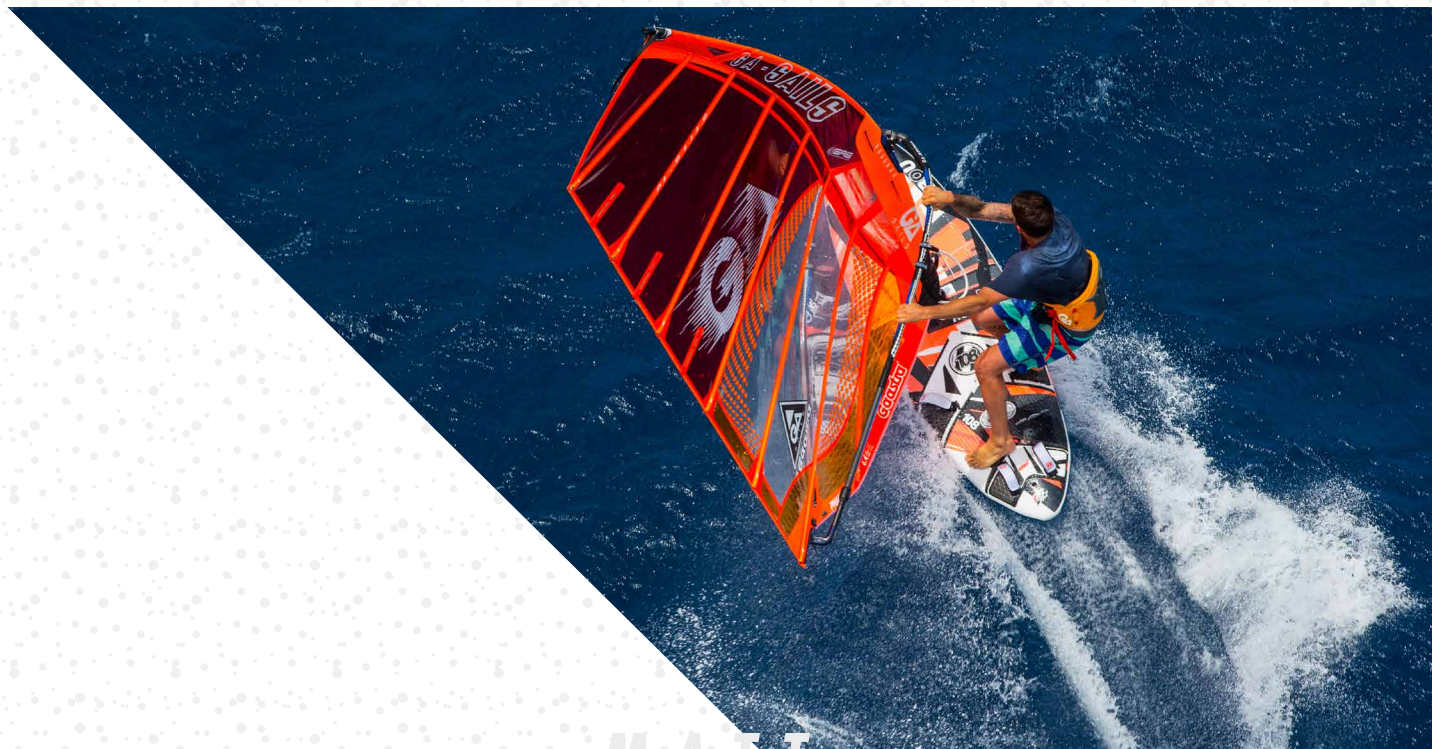
MANTA | ROSS WILLIAMS



Cedric Bordes

"The Speedster makes me smile! I can blast down the beach and pass my friends, jibing like a hero! I find these boards to be the ultimate free ride fun machine."

ROCKET WIDE LTD



MAIT
PRITCHARD ROCKET WIDE LTD



ROSS
WILLIAMS ROCKET WIDE CED

ROCKET WIDE 108
LTD/CED

WIDTH 73cm

LENGTH 240cm

FINS Freeride WL 38cm

SAIL 6.0 - 8.4

ROCKET WIDE 118
LTD/CED

WIDTH 78cm

LENGTH 240cm

FINS Freeride WL 40cm

SAIL 6.7 - 8.4

ROCKET WIDE 128
LTD/CED

WIDTH 84cm

LENGTH 240cm

FINS Freeride WL 46cm

SAIL 7.0 - 9.0

ROCKET WIDE 138
LTD/CED

WIDTH 87cm

LENGTH 240cm

FINS Freeride WL 48cm

SAIL 7.6 - 9.3

FREE RACE /

ROCKET WIDE

FREE RIDE /
FREE RACE



CONSTRUCTION

CARBON BIAX SANDWICH

PVC FULL SANDWICH



1. EASY TO JIBE
2. EARLY PLANING
3. MASSIVE SAIL RANGE

ROCKET WIDE LTD | ROSS WILLIAMS



ROCKET WIDE CED / LTD ABOUT THE BOARD

The Rocket Wide is like the Rocket but wider and a little thinner, which gives 3 main benefits: early planning, quicker acceleration, and the ability to fly through lulls.

What does that mean for a freerider? For one, this board keeps its speed and stays balanced during jibes, which means that you make more jibes and come out of them faster.

Widening the Rocket also lets you ride bigger sails. For example, the 118 Rocket Wide works with a 6.0m Pilot or an 8.5 Phantom freerace. So, if the Rocket Wide becomes your first board, as you improve you will never run out of speed.

Also, for 2016, we have added new insert positions that make sailing easier for non-expert windsurfers.

The Rocket Wide CED and Rocket Wide LTD are for freeriders who want it easy—more stability, more glide. It will carry you from your first planning jibes till your millionth!



ROCKET

F R E E R I D E /
F R E E R A C E

15
6



C O N S T R U C T I O N

CARBON BIAX SANDWICH
L T D

PVC FULL SANDWICH
C E D

1. LOTS OF CONTROL
2. SUPER EASY JIBING
3. EARLY PLANING TO A HIGH TOP SPEED



MATTHEW PRITCHARD ROCKET LTD

ROSS WILLIAMS ROCKET CED



ROCKET 95 LTD/CED

WIDTH 58cm

LENGTH 237cm

FINS Freeride 30cm RTM

SAIL 4.2 - 6.7

ROCKET 105 LTD/CED

WIDTH 63cm

LENGTH 246cm

FINS Freeride 30cm RTM

SAIL 4.5 - 7.0

ROCKET 115 LTD/CED

WIDTH 66cm

LENGTH 242cm

FINS Freeride 30cm RTM

SAIL 4.7 - 7.5

★ ROCKET 125 LTD/CED

WIDTH 72cm

LENGTH 250cm

FINS Freeride 30cm RTM

SAIL 5.5 - 8.5

★ ROCKET 135 LTD/CED

WIDTH 76cm

LENGTH 250cm

FINS Freeride 30cm RTM

SAIL 6.0 - 9.0

ROCKET 145 LTD/CED

WIDTH 76cm

LENGTH 250cm

FINS Freeride 30cm RTM

SAIL 6.0 - 9.8



ROCKET CED / LTD

ABOUT THE BOARD

Updating the Rocket is a scary task. How do we improve a board that consistently wins tests? How do we make better a board that is already a perfect balance of speed, acceleration, maneuverability, and control? After lots of testing and much discussion, we decided to bring in some features of the Rocket Wide to the Rocket 125 and 135. We increased the width in the boards by 3cm to broaden their wind range. We did not change the lengths to keep that easy-to-balance feeling and the smooth transition from non-planing to full speed.

The new Rocket 125 and 135 get going fast more easily while still having a high top speed. The added width makes the boards work with bigger sails and lighter winds, plus more stable for jibes. We also thinned the profile to make the board jibe even easier.

Unchanged is the signature Tabou nose double concave that creates our famous "soft touch" feel as the board cuts through chop.

Fabien:

"We wanted to make sure these new shapes are noticeably better and we have found more magic!" said Fabien.



What's new

Wider center:

- more range
- easy jibe
- more stable

Narrow tail:

- higher top speed

Thinner profile/rail:

- easy entry in jibes

Constant V:

- gliding acceleration

Nose double concave:

- smooth ride through chop





**NOT JUST BETTER
DIFFERENT**

TABOU

SURFBOARDS



QUALITY & COMFORT

DOWN

BULITT

FREERIDE /
FREEMOVE

2016



CONSTRUCTION
AST

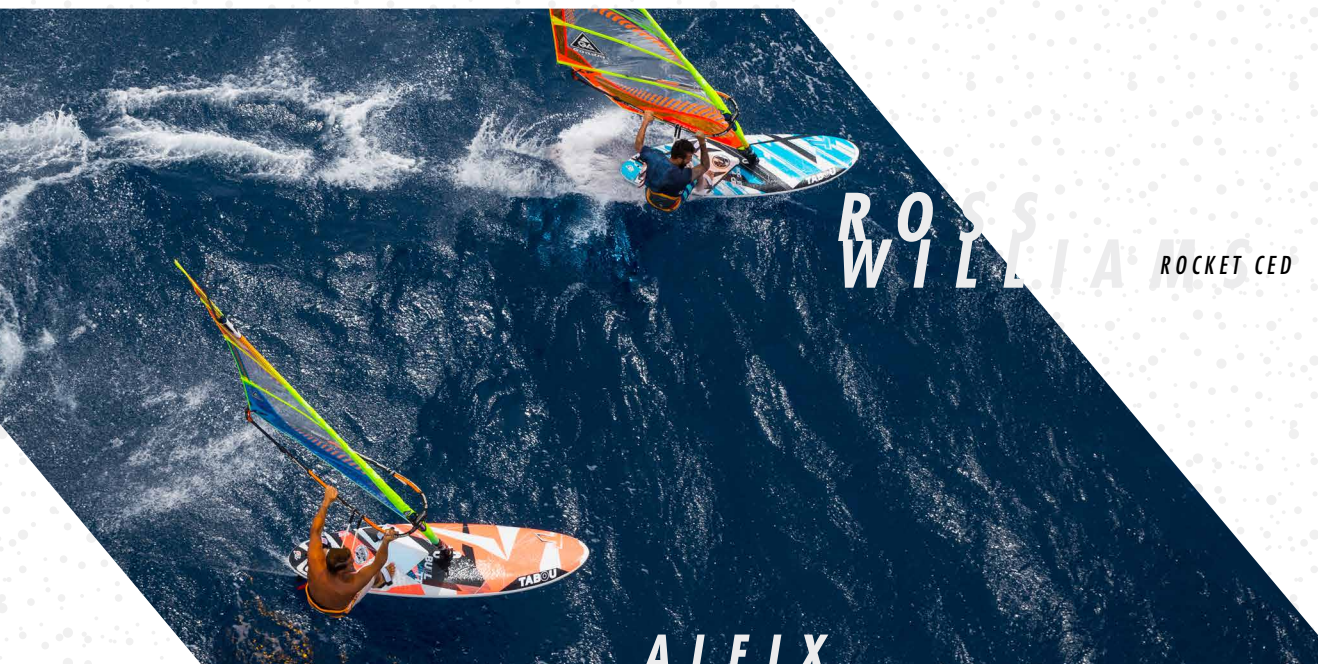
1. EASY TO BALANCE
2. STRONG CONSTRUCTION
3. QUICK PLANING



50

WINDSURFING 2016





BULLITT 125

WIDTH 70cm

LENGTH 258cm

FINS Freeride 44cm WL

SAIL 4.2 - 6.7

BULLITT 135

WIDTH 72cm

LENGTH 258cm

FINS Freeride 46cm WL

SAIL 4.5 - 7.0

BULLITT 145

WIDTH 76cm

LENGTH 258cm

FINS Freeride 48cm WL

SAIL 4.7 - 7.5

BULLITT 155

WIDTH 76cm

LENGTH 266cm

FINS Freeride 50cm WL

SAIL 5.5 - 8.5

BULLITT / ALEX SANLEHY GONZALEZ

BULLITT

ABOUT THE BOARD

The Bullitt gets you on the water without breaking your budget, and the foam deck keeps your feet comfy.

We took everything great about the Rocket Wide (smooth speed, easy jibing) and adapted those features to work with a less expensive construction. Then we added a bit of width to make the boards easier for balancing and uphauling. Even though it costs less, the Bullitt's AST construction allows the board to be resistant against the small dings that come from dropping a board or banging it against rocks.

Designed to be both durable and affordable, the Bullitt is perfect for students or as the extra board to keep in the attic in case you friend wants to get back into windsurfing.

Davy Scheffers comments

"A lot of my student friends can afford this board and enjoy their day on the water, improving their level on it everyday and racing guys with much more expensive gear."

A strong freeride board for the budget windsurfer.

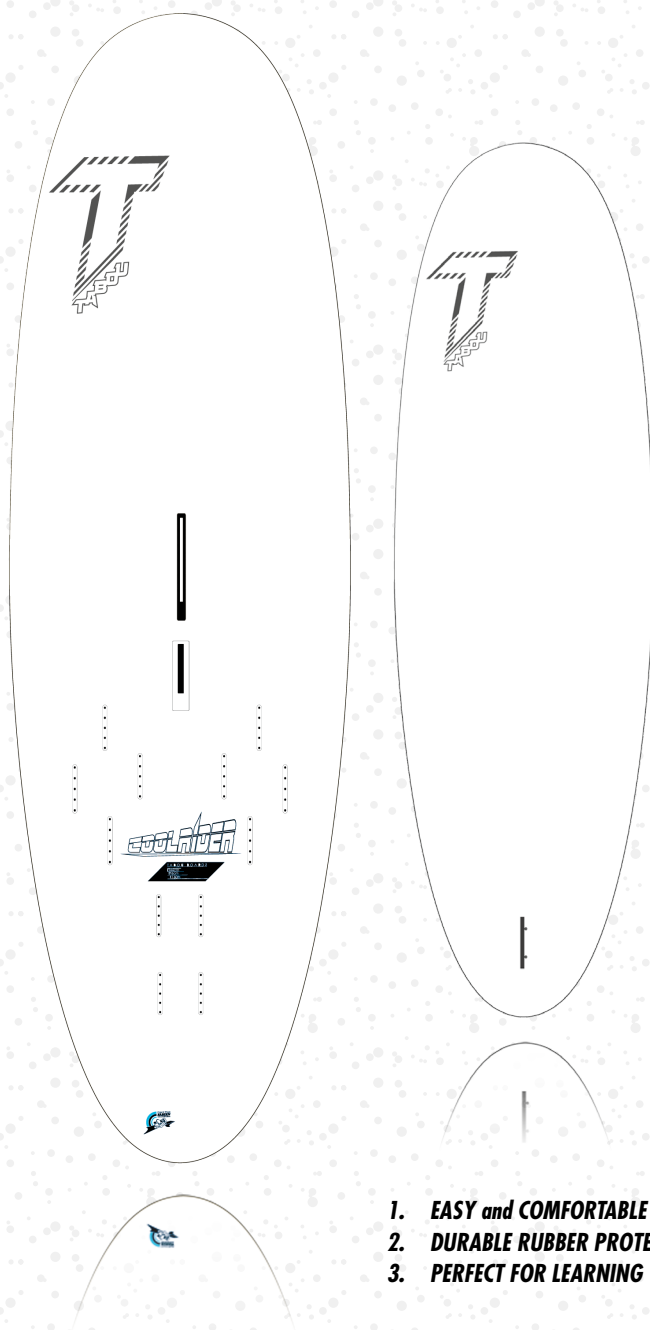




COOLRIDER

LEARN

70
16



ABOUT THE BOARD

Learn the best sport in the world: windsurfing!

The Coolrider is the perfect first-time board. And second, and third, and fourth. ... Even though the Coolrider is a learner board, it also works as a timeless fun board for lightwind days. Looking for a freestyle longboard? The Coolrider is right for you.

Inspired by feedback from windsurfing schools all over the world, the Coolrider's soft, wide EVA deck makes windsurfing easy. A handle on the nose makes the board easy to carry on the beach. And rubber protects the board from rocks and drops.

The Coolrider's design works so that even though the board is very big, the rails stay relatively small to keep control. The biggest Coolrider board, the 230, features a double deck in the tail to make a stable ride more maneuverable.

For the signature Tabou freeride feel, the Coolrider has deep front V and a flat rocker. The dagger board makes going upwind easy.

Take the family out for windsurfing. The Coolrider means fun on a windy summer day.

CONSTRUCTION AST

1. **EASY and COMFORTABLE**
2. **DURABLE RUBBER PROTECTION**
3. **PERFECT FOR LEARNING**

COOLRIDER 160

WIDTH 76cm

LENGTH 266cm

FINS B&M 52 | Slalom 340 FR 34 plastic

SAIL 1.0 -9.0

COOLRIDER 190

WIDTH 80cm

LENGTH 280cm

FINS B&M 52 | Slalom 340 FR 34 plastic

SAIL 1.0 -9.0

COOLRIDER 230

WIDTH 100cm

LENGTH 280cm

FINS B&M 52 | Slalom 340 FR 34 plastic

SAIL 1.0 -9.0

WAVE & FREERIDE

ROOKIE

WAVE & FREERIDE

2016

ABOUT THE BOARDS

Kids want to rip. The Rookie is a shrunk down Da Curve. Of course, we had to make some changes to the shape so that it would work perfectly in such a small size. For example, we straightened the rocker to make it faster and easier to ride. And, we changed the stance to better fit a young person's legs.

The Rookie will help any windsurfing kid get better fast. With a PVC full sandwich construction, the Rookie is light enough to rip like a pro board and can also survive the flat landings that come from a day of training loops.

2014 WORLD CHAMPION Thomas Traversa comments:

"If I had a board like this when I was growing up, I would have been world champion ten years ago!"



1. High performance for kids
2. pro level PVC sandwich construction
3. fast and easy

CONSTRUCTION

PVC FULL SANDWICH CK



CONSTRUCTION

AST

ROOKIE WAVE

WIDTH 53cm

LENGTH 225cm

FINS 2xZinger 7 + 2xZinger12

SAIL 2.0 - 5.0

ROOKIE FR

WIDTH 61cm

LENGTH 239m

FINS X-RIDE 25.5l Power Base plastic / Slalom 340

SAIL 1.0 - 6.6
55

ROOKIE FR LARGE

WIDTH 66cm

LENGTH 239cm

FINS X-RIDE 25.5l Power Base plastic / Slalom 340

SAIL 1.0 - 7.0



SPECS



DA CURVE QUADSTER

| MODEL | VOL (l tr) | LENGTH (cm) | WIDTH (cm) | WEIGHT* (kg) | BOX | FIN (T - LAB) | SAIL RANGE (m ²) |
|------------------------|---------------|----------------|---------------|-----------------|---------|-----------------------------|---------------------------------|
| ★ Da Curve 75 Quadster | 75 | 226 | 55 | 6.4 | Slotbox | 2x Carver 10 1x Zinger 15 | 3.5 - 5.2 |
| ★ Da Curve 80 Quadster | 80 | 228 | 56.5 | 6.7 | Slotbox | 2x Carver 10 1x Zinger 16 | 3.7 - 5.7 |
| ★ Da Curve 86 Quadster | 86 | 230 | 57.5 | 6.8 | Slotbox | 2x Carver 11 1x Zinger 17 | 4.2 - 6.1 |
| Da Curve 96Quadster | 96 | 230 | 59 | 7.1 | Slotbox | 2x Carver 11 1x Zinger 18 | 4.5 - 6.2 |

* Estimated Weights. Weights are given (+) plus or (-) minus 10%. This makes allowance for possible pre-production differences.

| MODEL | VOL (l tr) | LENGTH (cm) | WIDTH (cm) | WEIGHT* (kg) | BOX | FIN (T - LAB) | SAIL RANGE (m ²) |
|-----------------|---------------|----------------|---------------|-----------------|------------|---------------------|---------------------------------|
| Pocket Wave 69 | 69 | 224 | 56 | 6.3 | 3x Slotbox | Zinger 2x 9 + 1x 15 | 3.0 - 5.0 |
| Pocket Wave 78 | 78 | 228 | 58 | 6.6 | 3x Slotbox | Zinger 2x10 + 1x 16 | 3.5 - 5.2 |
| Pocket Wave 86 | 86 | 229 | 59.5 | 6.8 | 3x Slotbox | Zinger 2x11 + 1x 17 | 3.7 - 5.7 |
| Pocket Wave 94 | 94 | 233 | 61 | 6.9 | 3x Slotbox | Zinger 2x11 + 1x 18 | 4.2 - 6.1 |
| Pocket Wave 102 | 102 | 236 | 61 | 7.1 | 3x Slotbox | Zinger 2x11 + 1x 18 | 4.5 - 6.4 |

* Estimated Weights. Weights are given (+) plus or (-) minus 10%. This makes allowance for possible pre-production differences.



3S CED / LTD

| MODEL | VOL (l tr) | LENGTH (cm) | WIDTH (cm) | WEIGHT* (kg) | BOX | FIN (T - LAB) | SAIL RANGE (m ²) |
|-------------------|---------------|----------------|---------------|-----------------|-----------|------------------|---------------------------------|
| 3S 76 LTD / CED | 76 | 232 | 57 | 5.8 / 6.3 | US | 1x X Ride 23 | 3.3 - 5.7 |
| ★ 3S 86 LTD / CED | 86 | 230 | 59.5 | 6.3 / 6.6 | Power Box | 1x X Ride 25.5 | 3.7 - 6.1 |
| 3S 96 LTD / CED | 96 | 239 | 61 | 6.5 / 6.8 | Power Box | 1x FR 28 | 4.2 - 6.6 |
| 3S 106 LTD / CED | 106 | 240 | 64.5 | 6.7 / 7.0 | Power Box | 1x FR 32 | 4.5 - 7.0 |
| 3S 116 LTD / CED | 116 | 242 | 66 | 7.1 / 7.4 | Power Box | 1x FR 34 | 4.7 - 7.4 |

* Estimated Weights. Weights are given (+) plus or (-) minus 10%. This makes allowance for possible pre-production differences.



| MODEL | VOL (l tr) | LENGTH (cm) | WIDTH (cm) | WEIGHT* (kg) | BOX | FIN (T - LAB) | SAIL RANGE (m ²) |
|--------------------|---------------|----------------|---------------|-----------------|---------|-------------------|---------------------------------|
| Twister 80 Team | 80 | 230 | 59 | 5.9 | Slotbox | 1 x Sashimi II 17 | 4.0 - 6.0 |
| Twister 90 Team | 90 | 228 | 61 | 6.2 | Slotbox | 1 x Sashimi II 18 | 4.5 - 6.5 |
| Twister 100 Team | 100 | 228 | 64 | 6.3 | Slotbox | 1 x Sashimi II 19 | 4.5 - 7.4 |
| ★ Twister 107 Team | 107 | 228 | 64.5 | 6.4 | Slotbox | 1 x Sashimi II 19 | 4.5 - 7.8 |

TWISTER





MANTA

| MODEL | VOL (ltr) | LENGTH (cm) | WIDTH (cm) | WEIGHT* (kg) | BOX | REC. FIN SIZE ** | SAIL RANGE (m ²) |
|-----------------|--------------|----------------|---------------|-----------------|--------------|---------------------|---------------------------------|
| Manta 48 | 64 | 228 | 48 | TBA | Tuttle short | TBA | TBA |
| Manta 54 | 75 | 228 | 54 | TBA | Tuttle short | 29 - 33 | TBA |
| Manta 59 | 88 | 240 | 59 | TBA | Tuttle short | 29 - 33 | 7.1 - 5.0 |
| ★ Manta 61 | 98 | 233 | 61.5 | TBA | Tuttle short | 30 - 34 | 7.1 - 5.6 |
| Manta 66 & Team | 106 | 233 | 66 | TBA | Tuttle short | 34 - 40 | 7.9 - 6.4 |
| Manta 71 & Team | 116 | 233 | 71 | TBA | Tuttle short | 36 - 42 | 8.6 - 6.4 |
| Manta 81 & Team | 128 | 232 | 81 | TBA | Tuttle long | 40 - 46 | 9.5 - 8.6 |
| Manta 85 & Team | 135 | 232 | 85 | TBA | Tuttle long | 42 - 48 | 9.5 - 8.6 |

* Estimated Weights. Weights are given (+) plus or (-) minus 10%. This makes allowance for possible pre-production differences.

** No fin delivered with this board!

MODEL

- ★ Speedster 65 LTD & CED
- Speedster 69 LTD & CED
- Speedster 75 LTD & CED
- Speedster 79 LTD & CED
- ★ Speedster 85 LTD & CED
- Speedster 89 LTD & CED

| MODEL | VOL (ltr) | LENGTH (cm) | WIDTH (cm) | WEIGHT* (kg) | BOX | FIN | SAIL RANGE |
|--------------------------|--------------|----------------|---------------|-----------------|--------------|-----------------|------------|
| ★ Speedster 65 LTD & CED | 100 | 233 | 65 | 6.6 / 7.5 | Tuttle Short | 1x Slalom HW 38 | 6.0 - 8.4 |
| Speedster 69 LTD & CED | 108 | 233 | 69 | 7.0 / 7.7 | Tuttle Short | 1x Slalom LW 40 | 6.7 - 8.4 |
| Speedster 75 LTD & CED | 118 | 233 | 75 | 7.4 / 8.1 | Tuttle Short | 1x Slalom LW 44 | 7.0 - 9.0 |
| Speedster 79 LTD & CED | 128 | 233 | 79 | 7.7 / 8.5 | Tuttle Short | 1x Slalom LW 48 | 7.6 - 9.3 |
| ★ Speedster 85 LTD & CED | 138 | 233 | 85 | 8.1 / 8.9 | Tuttle Long | 1x Slalom LW 52 | 7.6 - 10.0 |
| Speedster 89 LTD & CED | 148 | 233 | 89 | 8.5 / 9.2 | Tuttle Long | 1x Slalom LW 52 | 7.8 - 10.0 |



ROCKET WIDE CED / LTD

| MODEL | VOL (ltr) | LENGTH (cm) | WIDTH (cm) | WEIGHT* (kg) | BOX | FIN | SAIL RANGE (m ²) |
|---------------------------|--------------|----------------|---------------|-----------------|-----------|----------------------------|---------------------------------|
| Rocket Wide 108 LTD & CED | 108 | 240 | 73 | 7.0 / 7.8 | Power Box | 1x FR 38 RTM / 1x FR 38 WL | 6.0 - 8.0 |
| Rocket Wide 118 LTD & CED | 118 | 240 | 78 | 7.5 / 8.2 | Power Box | 1x FR 40 RTM / 1x FR 38 WL | 6.5 - 8.5 |
| Rocket Wide 128 LTD & CED | 128 | 240 | 84 | 7.8 / 8.9 | Power Box | 1x FR 46 RTM / 1x FR 44 WL | 7.0 - 9.5 |
| Rocket Wide 138 LTD & CED | 138 | 240 | 87 | 7.9 / 8.8 | Power Box | 1x FR 48 RTM / 1x FR 48 WL | 7.0 - 9.5 |

MODEL

- Rocket 95 LTD & CED
- Rocket 105 LTD & CED
- Rocket 115 LTD & CED
- ★ Rocket 125 LTD & CED
- ★ Rocket 135 LTD & CED
- Rocket 145 LTD & CED

| MODEL | VOL (ltr) | LENGTH (cm) | WIDTH (cm) | WEIGHT* (kg) | BOX | FIN | SAIL RANGE (m ²) |
|------------------------|--------------|----------------|---------------|-----------------|-----------|--------------------|---------------------------------|
| Rocket 95 LTD & CED | 95 | 237 | 58 | 6.0 / 6.7 | Power Box | 1x FR 30 RTM/30 WL | 4.2 - 6.7 |
| Rocket 105 LTD & CED | 105 | 246 | 63 | 6.5 / 7.3 | Power Box | 1x FR 34 RTM/34 WL | 4.5 - 7.0 |
| Rocket 115 LTD & CED | 115 | 242 | 66 | 6.9 / 7.7 | Power Box | 1x FR 38 RTM/38 WL | 4.7 - 7.5 |
| ★ Rocket 125 LTD & CED | 125 | 250 | 72 | 7.1 / 7.9 | Power Box | 1x FR 44 RTM/40 WL | 5.5 - 8.5 |
| ★ Rocket 135 LTD & CED | 135 | 250 | 76 | 7.5 / 8.4 | Power Box | 1x FR 46 RTM/44 WL | 6.0 - 8.5 |
| Rocket 145 LTD & CED | 145 | 250 | 76 | 7.6 / 8.5 | Power Box | 1x FR 46 RTM/48 WL | 6.0 - 8.5 |



ROCKET CED / LTD



BULLITT

| MODEL | VOL (ltr) | LENGTH (cm) | WIDTH (cm) | WEIGHT* (kg) | BOX | FIN | SAIL RANGE (m ²) |
|------------|--------------|----------------|---------------|-----------------|-----------|-------------|---------------------------------|
| Rocket 125 | 125 | 258 | 70 | 8.9 | Power Box | 1x FR 44 WL | 5.5 - 8.0 |
| Rocket 135 | 135 | 258 | 72 | 9.3 | Power Box | 1x FR 46 WL | 6.0 - 8.5 |
| Rocket 145 | 145 | 258 | 76 | 9.9 | Power Box | 1x FR 48 WL | 6.0 - 9.8 |
| Rocket 155 | 155 | 266 | 76 | 10.2 | Power Box | 1x FR 50 WL | 6.0 - 10.0 |

| MODEL | VOL (ltr) | LENGTH (cm) | WIDTH (cm) | WEIGHT* (kg) | BOX | FIN | SAIL RANGE (m ²) |
|---------------|--------------|----------------|---------------|-----------------|-----------|-------------------------------------|---------------------------------|
| Coolrider 160 | 160 | 266 | 76 | 13.7 | Power Box | B&M 52 + Slalom 340 (FR 34 plastic) | 1.0 - 9.0 |
| Coolrider 190 | 190 | 280 | 80 | 14.0 | Power Box | B&M 62 + Slalom 340 (FR 34 plastic) | 1.0 - 9.0 |
| Coolrider 230 | 230 | 280 | 100 | 16 | Power Box | B&M 62 + Slalom 340 (FR 34 plastic) | 1.0 - 9.0 |

* Estimated Weights. Weights are given (+) plus or (-) minus 10%. This makes allowance for possible pre-production differences.

COOLRIDER



ROOKIE

| MODEL | VOL (ltr) | LENGTH (cm) | WIDTH (cm) | WEIGHT* (kg) | BOX | FIN | SAIL RANGE |
|-------------------|--------------|----------------|---------------|-----------------|-------------|-----------------------|------------|
| Rookie Wave | 61 | 225 | 53 | 6.1 | 4 x SLOTBOX | Zinger 2 x 7 + 2 x 12 | 2.0 - 5.0 |
| Rookie Freeride | 96 | 239 | 61 | 7.1 | POWER BOX | X-Ride 25.5 | 1.0 - 6.6 |
| Rookie Freeride L | 116 | 239 | 66 | 7.3 | POWER BOX | X-Ride 25.5 | 1.0 - 7.0 |



**NOT JUST BETTER
DIFFERENT**

QUALITY & COMFORT

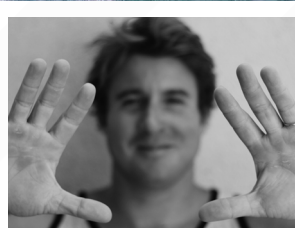
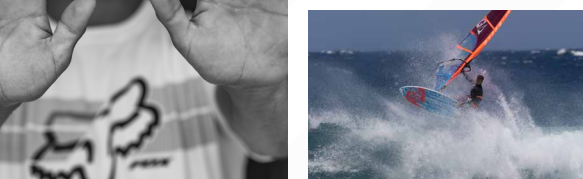


FOLLOW US ON
INSTAGRAM, YOUTUBE, VIMEO AND FOLLOW US ON FACEBOOK TO BE UP TO DATE AND GET THE LATEST INFORMATION ... AND EVEN MORE INFORMATION ON OUR WEBPAGES

TABOU-BOARDS.COM



**NOT JUST BETTER
DIFFERENT**



New Sports GmbH
Gaaster, Tabou & Vandal
Alfred- Nobel- Str. 2-14
50226 Frechen / Germany

tel: +49 (0) 2234 93 34 0 0
fax: +49 (0) 2234 93 34 0 16

Photography: John Carter
Design: Foxx, Axel Weckermann
Special thanks to: Ross Williams, Jamie Hancock, Thomas Traversa, Matt Prithard, Aleix Sanllehy Gonzalez, Graham Ezzy and Cedric Bordes
Tabou reserves the right to improve / modify / change any product at anytime!